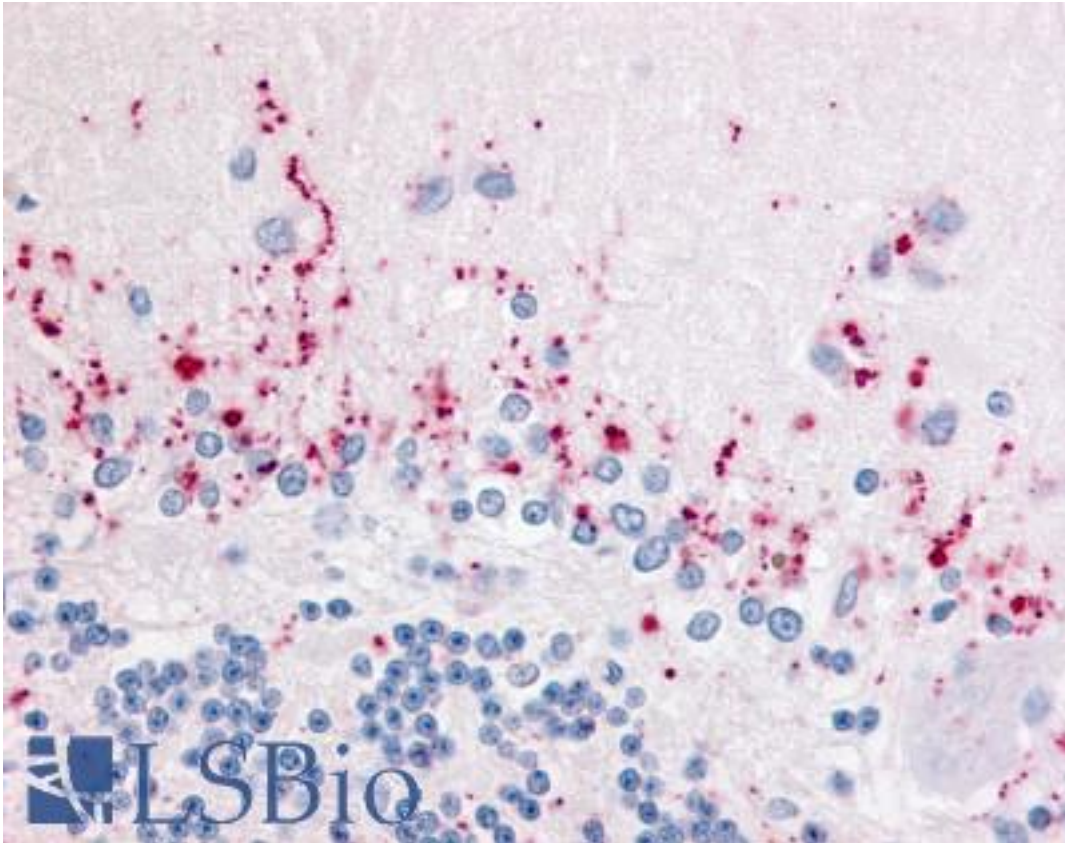


WNT2B Rabbit anti-Human Polyclonal (Internal) Antibody - LS-A8572 - LSBio	
CatalogID:	LS-A8572
Target:	wingless-type MMTV integration site family, member 2B (WNT2B)
Synonyms:	WNT2B Antibody, Protein Wnt-2b Antibody, XWNT2 Antibody, Protein Wnt-13 Antibody, WNT13 Antibody, XWNT2, Xenopus, homolog of Antibody
Family / Subfamily:	WNT / not assigned-WNT
Host	WNT2B antibody was produced in Rabbit
Clonality:	Polyclonal
Immunogen Species:	WNT2B antibody was raised against Human
Antigen Type:	Synthetic peptide
Immunogen:	WNT2B antibody was raised against synthetic 16 amino acid peptide from internal region of human WNT2B. Percent identity with other species by BLAST analysis: Human, Gorilla, Gibbon, Monkey, Marmoset, Mouse, Rat, Bovine, Dog, Bat, Hamster, Panda, Horse, Rabbit, Pig (100%); Elephant (94%); Opossum, Platypus (88%).
Specificity:	Human WNT2B. BLAST analysis of the peptide immunogen showed no homology with other human proteins, except GALNT6 (56%).
Epitope:	Internal
Reactivity:	Human, Gorilla, Gibbon, Monkey, Mouse, Rat, Bat, Bovine, Dog, Hamster, Horse, Pig, Rabbit
Purification:	Immunoaffinity purified
Presentation:	PBS, 0.1% sodium azide.
Recommended Storage:	Long term: -70°C; Short term: +4°C
Usage Summary:	Immunohistochemistry: LS-A8572 was validated for use in immunohistochemistry on a panel of 21 formalin-fixed, paraffin-embedded (FFPE) human tissues after heat induced antigen retrieval in pH 6.0 citrate buffer. After incubation with the primary antibody, slides were incubated with biotinylated secondary antibody, followed by alkaline phosphatase-streptavidin and chromogen. The stained slides were evaluated by a pathologist to confirm staining specificity. The optimal working concentration for LS-A8572 was determined to be 5 ug/ml.
Uses:	IHC - Paraffin (5 µg/ml) (Optimal dilution to be determined by the researcher)
Size:	50 µg
Concentration:	1 mg/ml

Immunohistochemistry Image:



Anti-WNT2B antibody LS-A8572 IHC of human brain, cerebellum. Immunohistochemistry of formalin-fixed, paraffin-embedded tissue after heat-induced antigen retrieval.

Requested From:

Japan

Laboratory Reagent For In Vitro Research Use Only

Not for resale without prior written consent from LifeSpan BioSciences, Inc.

Created on 9/23/2014

© 2014 LifeSpan BioSciences