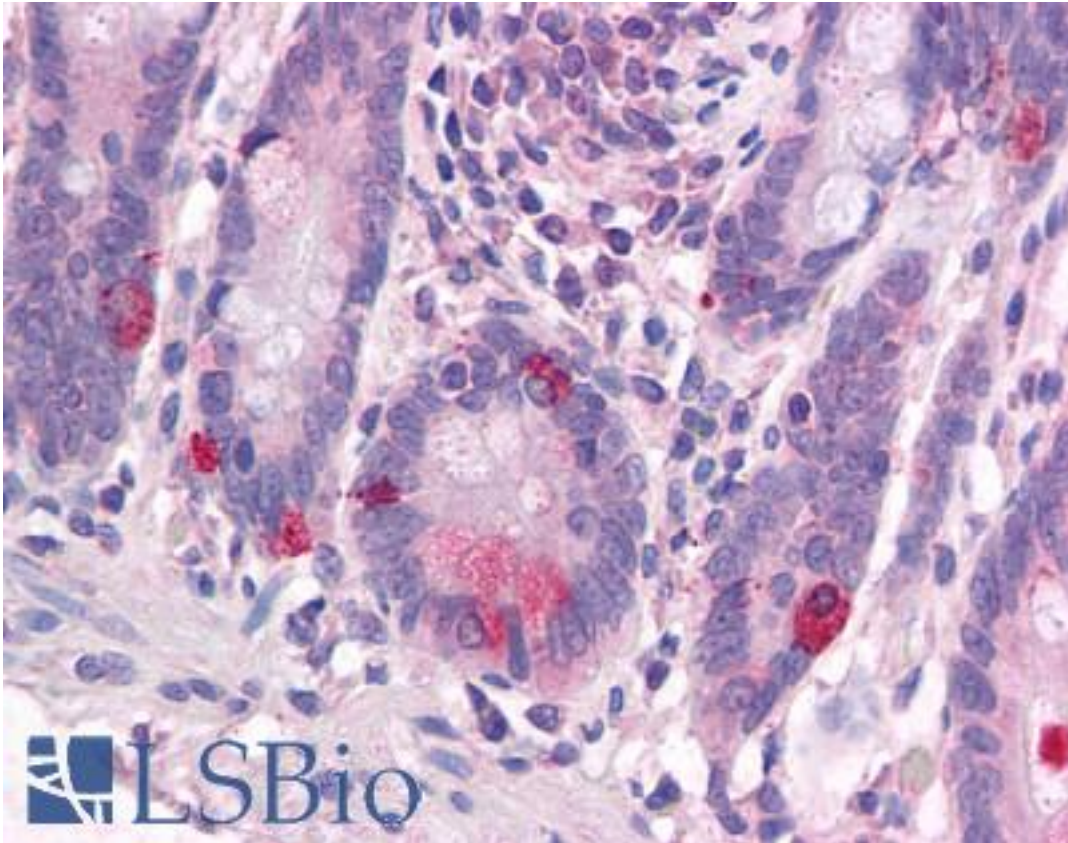


WNT1 Rabbit anti-Human Polyclonal (Internal) Antibody - LS-A8568 - LSBio

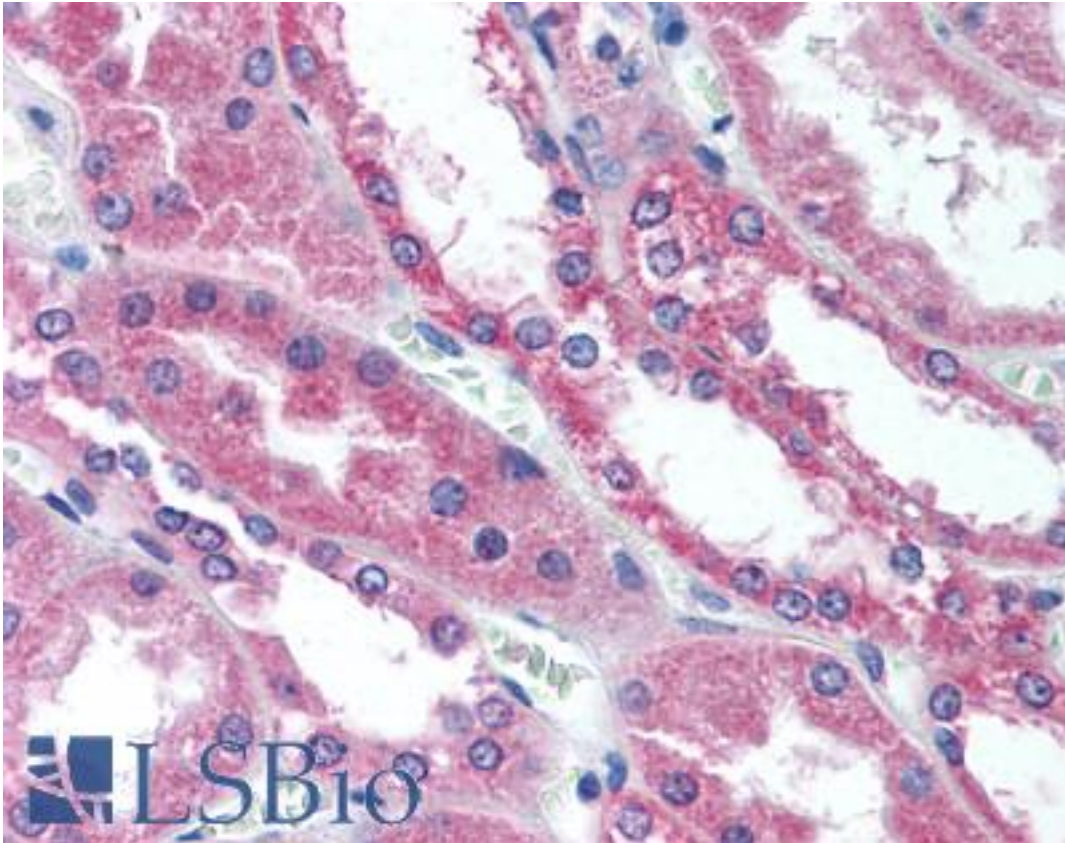
CatalogID:	LS-A8568
Target:	wingless-type MMTV integration site family, member 1 (WNT1)
Synonyms:	WNT1 Antibody, INT1 Antibody, Proto-oncogene Int-1 homolog Antibody, Proto-oncogene Wnt-1 Antibody
Family / Subfamily:	WNT / not assigned-WNT
Host	WNT1 antibody was produced in Rabbit
Clonality:	Polyclonal
Immunogen Species:	WNT1 antibody was raised against Human
Antigen Type:	Synthetic peptide
Immunogen:	WNT1 antibody was raised against synthetic 19 amino acid peptide from internal region of human WNT1. Percent identity with other species by BLAST analysis: Human, Gorilla, Gibbon, Monkey, Mouse, Rat, Elephant, Panda, Bovine, Horse, Rabbit, Pig (100%); Marmoset, Hamster, Chicken, Lizard (95%); Stickleback (84%).
Specificity:	Human WNT1. BLAST analysis of the peptide immunogen showed no homology with other human proteins.
Epitope:	Internal
Reactivity:	Human, Gorilla, Gibbon, Mouse, Rat, Bovine, Horse, Pig, Rabbit
Predicted Reactivity:	Monkey, Hamster, Chicken
Purification:	Immunoaffinity purified
Presentation:	PBS, 0.1% sodium azide.
Recommended Storage:	Long term: -70°C; Short term: +4°C
Uses:	IHC - Paraffin (10 - 15 µg/ml) (Optimal dilution to be determined by the researcher)
Size:	50 µg
Concentration:	1 mg/ml

Immunohistochemistry Image:



Anti-WNT1 antibody LS-A8568 IHC of human small intestine. Immunohistochemistry of formalin-fixed, paraffin-embedded tissue after heat-induced antigen retrieval.

Immunohistochemistry Image:



Anti-WNT1 antibody LS-A8568 IHC of human kidney. Immunohistochemistry of formalin-fixed, paraffin-embedded tissue after heat-induced antigen retrieval.

Requested From:

Japan

Laboratory Reagent For In Vitro Research Use Only

Not for resale without prior written consent from LifeSpan BioSciences, Inc.

Created on 9/23/2014

© 2014 LifeSpan BioSciences