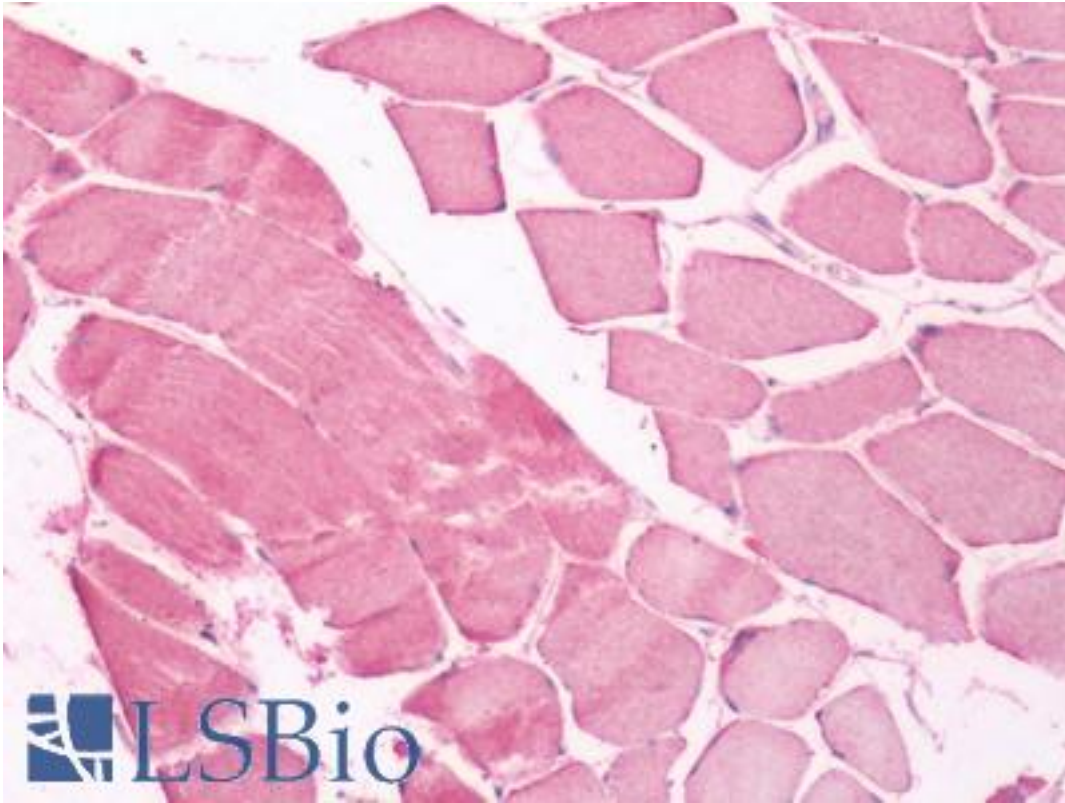


UCLH3 Rabbit anti-Human Polyclonal (Internal) Antibody - LS-A8557 - LSBio	
CatalogID:	LS-A8557
Target:	ubiquitin carboxyl-terminal esterase L3 (ubiquitin thiolesterase) (UCLH3)
Synonyms:	UCLH3 Antibody, Ubiquitin thiolesterase Antibody, Ubiquitin thioesterase L3 Antibody, UCH-L3 Antibody
Family / Subfamily:	Protease / Cysteine C12
Host	UCLH3 antibody was produced in Rabbit
Clonality:	Polyclonal
Immunogen Species:	UCLH3 antibody was raised against Human
Antigen Type:	Synthetic peptide
Immunogen:	UCLH3 antibody was raised against synthetic 18 amino acid peptide from internal region of human UCLH3. Percent identity with other species by BLAST analysis: Human, Gorilla, Gibbon, Mouse, Rat, Dog, Elephant, Opossum, Turkey, Chicken, Lizard (100%); Orangutan, Monkey, Bovine, Horse, Rabbit, Pig, Salmon (94%); Pufferfish, Zebrafish, Stickleback, Water flea (89%); Xenopus (83%).
Specificity:	Human UCLH3. BLAST analysis of the peptide immunogen showed no homology with other human proteins.
Epitope:	Internal
Reactivity:	Human, Gorilla, Gibbon, Mouse, Rat, Dog, Chicken
Predicted Reactivity:	Orangutan, Monkey, Bovine, Horse, Pig, Rabbit
Purification:	Immunoaffinity purified
Presentation:	PBS, 0.1% sodium azide.
Recommended Storage:	Long term: -70°C; Short term: +4°C
Usage Summary:	Immunohistochemistry: LS-A8557 was validated for use in immunohistochemistry on a panel of 21 formalin-fixed, paraffin-embedded (FFPE) human tissues after heat induced antigen retrieval in pH 6.0 citrate buffer. After incubation with the primary antibody, slides were incubated with biotinylated secondary antibody, followed by alkaline phosphatase-streptavidin and chromogen. The stained slides were evaluated by a pathologist to confirm staining specificity. The optimal working concentration for LS-A8557 was determined to be 10 ug/ml.
Uses:	IHC - Paraffin (5 - 10 µg/ml) (Optimal dilution to be determined by the researcher)
Size:	50 µg
Concentration:	1 mg/ml

Immunohistochemistry Image:



Human Skeletal Muscle: Formalin-Fixed, Paraffin-Embedded (FFPE)

Requested From:

Japan

Laboratory Reagent For In Vitro Research Use Only

Not for resale without prior written consent from LifeSpan BioSciences, Inc.

Created on 9/23/2014

© 2014 LifeSpan BioSciences