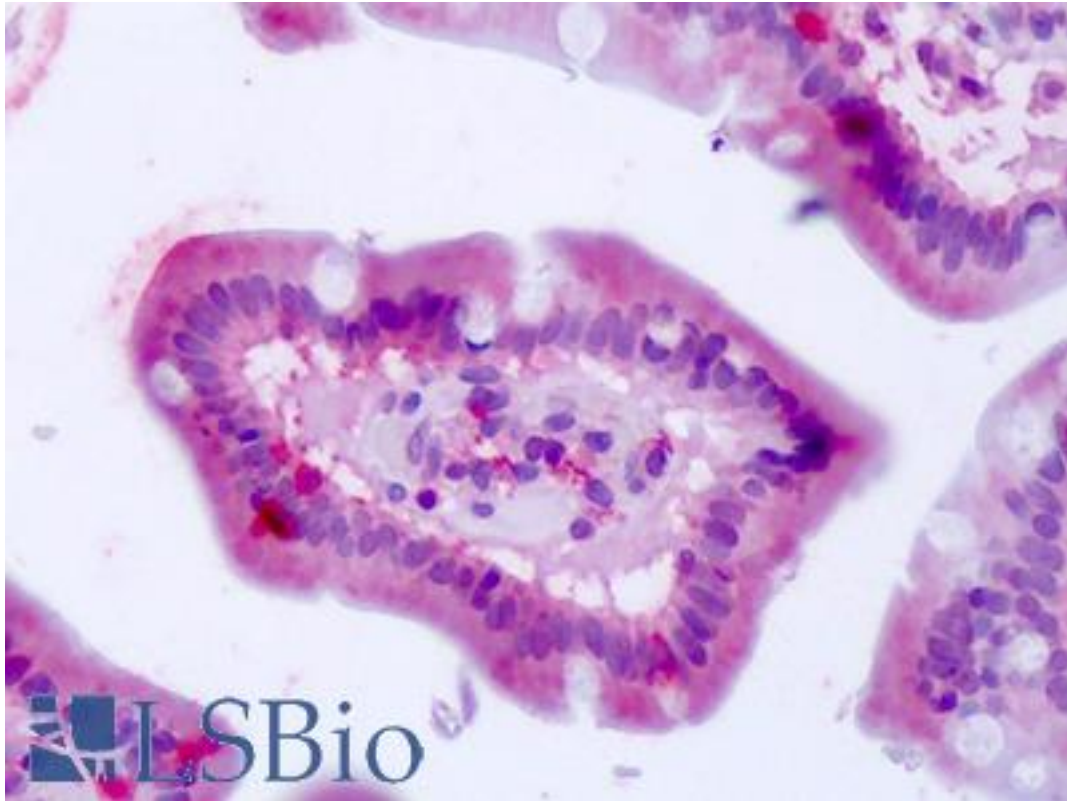


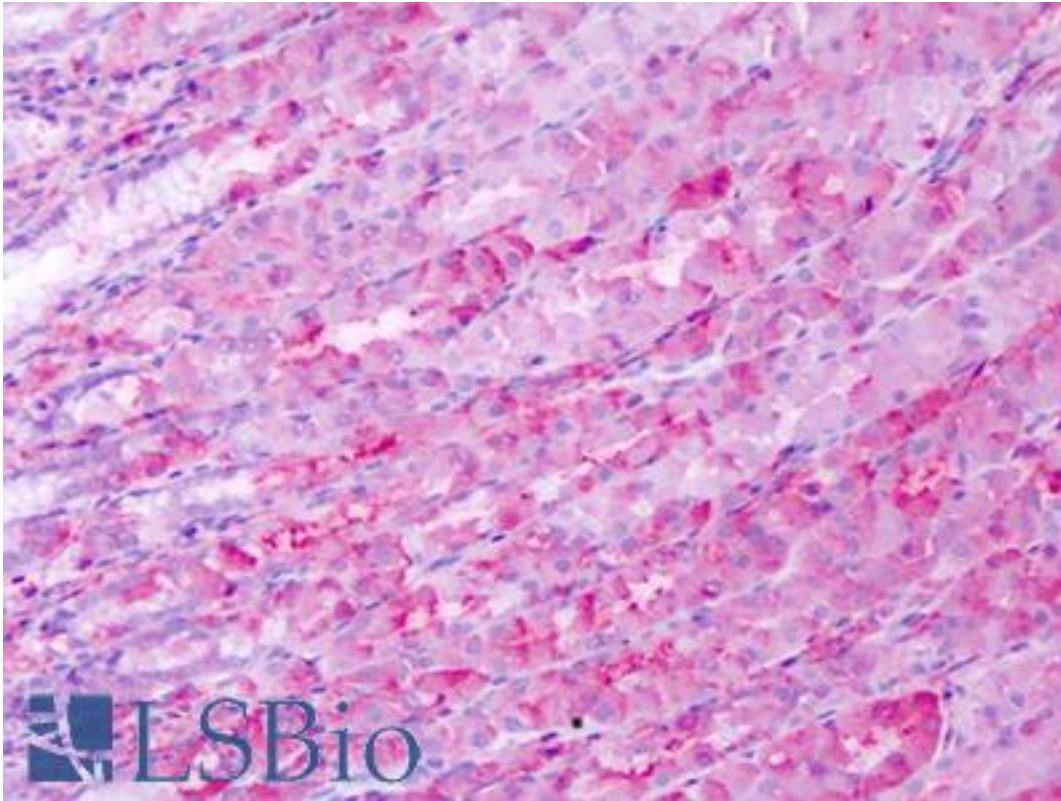
BEST4 Rabbit anti-Human Polyclonal (Internal) Antibody - LS-A8523 - LSBio	
<b>CatalogID:</b>	LS-A8523
<b>Target:</b>	bestrophin 4 (BEST4)
<b>Synonyms:</b>	BEST4 Antibody, Bestrophin-4 Antibody, Bestrophin 4 Antibody, VMD2L2 Antibody
<b>Family / Subfamily:</b>	Ion channel / Bestrophin
<b>Host</b>	BEST4 antibody was produced in Rabbit
<b>Clonality:</b>	Polyclonal
<b>Immunogen Species:</b>	BEST4 antibody was raised against Human
<b>Antigen Type:</b>	Synthetic peptide
<b>Immunogen:</b>	BEST4 antibody was raised against synthetic 15 amino acid peptide from internal region of human BEST4. Percent identity with other species by BLAST analysis: Human, Gorilla, Gibbon, Monkey, Marmoset (100%); Rabbit (93%); Hamster (87%); Pig (80%).
<b>Specificity:</b>	Human BEST4. BLAST analysis of the peptide immunogen showed no homology with other human proteins.
<b>Epitope:</b>	Internal
<b>Reactivity:</b>	Human, Gorilla, Gibbon, Monkey
<b>Predicted Reactivity:</b>	Rabbit
<b>Purification:</b>	Immunoaffinity purified
<b>Presentation:</b>	PBS, 0.1% sodium azide.
<b>Recommended Storage:</b>	Long term: -70°C; Short term: +4°C
<b>Uses:</b>	IHC - Paraffin (2.5 µg/ml) (Optimal dilution to be determined by the researcher)
<b>Size:</b>	50 µg
<b>Concentration:</b>	1 mg/ml

**Immunohistochemistry Image:**



Anti-BEST4 antibody IHC of human small intestine. Immunohistochemistry of formalin-fixed, paraffin-embedded tissue after heat-induced antigen retrieval. Antibody LS-A8523 dilution 2.5 ug/ml.

**Immunohistochemistry Image:**



Anti-BEST4 antibody IHC of human stomach. Immunohistochemistry of formalin-fixed, paraffin-embedded tissue after heat-induced antigen retrieval. Antibody LS-A8523 dilution 2.5 ug/ml.

**Requested From:**

Japan

Laboratory Reagent For In Vitro Research Use Only

Not for resale without prior written consent from LifeSpan BioSciences, Inc.

Created on 9/23/2014

© 2014 LifeSpan BioSciences