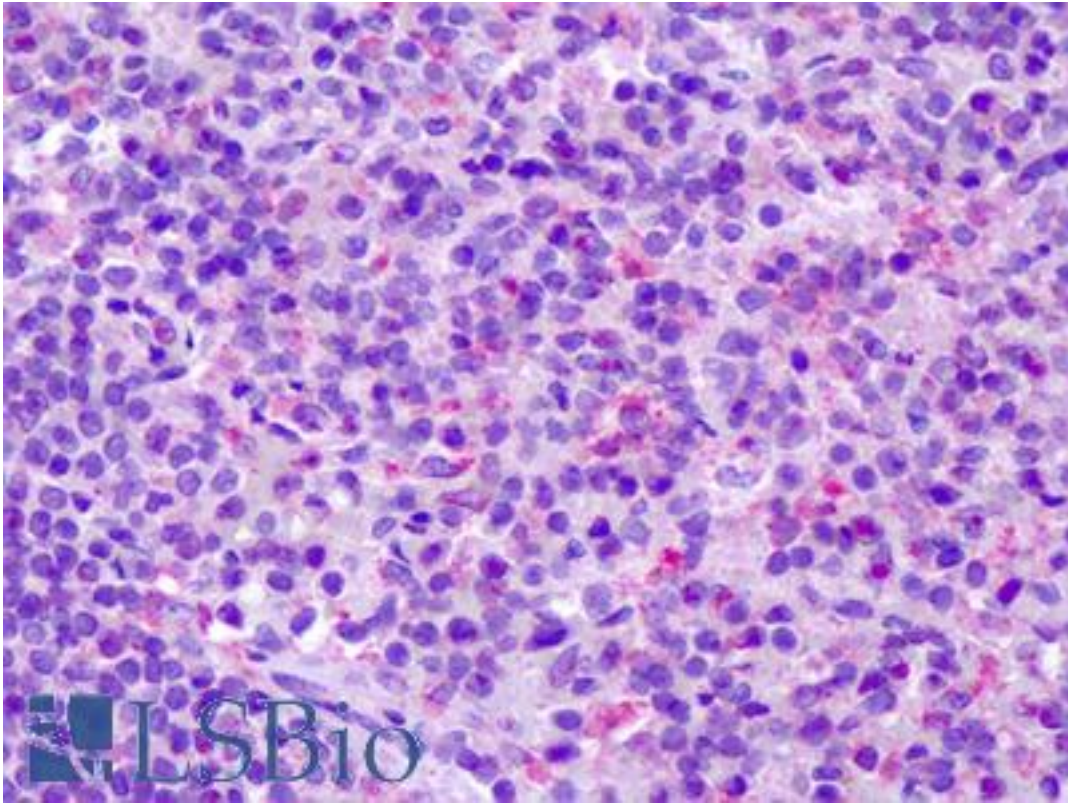


CCR7 Rabbit anti-Human Polyclonal (C-Terminus) Antibody - LS-A848 - LSBio

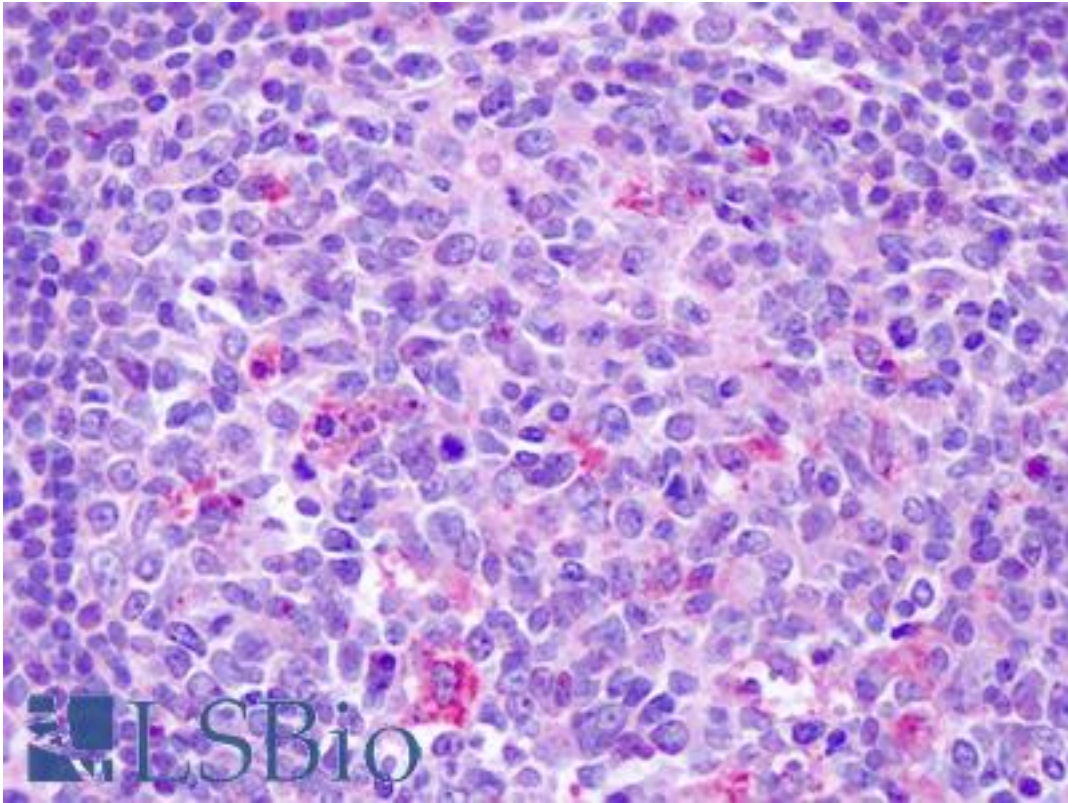
CatalogID:	LS-A848
Target:	chemokine (C-C motif) receptor 7 (CCR7)
Synonyms:	CCR7 Antibody, BLR2 Antibody, Chemokine (C-C) receptor 7 Antibody, CD197 Antibody, C-C CKR-7 Antibody, CMKBR7 Antibody, CC chemokine receptor 7 Antibody, CCR-7 Antibody, CD197 antigen Antibody, CDw197 Antibody, EB11 Antibody, EVI1 Antibody, MIP-3 beta receptor Antibody, C-c chemokine receptor 7 Antibody, C-C chemokine receptor type 7 Antibody, CC-CKR-7 Antibody, Chemokine c-c motif receptor 7 Antibody
Family / Subfamily:	GPCR / Chemokine
Host	CCR7 antibody was produced in Rabbit
Clonality:	Polyclonal
Immunogen Species:	CCR7 antibody was raised against Human
Antigen Type:	Synthetic peptide
Immunogen:	CCR7 antibody was raised against synthetic 17 amino acid peptide from C-terminus of human CCR7. Percent identity with other species by BLAST analysis: Human, Gorilla, Gibbon, Monkey, Marmoset, Bat, Bovine, Horse (100%); Mouse, Rat, Hamster, Elephant, Panda, Dog, Rabbit, Pig (94%); Turkey, Chicken, Zebrafish (88%); Opossum, Xenopus, Pufferfish (82%).
Specificity:	Human CCR7. BLAST analysis of the peptide immunogen showed no homology with other human proteins, except CXCR5 (65%).
Epitope:	C-Terminus
Reactivity:	Human, Gorilla, Gibbon, Monkey, Bat, Bovine, Horse
Predicted Reactivity:	Mouse, Rat, Dog, Hamster, Pig, Rabbit
Purification:	Immunoaffinity purified
Presentation:	PBS, 0.1% sodium azide.
Recommended Storage:	Long term: -70°C; Short term: +4°C
Uses:	IHC - Paraffin (14 µg/ml), ICC (Optimal dilution to be determined by the researcher)
Size:	50 µg
Concentration:	1 mg/ml

Immunohistochemistry Image:

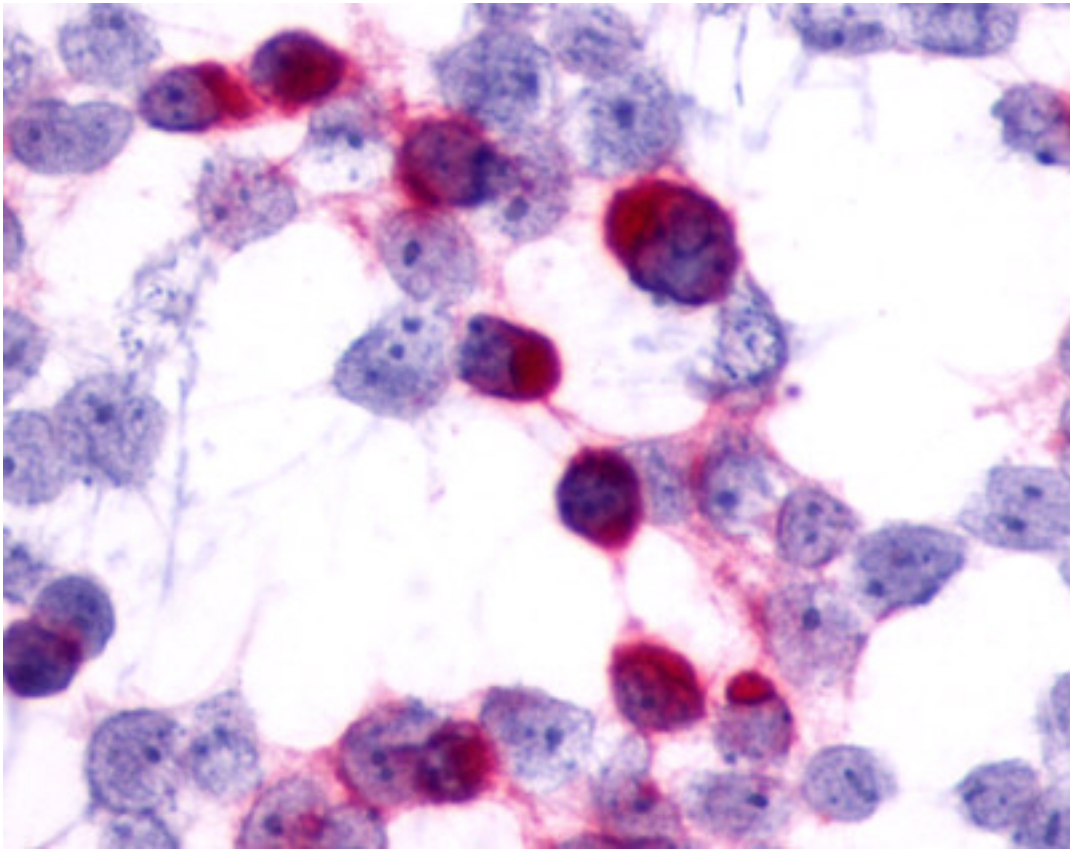


Anti-CCR7 antibody IHC of human spleen. Immunohistochemistry of formalin-fixed, paraffin-embedded tissue after heat-induced antigen retrieval. Antibody LS-A848 dilution 14 ug/ml.

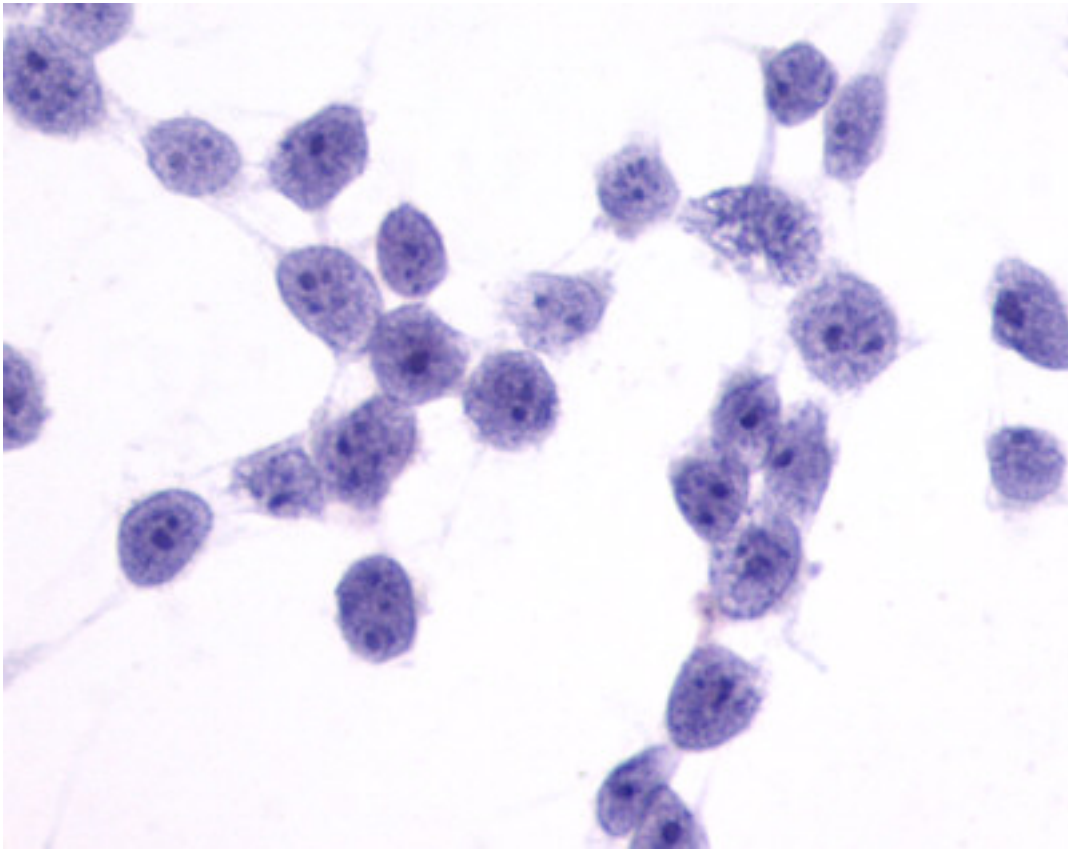
Immunohistochemistry Image:



Anti-CCR7 antibody IHC of human tonsil. Immunohistochemistry of formalin-fixed, paraffin-embedded tissue after heat-induced antigen retrieval. Antibody LS-A848 dilution 14 ug/ml.



Cells expressing vector only - immunostained with target antibody



Cells expressing vector only - immunostained with target antibody

Requested From:

Japan

Laboratory Reagent For In Vitro Research Use Only

Not for resale without prior written consent from LifeSpan BioSciences, Inc.

Created on 9/23/2014

© 2014 LifeSpan BioSciences