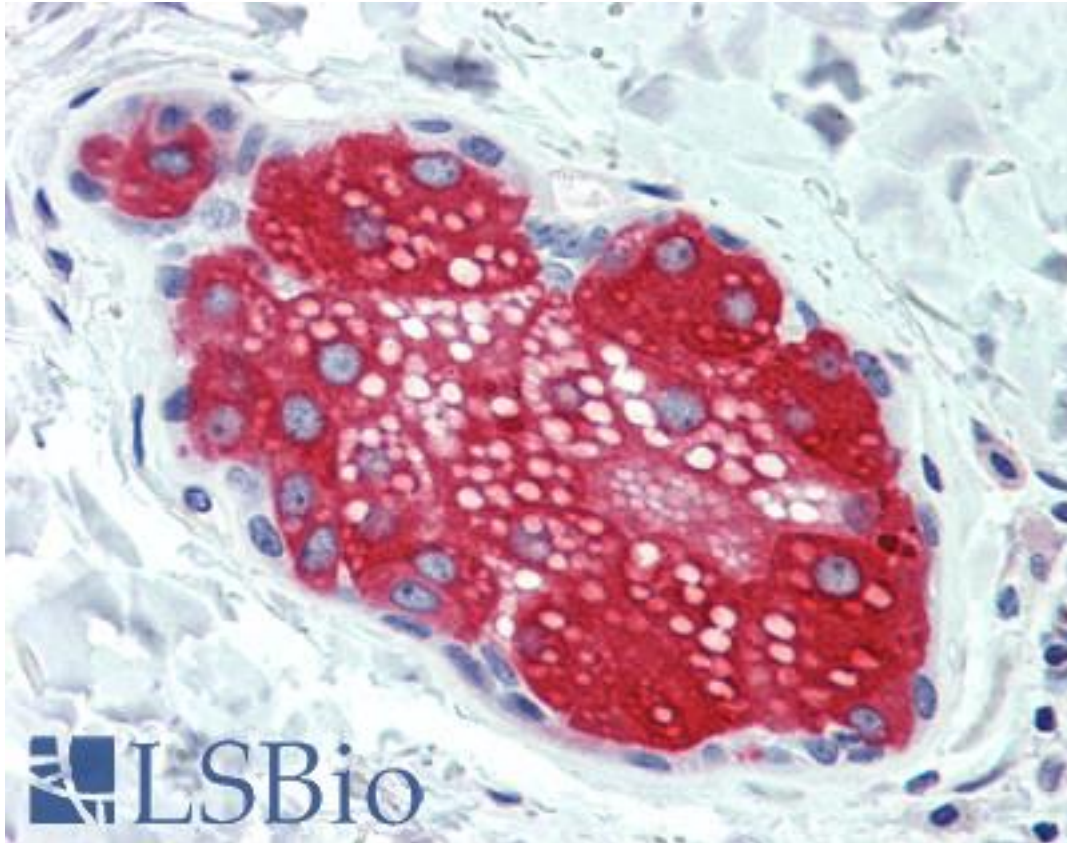


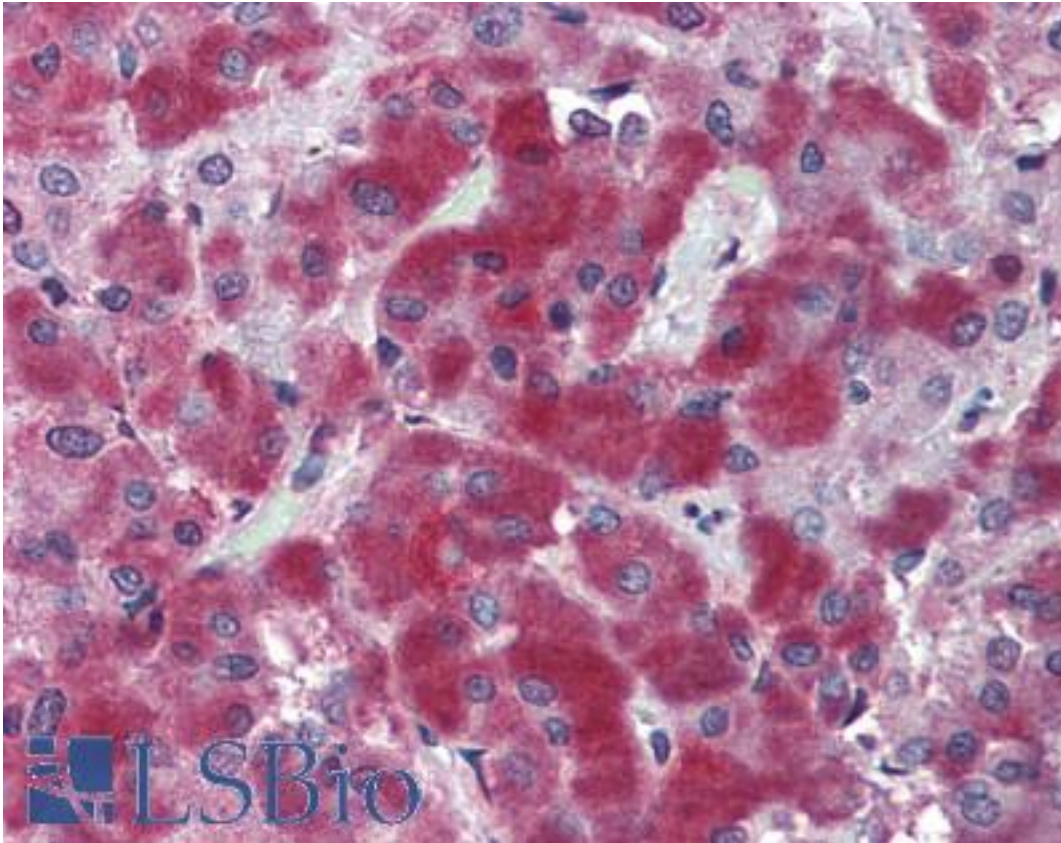
SUSD2 Rabbit anti-Human Polyclonal (Internal) Antibody - LS-A8474 - LSBio	
CatalogID:	LS-A8474
Target:	sushi domain containing 2 (SUSD2)
Synonyms:	SUSD2 Antibody, BK65A6.2 Antibody, Sushi domain containing 2 Antibody
Host	SUSD2 antibody was produced in Rabbit
Clonality:	Polyclonal
Immunogen Species:	SUSD2 antibody was raised against Human
Antigen Type:	Synthetic peptide
Immunogen:	SUSD2 antibody was raised against synthetic 18 amino acid peptide from internal region of human SUSD2. Percent identity with other species by BLAST analysis: Human, Gorilla, Monkey (100%); Chimpanzee, Orangutan (94%); Gibbon, Panda (89%); Galago, Opossum (83%).
Specificity:	Human SUSD2. BLAST analysis of the peptide immunogen showed no homology with other human proteins.
Epitope:	Internal
Reactivity:	Human, Gorilla, Monkey
Predicted Reactivity:	Chimpanzee, Orangutan
Purification:	Immunoaffinity purified
Presentation:	PBS, 0.1% sodium azide.
Recommended Storage:	Long term: -70°C; Short term: +4°C
Usage Summary:	Immunohistochemistry: LS-A8474 was validated for use in immunohistochemistry on a panel of 21 formalin-fixed, paraffin-embedded (FFPE) human tissues after heat induced antigen retrieval in pH 6.0 citrate buffer. After incubation with the primary antibody, slides were incubated with biotinylated secondary antibody, followed by alkaline phosphatase-streptavidin and chromogen. The stained slides were evaluated by a pathologist to confirm staining specificity. The optimal working concentration for LS-A8474 was determined to be 15 ug/ml.
Uses:	IHC - Paraffin (15 µg/ml) (Optimal dilution to be determined by the researcher)
Size:	50 µg
Concentration:	1 mg/ml

Immunohistochemistry Image:



Anti-SUSD2 antibody LS-A8474 IHC of human skin, sebaceous gland. Immunohistochemistry of formalin-fixed, paraffin-embedded tissue after heat-induced antigen retrieval.

Immunohistochemistry Image:



Anti-SUSD2 antibody LS-A8474 IHC of human adrenal. Immunohistochemistry of formalin-fixed, paraffin-embedded tissue after heat-induced antigen retrieval.

Requested From:

Japan

Laboratory Reagent For In Vitro Research Use Only

Not for resale without prior written consent from LifeSpan BioSciences, Inc.

Created on 9/23/2014

© 2014 LifeSpan BioSciences