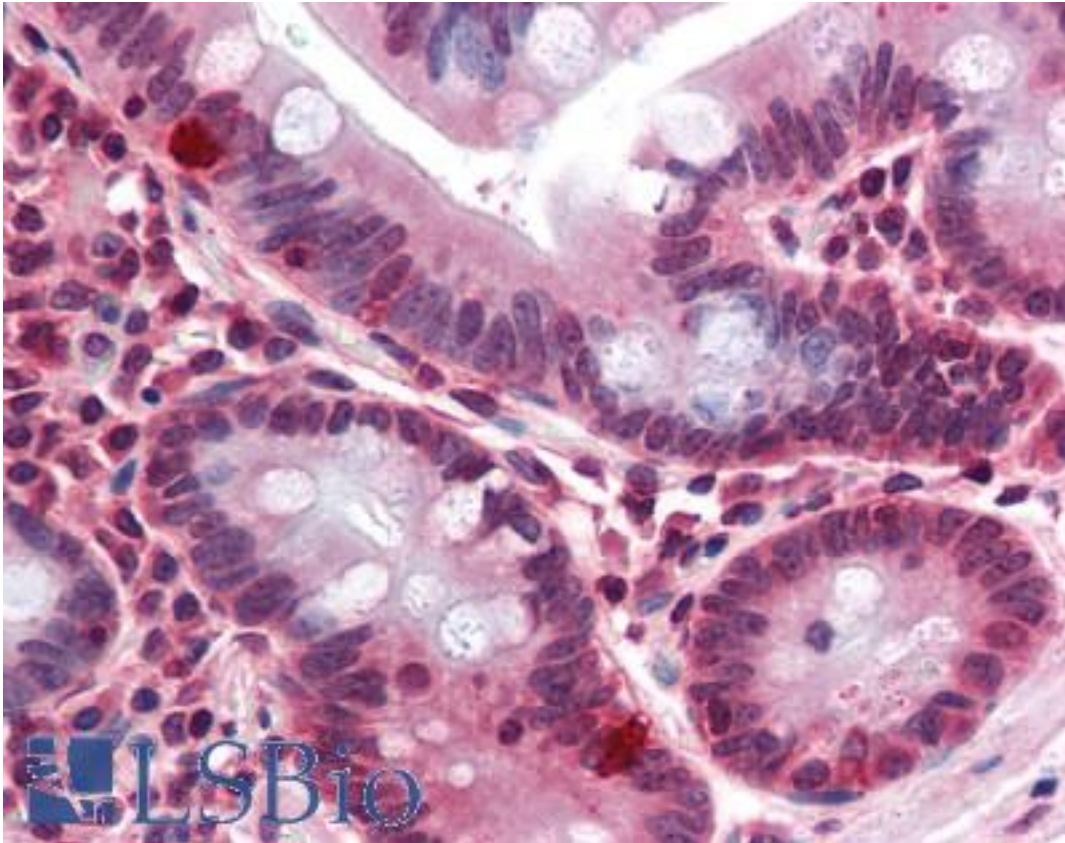


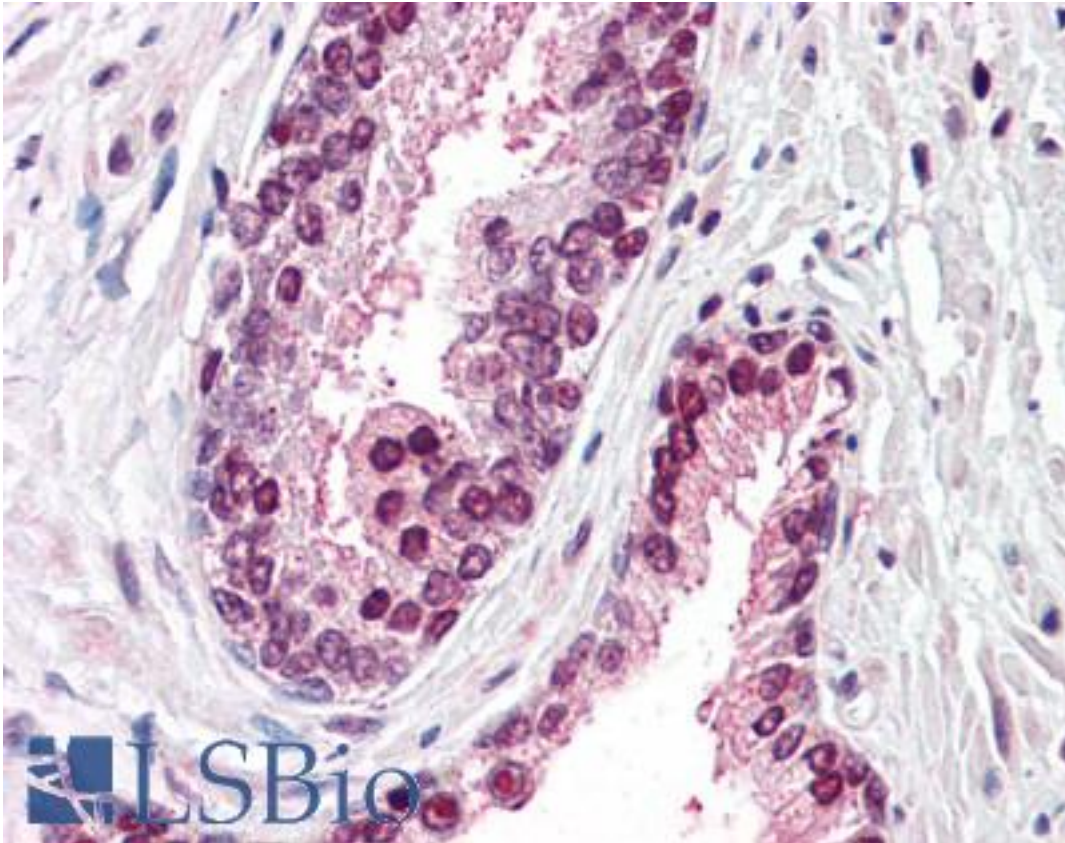
CDCP1 Rabbit anti-Human Polyclonal (Internal) Antibody - LS-A8450 - LSBio	
CatalogID:	LS-A8450
Target:	CUB Domain Containing Protein 1 (CDCP1)
Synonyms:	CDCP1 Antibody, CD318 antigen Antibody, Membrane glycoprotein gp140 Antibody, SIMA135 Antibody, TRASK Antibody, CD318 Antibody
Host	CDCP1 antibody was produced in Rabbit
Clonality:	Polyclonal
Immunogen Species:	CDCP1 antibody was raised against Human
Antigen Type:	Synthetic peptide
Immunogen:	CDCP1 antibody was raised against synthetic 15 amino acid peptide from internal region of human CDCP1. Percent identity with other species by BLAST analysis: Human, Chimpanzee, Orangutan, Monkey (100%); Gorilla, Gibbon, Marmoset (93%); Galago, Panda, Bat, Dog, Rabbit, Pig (87%); Mouse, Rat, Hamster (80%).
Specificity:	Human CDCP1. BLAST analysis of the peptide immunogen showed no homology with other human proteins. Immunogenic peptide is found in isoform 1 and 2.
Epitope:	Internal
Reactivity:	Human, Chimpanzee, Orangutan
Predicted Reactivity:	Gorilla, Gibbon, Monkey
Purification:	Immunoaffinity purified
Presentation:	PBS, 0.1% sodium azide.
Recommended Storage:	Long term: -70°C; Short term: +4°C
Uses:	IHC - Paraffin (10 - 15 µg/ml) (Optimal dilution to be determined by the researcher)
Size:	50 µg
Concentration:	0.5 mg/ml

Immunohistochemistry Image:



Anti-CDCP1 antibody LS-A8450 IHC of human small intestine. Immunohistochemistry of formalin-fixed, paraffin-embedded tissue after heat-induced antigen retrieval.

Immunohistochemistry Image:



Anti-CD133 antibody LS-A8450 IHC of human prostate. Immunohistochemistry of formalin-fixed, paraffin-embedded tissue after heat-induced antigen retrieval.

Requested From:

Japan

Laboratory Reagent For In Vitro Research Use Only

Not for resale without prior written consent from LifeSpan BioSciences, Inc.

Created on 9/23/2014

© 2014 LifeSpan BioSciences