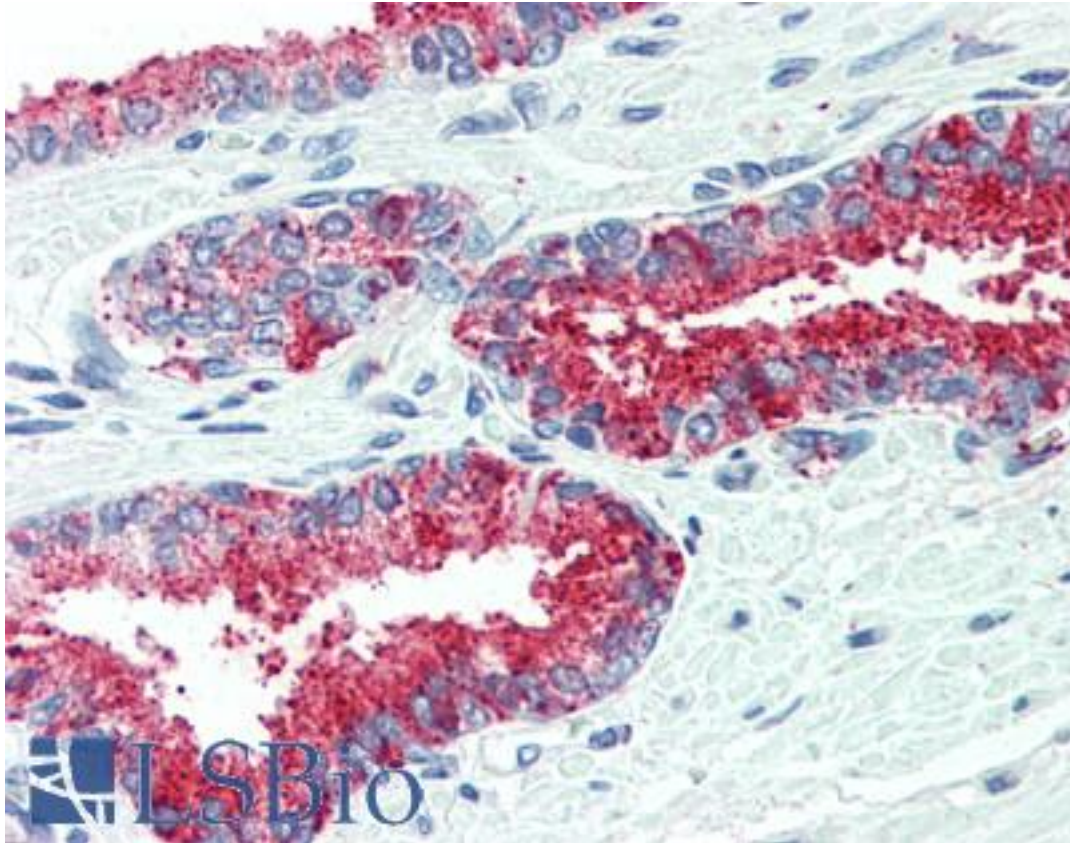


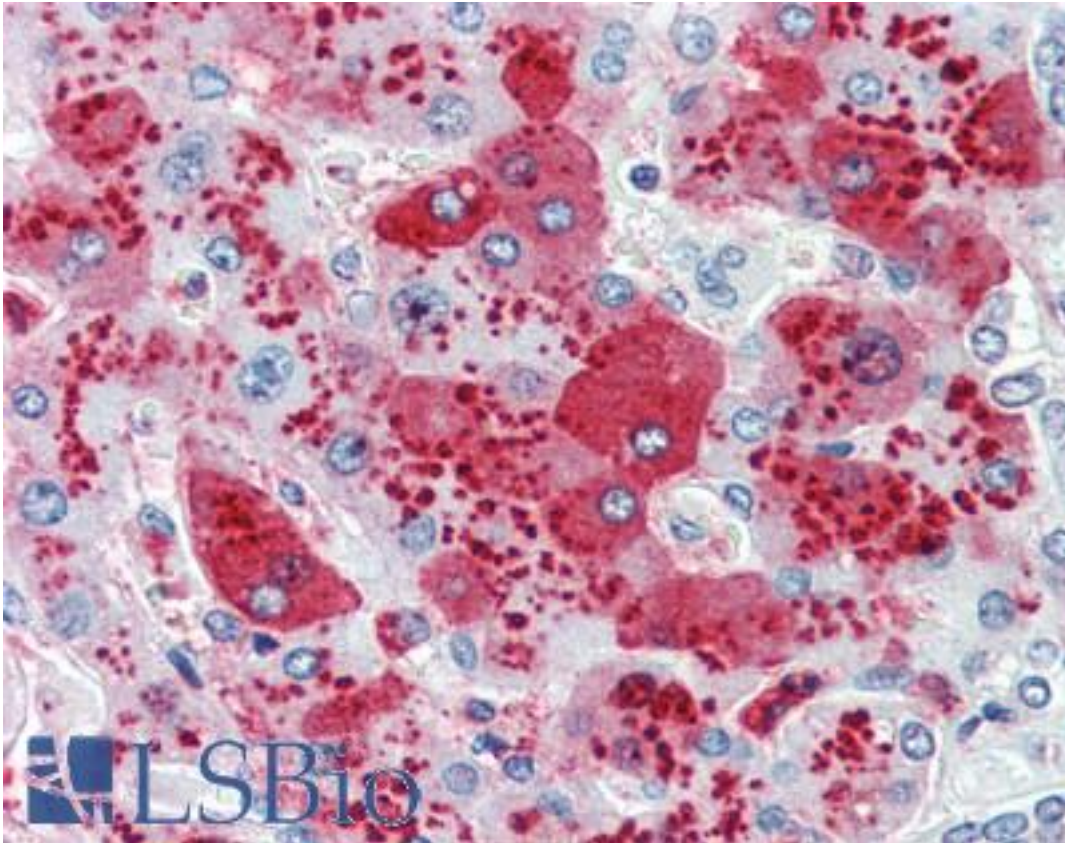
CDCP1 Rabbit anti-Human Polyclonal (Internal) Antibody - LS-A8449 - LSBio	
<b>CatalogID:</b>	LS-A8449
<b>Target:</b>	CUB Domain Containing Protein 1 (CDCP1)
<b>Synonyms:</b>	CDCP1 Antibody, CD318 antigen Antibody, Membrane glycoprotein gp140 Antibody, SIMA135 Antibody, TRASK Antibody, CD318 Antibody
<b>Host</b>	CDCP1 antibody was produced in Rabbit
<b>Clonality:</b>	Polyclonal
<b>Immunogen Species:</b>	CDCP1 antibody was raised against Human
<b>Antigen Type:</b>	Synthetic peptide
<b>Immunogen:</b>	CDCP1 antibody was raised against synthetic 20 amino acid peptide from internal region of human CDCP1. Percent identity with other species by BLAST analysis: Human, Chimpanzee, Gorilla, Orangutan, Gibbon, Monkey, Galago, Marmoset, Rat (100%); Mouse, Panda, Dog, Rabbit, Horse, Pig (95%); Elephant (90%); Hamster, Bovine, Bat (80%).
<b>Specificity:</b>	Human CDCP1. BLAST analysis of the peptide immunogen showed no homology with other human proteins. Immunogenic peptide is found in isoforms 1, 2, and 3.
<b>Epitope:</b>	Internal
<b>Reactivity:</b>	Human, Chimpanzee, Gorilla, Orangutan, Gibbon, Monkey, Rat
<b>Predicted Reactivity:</b>	Mouse, Dog, Horse, Pig, Rabbit
<b>Purification:</b>	Immunoaffinity purified
<b>Presentation:</b>	PBS, 0.1% sodium azide.
<b>Recommended Storage:</b>	Long term: -70°C; Short term: +4°C
<b>Usage Summary:</b>	Immunohistochemistry: LS-A8449 was validated for use in immunohistochemistry on a panel of 21 formalin-fixed, paraffin-embedded (FFPE) human tissues after heat induced antigen retrieval in pH 6.0 citrate buffer. After incubation with the primary antibody, slides were incubated with biotinylated secondary antibody, followed by alkaline phosphatase-streptavidin and chromogen. The stained slides were evaluated by a pathologist to confirm staining specificity. The optimal working concentration for LS-A8449 was determined to be 15 ug/ml.
<b>Uses:</b>	IHC - Paraffin (15 µg/ml) (Optimal dilution to be determined by the researcher)
<b>Size:</b>	50 µg
<b>Concentration:</b>	1 mg/ml

**Immunohistochemistry Image:**



Anti-CD45 antibody LS-A8449 IHC of human prostate. Immunohistochemistry of formalin-fixed, paraffin-embedded tissue after heat-induced antigen retrieval.

**Immunohistochemistry Image:**



Anti-CDCP1 antibody LS-A8449 IHC of human liver. Immunohistochemistry of formalin-fixed, paraffin-embedded tissue after heat-induced antigen retrieval.

**Requested From:**

Japan

Laboratory Reagent For In Vitro Research Use Only

Not for resale without prior written consent from LifeSpan BioSciences, Inc.

Created on 9/23/2014

© 2014 LifeSpan BioSciences