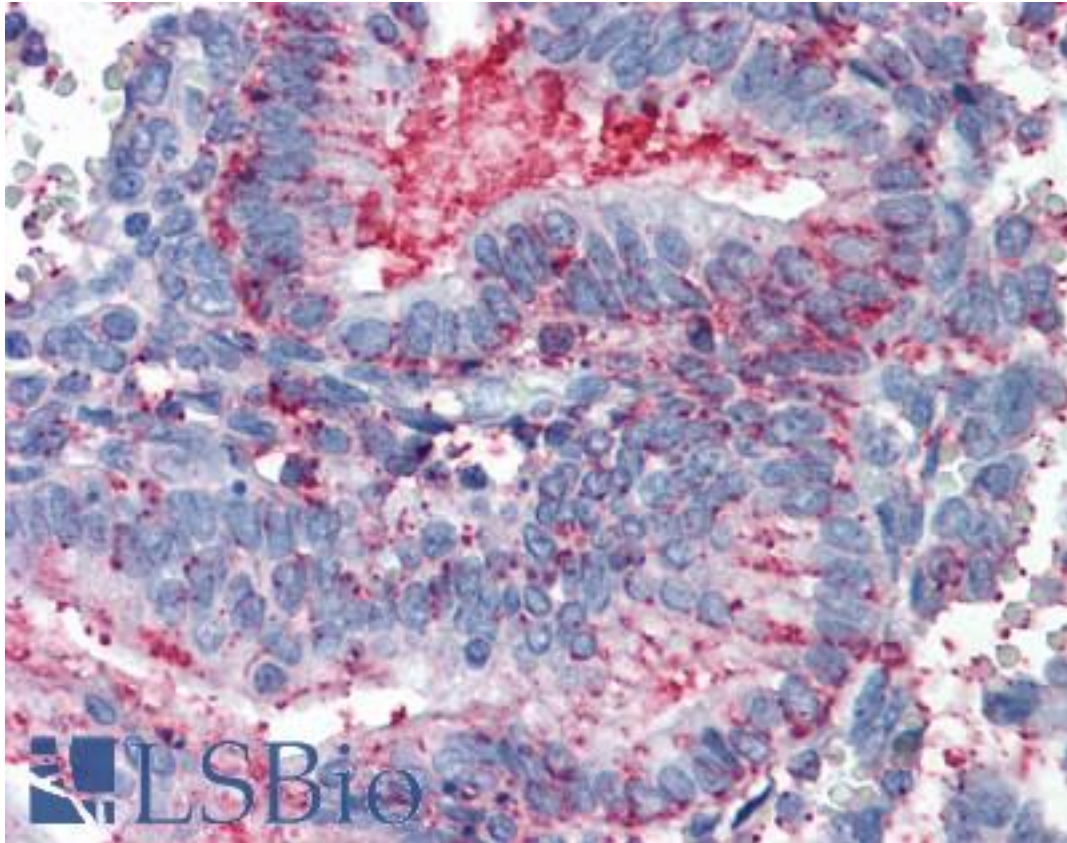


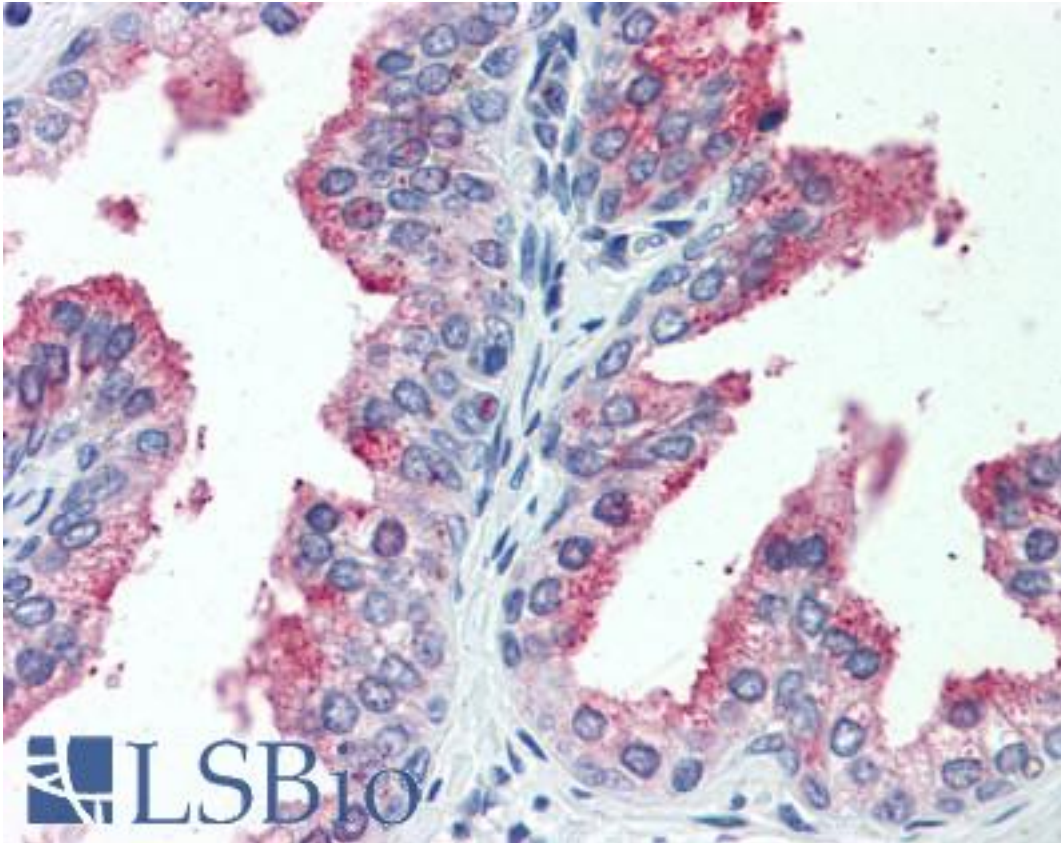
CDCP1 Rabbit anti-Human Polyclonal (Extracellular Domain) Antibody - LS-A8447 - LSBio	
<b>CatalogID:</b>	LS-A8447
<b>Target:</b>	CUB Domain Containing Protein 1 (CDCP1)
<b>Synonyms:</b>	CDCP1 Antibody, CD318 antigen Antibody, Membrane glycoprotein gp140 Antibody, SIMA135 Antibody, TRASK Antibody, CD318 Antibody
<b>Host</b>	CDCP1 antibody was produced in Rabbit
<b>Clonality:</b>	Polyclonal
<b>Immunogen Species:</b>	CDCP1 antibody was raised against Human
<b>Antigen Type:</b>	Synthetic peptide
<b>Immunogen:</b>	CDCP1 antibody was raised against synthetic 15 amino acid peptide from extracellular domain of human CDCP1. Percent identity with other species by BLAST analysis: Human, Gorilla, Gibbon, Monkey, Marmoset, Panda, Horse (100%); Hamster, Rabbit (93%); Mouse, Rat, Dog, Elephant, Pig (87%).
<b>Specificity:</b>	Human CDCP1. BLAST analysis of the peptide immunogen showed no homology with other human proteins. Immunogenic peptide is found in isoform 1 and 3.
<b>Epitope:</b>	Extracellular Domain
<b>Reactivity:</b>	Human, Gorilla, Gibbon, Monkey, Horse
<b>Predicted Reactivity:</b>	Hamster, Rabbit
<b>Purification:</b>	Immunoaffinity purified
<b>Presentation:</b>	PBS, 0.1% sodium azide.
<b>Recommended Storage:</b>	Long term: -70°C; Short term: +4°C
<b>Uses:</b>	IHC - Paraffin (10 - 12.5 µg/ml) (Optimal dilution to be determined by the researcher)
<b>Size:</b>	50 µg
<b>Concentration:</b>	1 mg/ml

**Immunohistochemistry Image:**



Anti-CDCP1 antibody LS-A8447 IHC of human uterus. Immunohistochemistry of formalin-fixed, paraffin-embedded tissue after heat-induced antigen retrieval.

**Immunohistochemistry Image:**



Anti-CDCP1 antibody LS-A8447 IHC of human prostate. Immunohistochemistry of formalin-fixed, paraffin-embedded tissue after heat-induced antigen retrieval.

**Requested From:**

Japan

Laboratory Reagent For In Vitro Research Use Only

Not for resale without prior written consent from LifeSpan BioSciences, Inc.

Created on 9/23/2014

© 2014 LifeSpan BioSciences