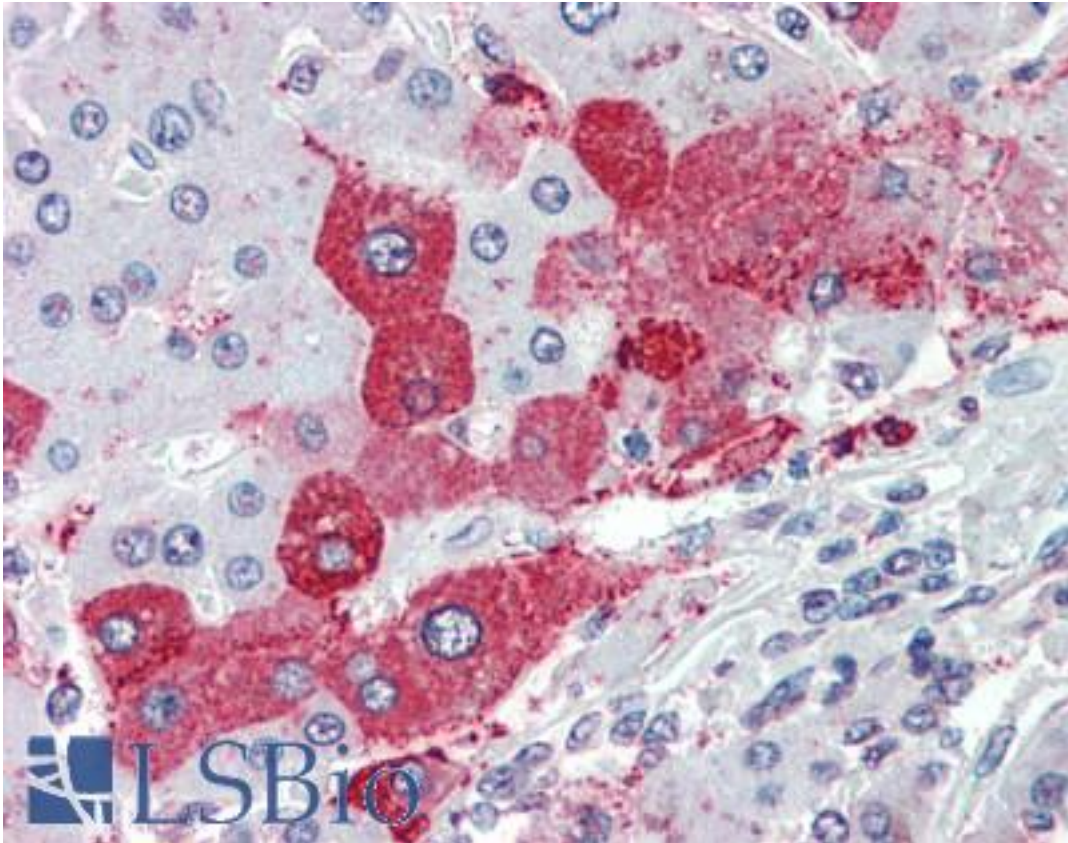


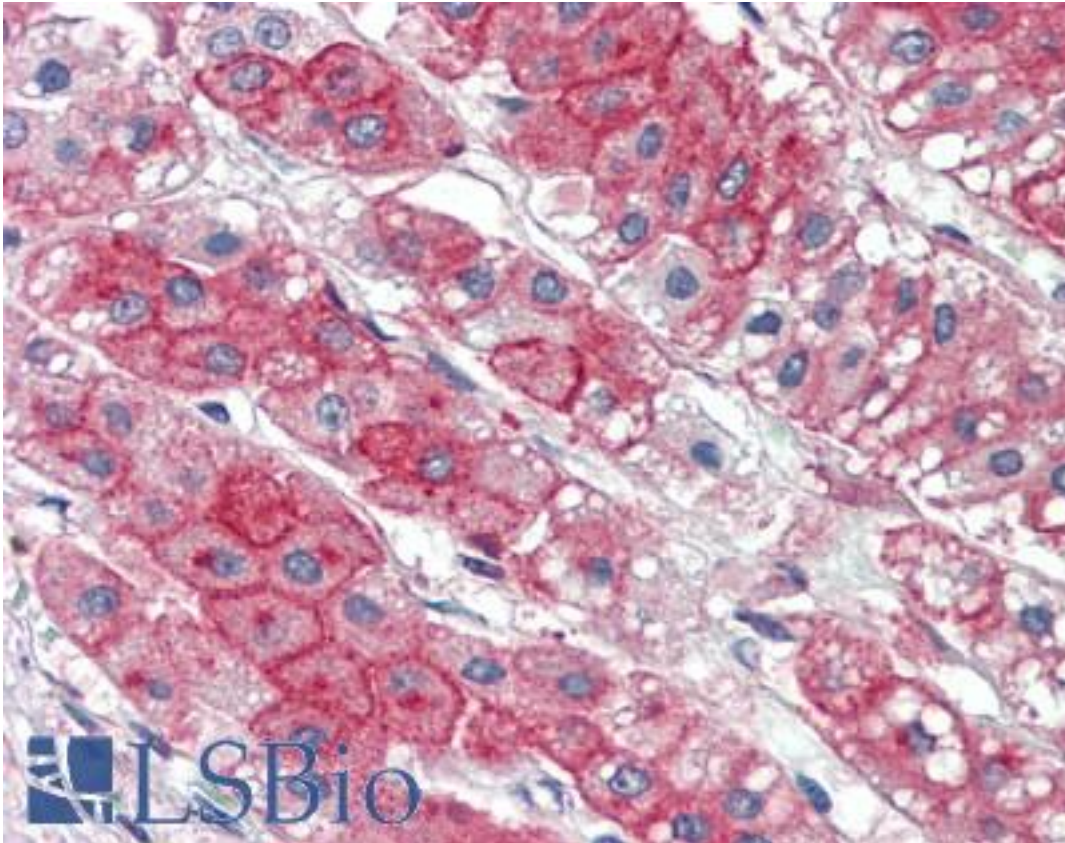
KIAA1324 / maba1 Rabbit anti-Human Polyclonal (Internal) Antibody - LS-A8439 - LSBio	
CatalogID:	LS-A8439
Target:	KIAA1324
Synonyms:	KIAA1324 Antibody, EIG121 Antibody, Estrogen induced gene 121 Antibody, Maba1 Antibody, RP11-352P4.1 Antibody, UPF0577 protein KIAA1324 Antibody
Host	KIAA1324 antibody was produced in Rabbit
Clonality:	Polyclonal
Immunogen Species:	KIAA1324 / maba1 antibody was raised against Human
Antigen Type:	Synthetic peptide
Immunogen:	KIAA1324 / maba1 antibody was raised against synthetic 17 amino acid peptide from internal region of human KIAA1324. Percent identity with other species by BLAST analysis: Human, Chimpanzee, Gorilla, Orangutan, Gibbon, Monkey (100%); Marmoset, Elephant (94%); Galago, Panda, Dog, Horse, Opossum, Platypus (88%); Mouse, Rat, Hamster, Bat, Bovine, Pig, Lizard (82%).
Specificity:	Human KIAA1324. BLAST analysis of the peptide immunogen showed no homology with other human proteins.
Epitope:	Internal
Reactivity:	Human, Chimpanzee, Gorilla, Orangutan, Gibbon
Predicted Reactivity:	Monkey
Purification:	Immunoaffinity purified
Presentation:	PBS, 0.1% sodium azide.
Recommended Storage:	Long term: -70°C; Short term: +4°C
Usage Summary:	Immunohistochemistry: LS-A8439 was validated for use in immunohistochemistry on a panel of 21 formalin-fixed, paraffin-embedded (FFPE) human tissues after heat induced antigen retrieval in pH 6.0 citrate buffer. After incubation with the primary antibody, slides were incubated with biotinylated secondary antibody, followed by alkaline phosphatase-streptavidin and chromogen. The stained slides were evaluated by a pathologist to confirm staining specificity. The optimal working concentration for LS-A8439 was determined to be 15 ug/ml.
Uses:	IHC - Paraffin (15 µg/ml) (Optimal dilution to be determined by the researcher)
Size:	50 µg
Concentration:	1 mg/ml

Immunohistochemistry Image:



Anti-KIAA1324 antibody LS-A8439 IHC of human liver. Immunohistochemistry of formalin-fixed, paraffin-embedded tissue after heat-induced antigen retrieval.

Immunohistochemistry Image:



Anti-KIAA1324 antibody LS-A8439 IHC of human adrenal. Immunohistochemistry of formalin-fixed, paraffin-embedded tissue after heat-induced antigen retrieval.

Requested From:

Japan

Laboratory Reagent For In Vitro Research Use Only

Not for resale without prior written consent from LifeSpan BioSciences, Inc.

Created on 9/23/2014

© 2014 LifeSpan BioSciences