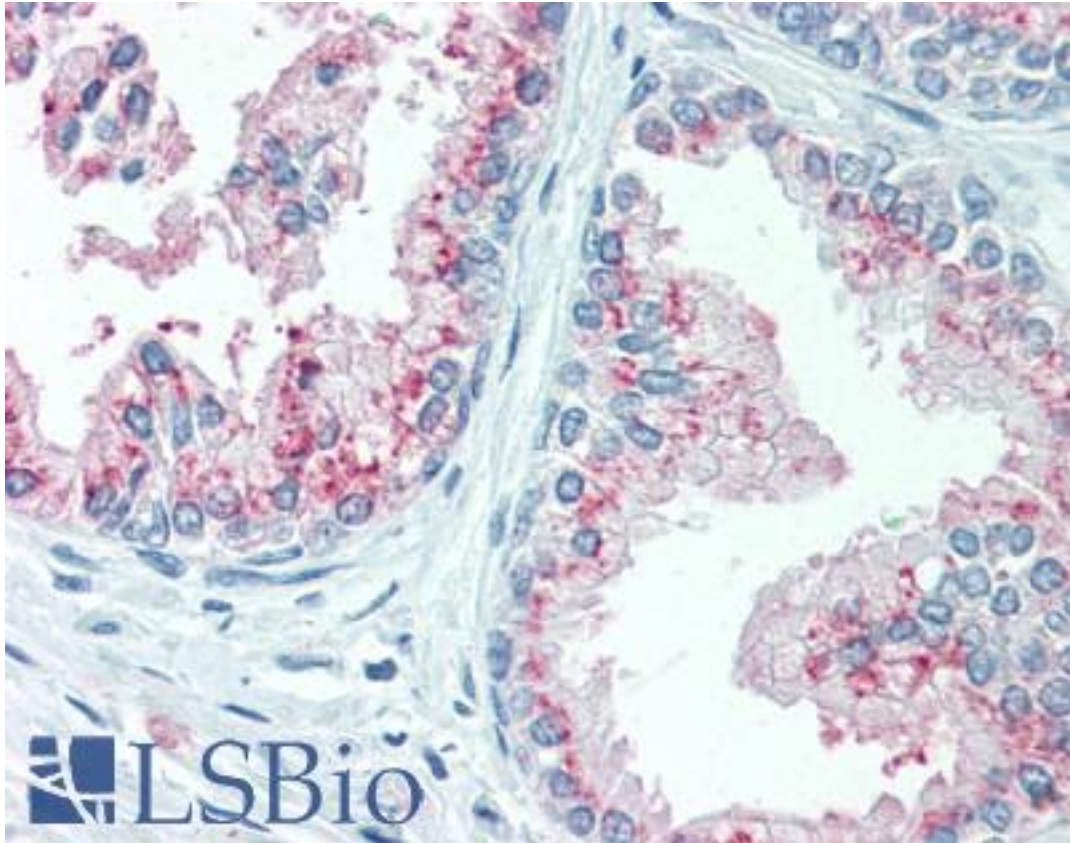


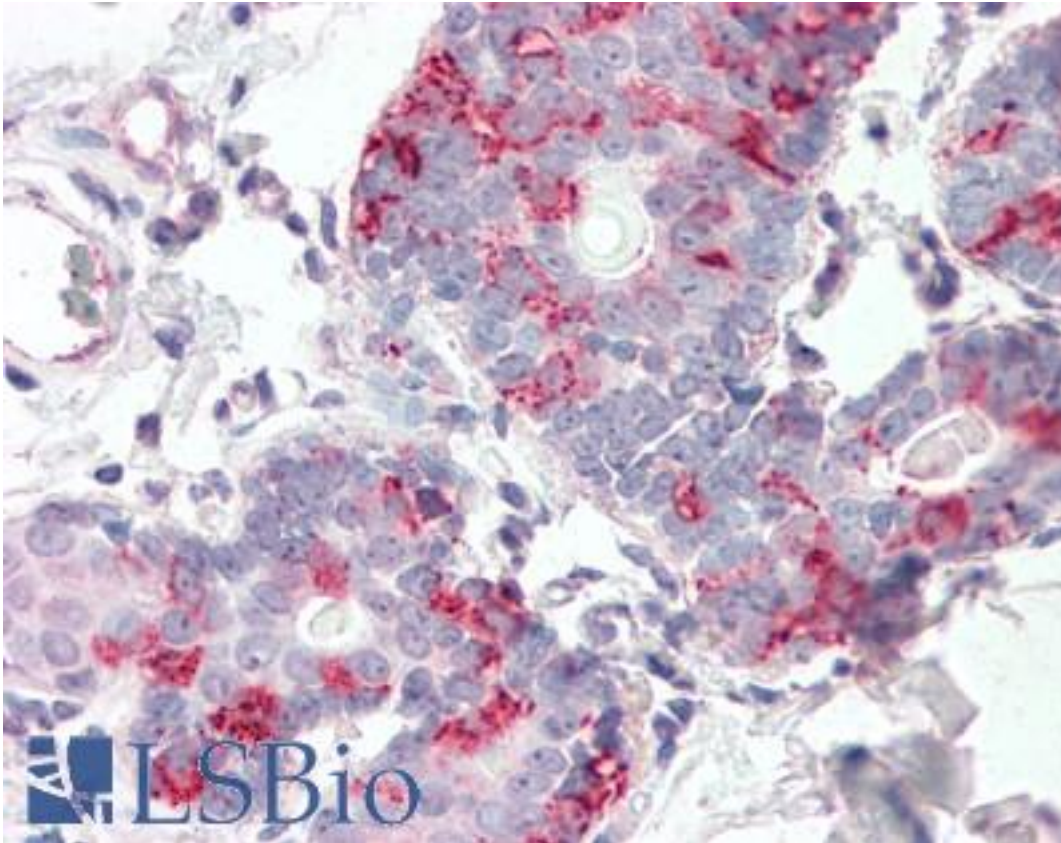
KIAA1324 / maba1 Rabbit anti-Human Polyclonal (N-Terminus) Antibody - LS-A8434 - LSBio	
<b>CatalogID:</b>	LS-A8434
<b>Target:</b>	KIAA1324
<b>Synonyms:</b>	KIAA1324 Antibody, EIG121 Antibody, Estrogen induced gene 121 Antibody, Maba1 Antibody, RP11-352P4.1 Antibody, UPF0577 protein KIAA1324 Antibody
<b>Host</b>	KIAA1324 antibody was produced in Rabbit
<b>Clonality:</b>	Polyclonal
<b>Immunogen Species:</b>	KIAA1324 / maba1 antibody was raised against Human
<b>Antigen Type:</b>	Synthetic peptide
<b>Immunogen:</b>	KIAA1324 / maba1 antibody was raised against synthetic 19 amino acid peptide from N-terminus of human KIAA1324. Percent identity with other species by BLAST analysis: Human, Gorilla, Monkey, Panda, Horse, Rabbit (100%); Marmoset, Mouse, Elephant (95%); Bat, Pig (89%).
<b>Specificity:</b>	Human KIAA1324. BLAST analysis of the peptide immunogen showed no homology with other human proteins.
<b>Epitope:</b>	N-Terminus
<b>Reactivity:</b>	Human, Gorilla, Horse, Rabbit
<b>Predicted Reactivity:</b>	Monkey, Mouse
<b>Purification:</b>	Immunoaffinity purified
<b>Presentation:</b>	PBS, 0.1% sodium azide.
<b>Recommended Storage:</b>	Long term: -70°C; Short term: +4°C
<b>Uses:</b>	IHC - Paraffin (10 - 15 µg/ml) (Optimal dilution to be determined by the researcher)
<b>Size:</b>	50 µg
<b>Concentration:</b>	1 mg/ml

**Immunohistochemistry Image:**



Anti-KIAA1324 antibody LS-A8434 IHC of human prostate. Immunohistochemistry of formalin-fixed, paraffin-embedded tissue after heat-induced antigen retrieval.

**Immunohistochemistry Image:**



Anti-KIAA1324 antibody LS-A8434 IHC of human breast. Immunohistochemistry of formalin-fixed, paraffin-embedded tissue after heat-induced antigen retrieval.

**Requested From:**

Japan

Laboratory Reagent For In Vitro Research Use Only

Not for resale without prior written consent from LifeSpan BioSciences, Inc.

Created on 9/23/2014

© 2014 LifeSpan BioSciences