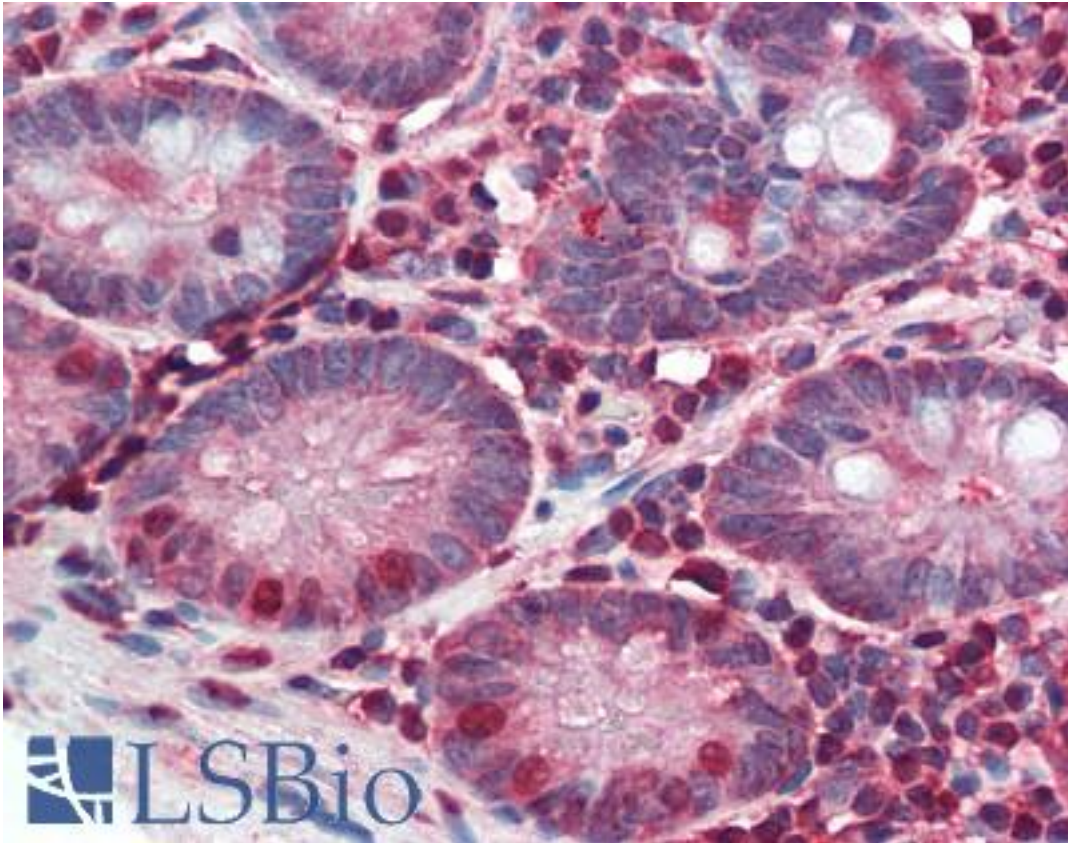


PIGR Rabbit anti-Human Polyclonal (Cytoplasmic Domain) Antibody - LS-A8430 - LSBio

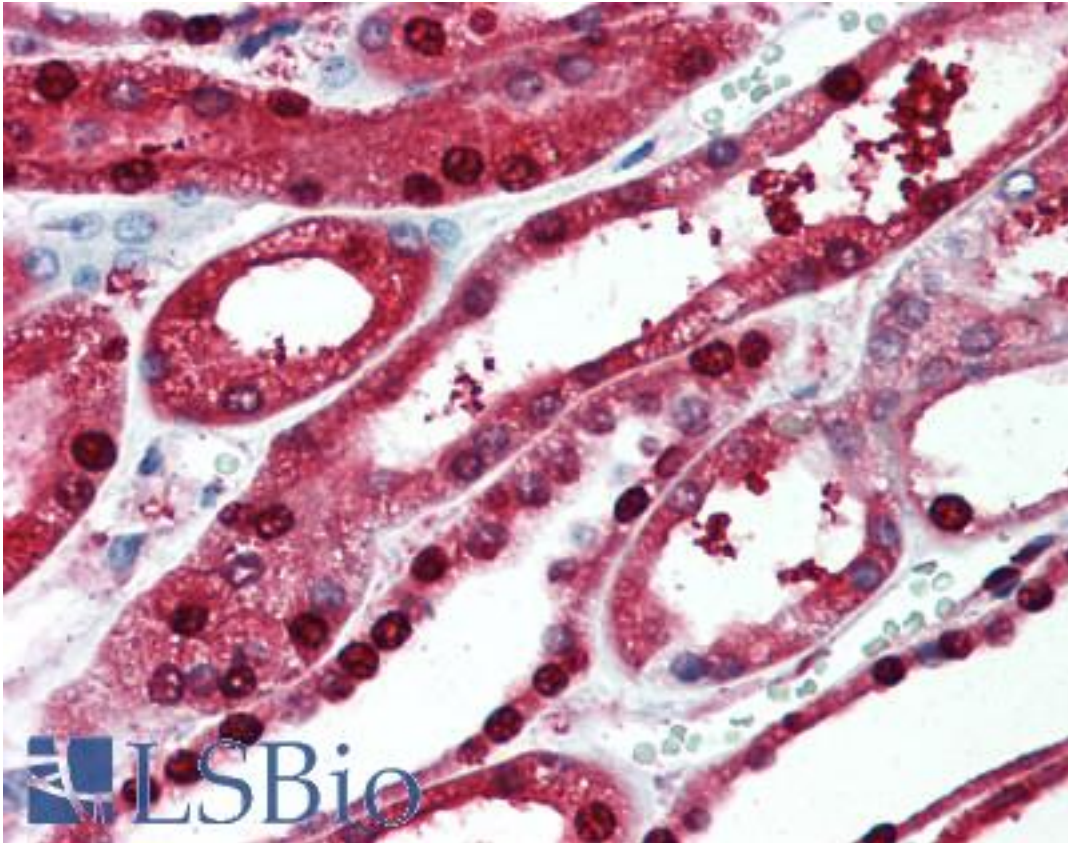
CatalogID:	LS-A8430
Target:	Polymeric Immunoglobulin Receptor (PIGR)
Synonyms:	PIGR Antibody, Poly-Ig receptor Antibody
Host	PIGR antibody was produced in Rabbit
Clonality:	Polyclonal
Immunogen Species:	PIGR antibody was raised against Human
Antigen Type:	Synthetic peptide
Immunogen:	PIGR antibody was raised against synthetic 18 amino acid peptide from cytoplasmic domain of human PIGR. Percent identity with other species by BLAST analysis: Human, Gorilla, Orangutan, Gibbon, Monkey (100%); Marmoset (89%); Dog, Elephant, Horse (83%).
Specificity:	Human PIGR. BLAST analysis of the peptide immunogen showed no homology with other human proteins.
Epitope:	Cytoplasmic Domain
Reactivity:	Human, Gorilla, Orangutan, Gibbon, Monkey
Purification:	Immunoaffinity purified
Presentation:	PBS, 0.1% sodium azide.
Recommended Storage:	Long term: -70°C; Short term: +4°C
Uses:	IHC - Paraffin (5 - 7.5 µg/ml) (Optimal dilution to be determined by the researcher)
Size:	50 µg
Concentration:	1 mg/ml

Immunohistochemistry Image:



Anti-PIGR antibody LS-A8430 IHC of human small intestine. Immunohistochemistry of formalin-fixed, paraffin-embedded tissue after heat-induced antigen retrieval.

Immunohistochemistry Image:



Anti-PIGR antibody LS-A8430 IHC of human kidney. Immunohistochemistry of formalin-fixed, paraffin-embedded tissue after heat-induced antigen retrieval.

Requested From:

Japan

Laboratory Reagent For In Vitro Research Use Only

Not for resale without prior written consent from LifeSpan BioSciences, Inc.

Created on 9/23/2014

© 2014 LifeSpan BioSciences