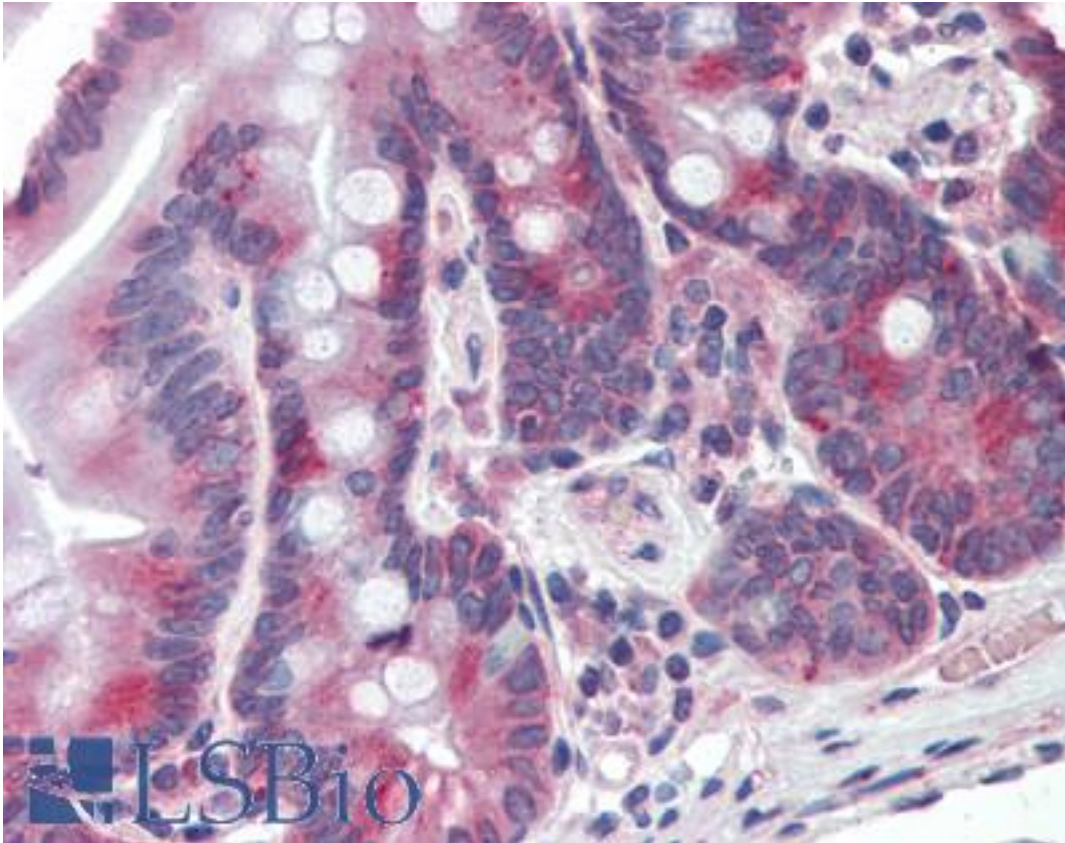


**PIGR Rabbit anti-Human Polyclonal (Extracellular Domain) Antibody - LS-A8426 - LSBio**

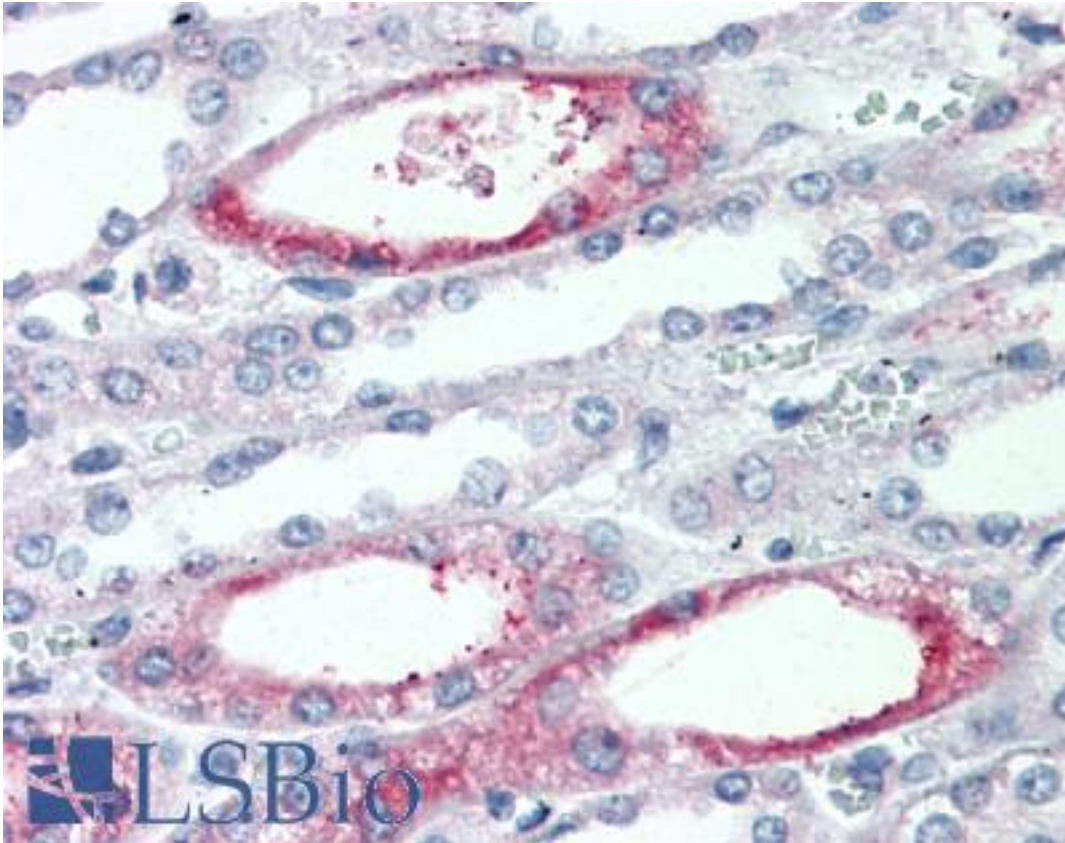
<b>CatalogID:</b>	LS-A8426
<b>Target:</b>	Polymeric Immunoglobulin Receptor (PIGR)
<b>Synonyms:</b>	PIGR Antibody, Poly-Ig receptor Antibody
<b>Host</b>	PIGR antibody was produced in Rabbit
<b>Clonality:</b>	Polyclonal
<b>Immunogen Species:</b>	PIGR antibody was raised against Human
<b>Antigen Type:</b>	Synthetic peptide
<b>Immunogen:</b>	PIGR antibody was raised against synthetic 19 amino acid peptide from extracellular domain of human PIGR. Percent identity with other species by BLAST analysis: Human, Gorilla (100%); Gibbon, Monkey (95%); Orangutan, Marmoset (89%).
<b>Specificity:</b>	Human PIGR. BLAST analysis of the peptide immunogen showed no homology with other human proteins.
<b>Epitope:</b>	Extracellular Domain
<b>Reactivity:</b>	Human, Gorilla
<b>Predicted Reactivity:</b>	Gibbon, Monkey
<b>Purification:</b>	Immunoaffinity purified
<b>Presentation:</b>	PBS, 0.1% sodium azide.
<b>Recommended Storage:</b>	Long term: -70°C; Short term: +4°C
<b>Uses:</b>	IHC - Paraffin (15 - 20 µg/ml) (Optimal dilution to be determined by the researcher)
<b>Size:</b>	50 µg
<b>Concentration:</b>	1 mg/ml

**Immunohistochemistry Image:**



Anti-PIGR antibody LS-A8426 IHC of human small intestine. Immunohistochemistry of formalin-fixed, paraffin-embedded tissue after heat-induced antigen retrieval.

**Immunohistochemistry Image:**



Anti-PIGR antibody LS-A8426 IHC of human kidney. Immunohistochemistry of formalin-fixed, paraffin-embedded tissue after heat-induced antigen retrieval.

**Requested From:**

Japan

Laboratory Reagent For In Vitro Research Use Only

Not for resale without prior written consent from LifeSpan BioSciences, Inc.

Created on 9/23/2014

© 2014 LifeSpan BioSciences