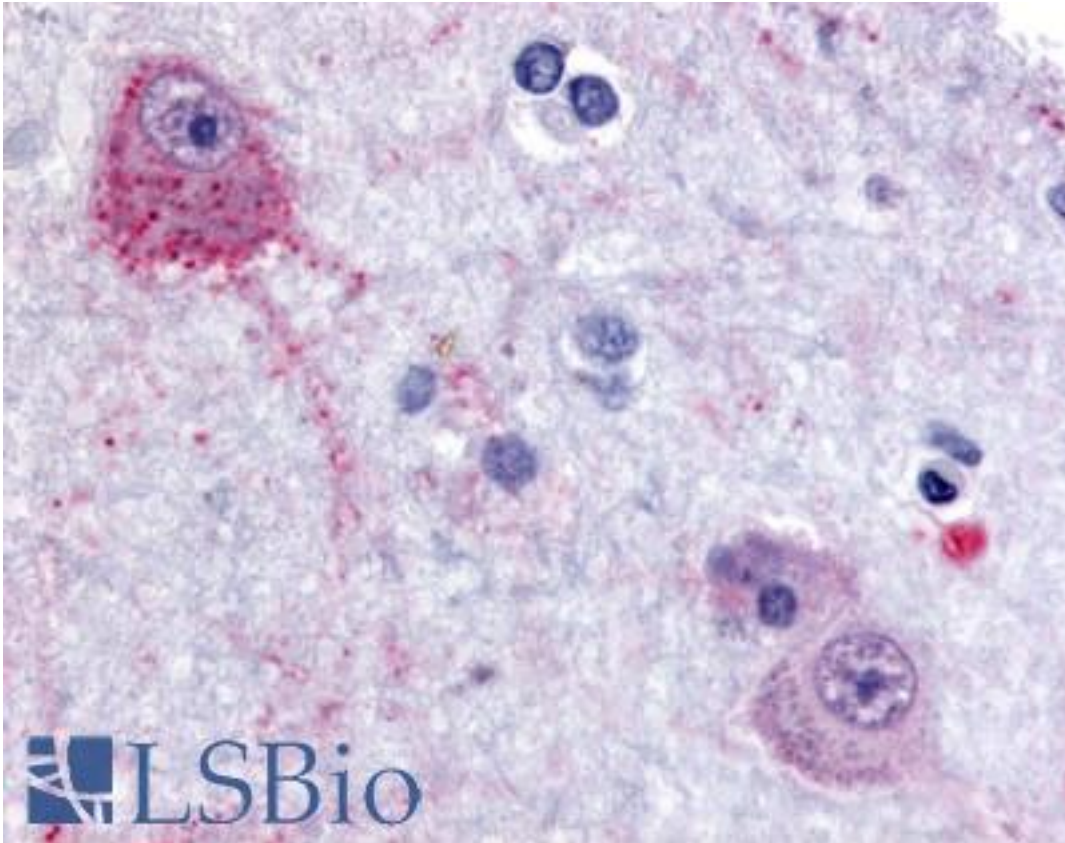


PACE4 / PCSK6 Rabbit anti-Human Polyclonal (Internal) Antibody - LS-A8407 - LSBio	
<b>CatalogID:</b>	LS-A8407
<b>Target:</b>	proprotein convertase subtilisin/kexin type 6 (PCSK6)
<b>Synonyms:</b>	PCSK6 Antibody, PACE4 Antibody, SPC4 Antibody
<b>Family / Subfamily:</b>	Protease / Serine S8
<b>Host</b>	PCSK6 antibody was produced in Rabbit
<b>Clonality:</b>	Polyclonal
<b>Immunogen Species:</b>	PACE4 / PCSK6 antibody was raised against Human
<b>Antigen Type:</b>	Synthetic peptide
<b>Immunogen:</b>	PACE4 / PCSK6 antibody was raised against synthetic 16 amino acid peptide from internal region of human PACE4. Percent identity with other species by BLAST analysis: Human, Gorilla, Gibbon, Monkey, Rabbit (100%); Marmoset (94%); Mouse, Rat, Elephant, Panda, Bovine, Dog, Horse, Pig, Opossum (88%); Bat (81%).
<b>Specificity:</b>	Human PACE4. BLAST analysis of the peptide immunogen showed no homology with other human proteins.
<b>Epitope:</b>	Internal
<b>Reactivity:</b>	Human, Gorilla, Gibbon, Rabbit
<b>Predicted Reactivity:</b>	Monkey
<b>Purification:</b>	Immunoaffinity purified
<b>Presentation:</b>	PBS, 0.1% sodium azide.
<b>Recommended Storage:</b>	Long term: -70°C; Short term: +4°C
<b>Uses:</b>	IHC - Paraffin (10 - 15 µg/ml) (Optimal dilution to be determined by the researcher)
<b>Size:</b>	50 µg
<b>Concentration:</b>	1 mg/ml

**Immunohistochemistry Image:**



Anti-PACE4 antibody LS-A8407 IHC of human brain, cortex. Immunohistochemistry of formalin-fixed, paraffin-embedded tissue after heat-induced antigen retrieval.

**Requested From:**

Japan

Laboratory Reagent For In Vitro Research Use Only

Not for resale without prior written consent from LifeSpan BioSciences, Inc.

Created on 9/23/2014

© 2014 LifeSpan BioSciences