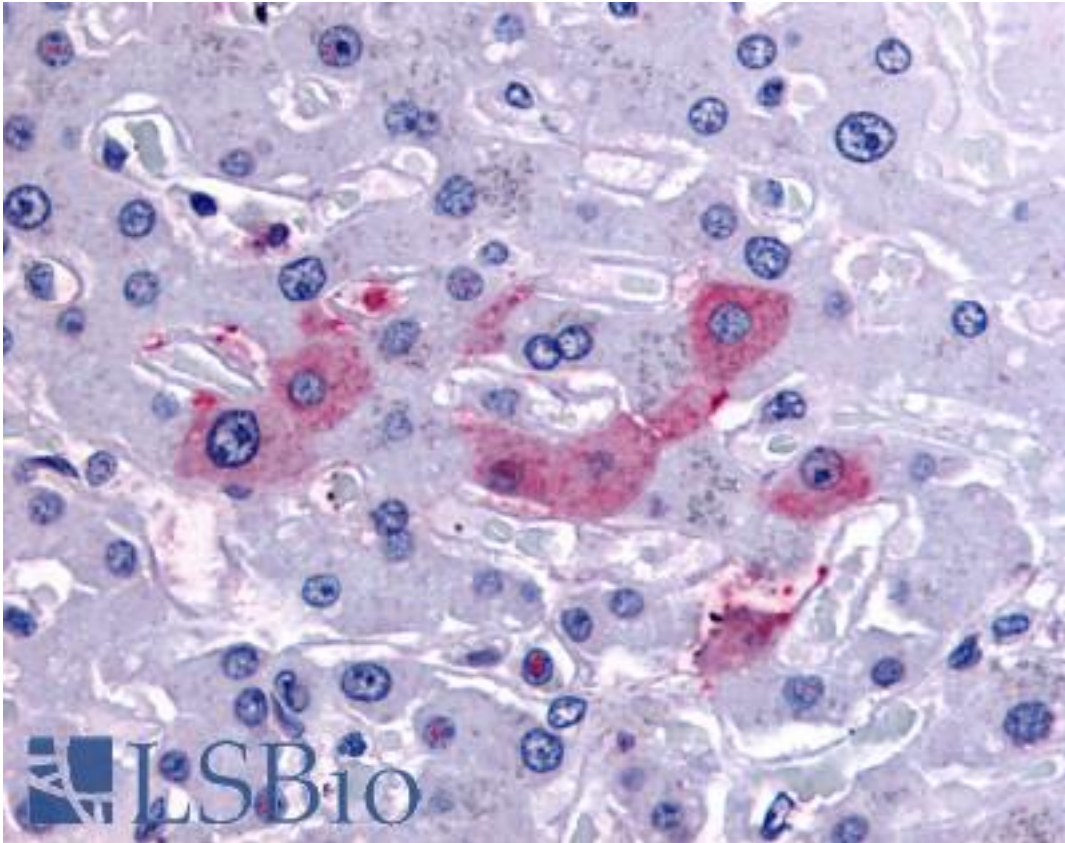


SYVN1 / HRD1 Rabbit anti-Human Polyclonal (Internal) Antibody - LS-A8402 - LSBio

CatalogID:	LS-A8402
Target:	synovial apoptosis inhibitor 1, synoviolin (SYVN1)
Synonyms:	SYVN1 Antibody, KIAA1810 Antibody, Synoviolin Antibody, Synovial apoptosis inhibitor 1 Antibody, DER3 Antibody, HRD1 Antibody
Host	SYVN1 antibody was produced in Rabbit
Clonality:	Polyclonal
Immunogen Species:	SYVN1 / HRD1 antibody was raised against Human
Antigen Type:	Synthetic peptide
Immunogen:	SYVN1 / HRD1 antibody was raised against synthetic 18 amino acid peptide from internal region of human SYVN1 / HRD1. Percent identity with other species by BLAST analysis: Human, Gorilla, Gibbon, Monkey, Marmoset, Mouse, Rat, Hamster, Elephant, Panda, Bovine, Dog, Bat, Horse, Rabbit, Opossum, Xenopus, Stickleback, Pufferfish, Zebrafish (100%).
Specificity:	Human SYVN1 / HRD1. BLAST analysis of the peptide immunogen showed no homology with other human proteins.
Epitope:	Internal
Reactivity:	Human, Gorilla, Gibbon, Monkey, Mouse, Rat, Bat, Bovine, Dog, Hamster, Horse, Rabbit, Xenopus, Zebrafish
Purification:	Immunoaffinity purified
Presentation:	PBS, 0.1% sodium azide.
Recommended Storage:	Long term: -70°C; Short term: +4°C
Uses:	IHC - Paraffin (5 - 10 µg/ml) (Optimal dilution to be determined by the researcher)
Size:	50 µg
Concentration:	1 mg/ml

Immunohistochemistry Image:



Anti-SYVN1 / HRD1 antibody LS-A8402 IHC of human liver. Immunohistochemistry of formalin-fixed, paraffin-embedded tissue after heat-induced antigen retrieval.

Requested From:

Japan

Laboratory Reagent For In Vitro Research Use Only

Not for resale without prior written consent from LifeSpan BioSciences, Inc.

Created on 9/23/2014

© 2014 LifeSpan BioSciences