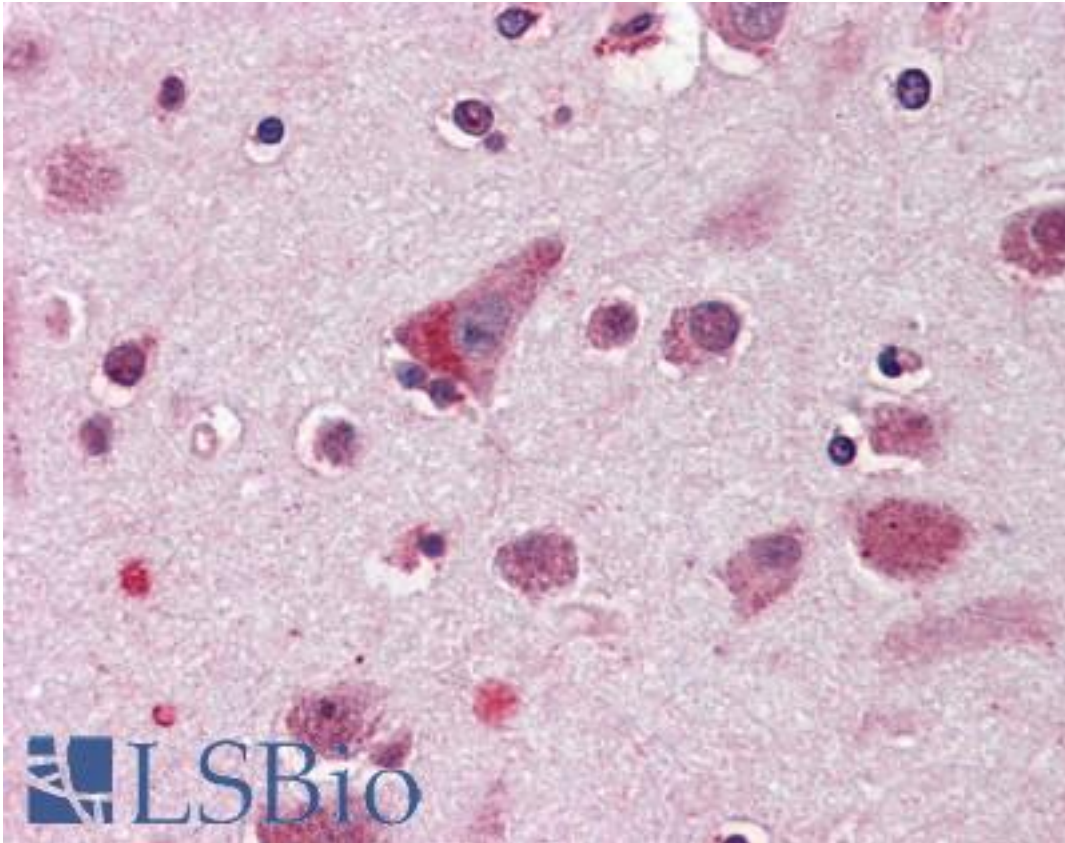


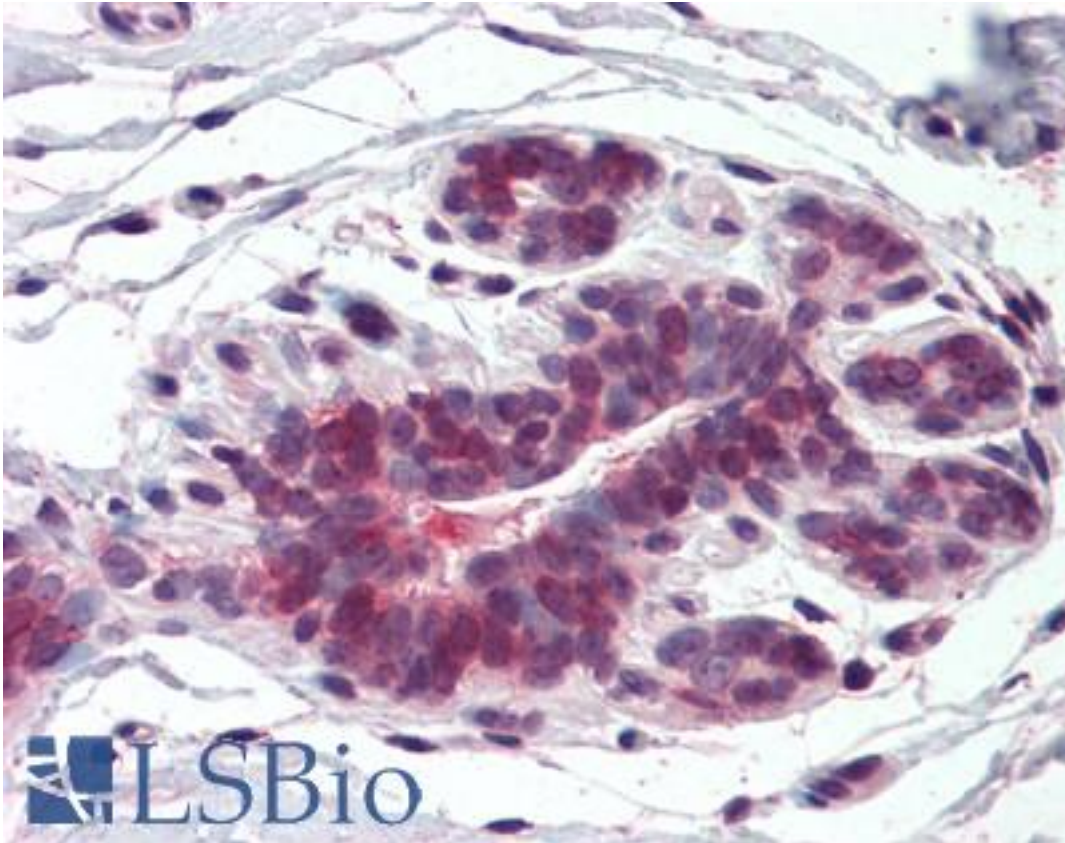
HELO1 / ELOVL5 Rabbit anti-Human Polyclonal (Internal) Antibody - LS-A8398 - LSBio	
<b>CatalogID:</b>	LS-A8398
<b>Target:</b>	ELOVL fatty acid elongase 5 (ELOVL5)
<b>Synonyms:</b>	ELOVL5 Antibody, ELOVL FA elongase 5 Antibody, ELOVL fatty acid elongase 5 Antibody, Fatty acid elongase 1 Antibody, RP3-483K16.1 Antibody, DJ483K16.1 Antibody, HELO1 Antibody
<b>Host</b>	ELOVL5 antibody was produced in Rabbit
<b>Clonality:</b>	Polyclonal
<b>Immunogen Species:</b>	HELO1 / ELOVL5 antibody was raised against Human
<b>Antigen Type:</b>	Synthetic peptide
<b>Immunogen:</b>	HELO1 / ELOVL5 antibody was raised against synthetic 18 amino acid peptide from internal region of human ELOVL5. Percent identity with other species by BLAST analysis: Human, Gorilla, Orangutan, Gibbon, Monkey, Elephant, Rabbit (100%); Marmoset, Mouse, Dog (94%); Rat, Hamster, Panda (89%); Bat (83%).
<b>Specificity:</b>	Human ELOVL5. BLAST analysis of the peptide immunogen showed no homology with other human proteins, except PLAGL1 (39%), PLAG1 (39%).
<b>Epitope:</b>	Internal
<b>Reactivity:</b>	Human, Gorilla, Orangutan, Gibbon, Rabbit
<b>Predicted Reactivity:</b>	Monkey, Mouse, Dog
<b>Purification:</b>	Immunoaffinity purified
<b>Presentation:</b>	PBS, 0.1% sodium azide.
<b>Recommended Storage:</b>	Long term: -70°C; Short term: +4°C
<b>Uses:</b>	IHC - Paraffin (5 - 10 µg/ml) (Optimal dilution to be determined by the researcher)
<b>Size:</b>	50 µg
<b>Concentration:</b>	1 mg/ml

**Immunohistochemistry Image:**



Anti-ELOVL5 antibody LS-A8398 IHC of human brain, cortex. Immunohistochemistry of formalin-fixed, paraffin-embedded tissue after heat-induced antigen retrieval.

**Immunohistochemistry Image:**



Anti-ELOVL5 antibody LS-A8398 IHC of human breast. Immunohistochemistry of formalin-fixed, paraffin-embedded tissue after heat-induced antigen retrieval.

**Requested From:**

Japan

Laboratory Reagent For In Vitro Research Use Only

Not for resale without prior written consent from LifeSpan BioSciences, Inc.

Created on 9/23/2014

© 2014 LifeSpan BioSciences