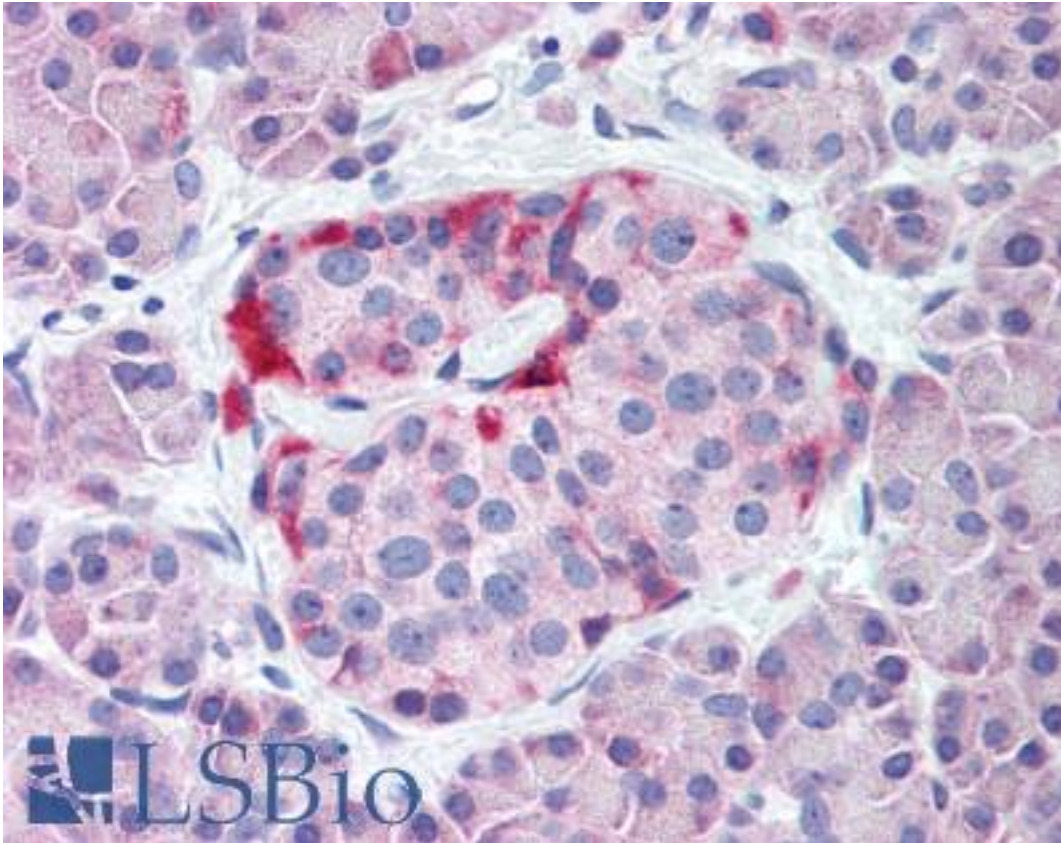


**KCNJ6 / GIRK2 Rabbit anti-Human Polyclonal (N-Terminus) Antibody - LS-A8377 - LSBio**

<b>CatalogID:</b>	LS-A8377
<b>Target:</b>	potassium inwardly-rectifying channel, subfamily J, member 6 (KCNJ6)
<b>Synonyms:</b>	KCNJ6 Antibody, BIR1 Antibody, GIRK2 Antibody, HiGIRK2 Antibody, KATP2 Antibody, GIRK-2 Antibody, KATP-2 Antibody, KIR3.2 Antibody, Weaver Antibody, KCNJ7 Antibody
<b>Family / Subfamily:</b>	Ion Channel / Potassium channel - inward-rectifying
<b>Host</b>	KCNJ6 antibody was produced in Rabbit
<b>Clonality:</b>	Polyclonal
<b>Immunogen Species:</b>	KCNJ6 / GIRK2 antibody was raised against Human
<b>Antigen Type:</b>	Synthetic peptide
<b>Immunogen:</b>	KCNJ6 / GIRK2 antibody was raised against synthetic 15 amino acid peptide from N-terminus of human KCNJ6 / GIRK2. Percent identity with other species by BLAST analysis: Human, Gorilla, Orangutan, Gibbon, Monkey, Marmoset, Mouse, Rat, Hamster, Elephant, Panda, Dog, Bovine, Bat, Horse, Pig (100%); Opossum (93%); Turkey, Platypus, Lizard (87%).
<b>Specificity:</b>	Human KCNJ6 / GIRK2. BLAST analysis of the peptide immunogen showed no homology with other human proteins.
<b>Epitope:</b>	N-Terminus
<b>Reactivity:</b>	Human, Gorilla, Orangutan, Gibbon, Monkey, Mouse, Rat, Bat, Bovine, Dog, Hamster, Horse, Pig
<b>Purification:</b>	Immunoaffinity purified
<b>Presentation:</b>	PBS, 0.1% sodium azide.
<b>Recommended Storage:</b>	Store at 4°C for short term applications. For long term storage, aliquot and store at -20°C.
<b>Uses:</b>	IHC - Paraffin (20 µg/ml) (Optimal dilution to be determined by the researcher)
<b>Size:</b>	50 µg
<b>Concentration:</b>	1 mg/ml

**Immunohistochemistry Image:**



Anti-KCNJ6 / GIRK2 antibody LS-A8377 IHC of human pancreas, islet.  
Immunohistochemistry of formalin-fixed, paraffin-embedded tissue after heat-induced antigen retrieval.

**Requested From:**

Japan

Laboratory Reagent For In Vitro Research Use Only

Not for resale without prior written consent from LifeSpan BioSciences, Inc.

Created on 9/23/2014

© 2014 LifeSpan BioSciences