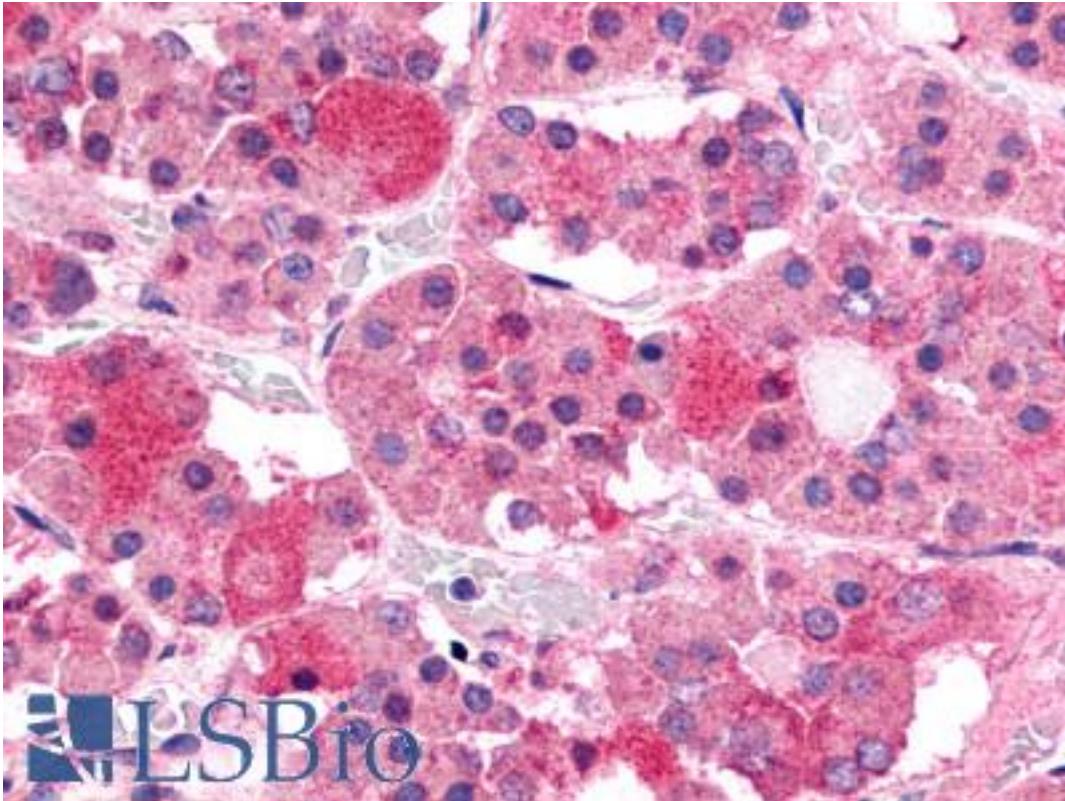


GHRHR Rabbit anti-Human Polyclonal (C-Terminus) Antibody - LS-A836 - LSBio

CatalogID:	LS-A836
Target:	growth hormone releasing hormone receptor (GHRHR)
Synonyms:	GHRHR Antibody, GHRFR Antibody, GRFR Antibody, IGHD1B Antibody, GRF receptor Antibody, GH-releasing hormone receptor Antibody, GHRH receptor Antibody, Ghrh-r Antibody
Family / Subfamily:	GPCR / Growth hormone releasing hormone
Host	GHRHR antibody was produced in Rabbit
Clonality:	Polyclonal
Immunogen Species:	GHRHR antibody was raised against Human
Antigen Type:	Synthetic peptide
Immunogen:	GHRHR antibody was raised against synthetic 16 amino acid peptide from C-terminus of human GHRHR. Percent identity with other species by BLAST analysis: Human, Gorilla, Gibbon, Monkey, Marmoset (100%); Mouse, Rat, Hamster, Elephant, Zebu, Rabbit, Pig (94%); Panda, Bovine, Dog, Horse (88%).
Specificity:	Human GHRHR. BLAST analysis of the peptide immunogen showed no homology with other human proteins.
Epitope:	C-Terminus
Reactivity:	Human, Gorilla, Gibbon, Monkey
Predicted Reactivity:	Mouse, Rat, Hamster, Pig, Rabbit
Purification:	Immunoaffinity purified
Presentation:	PBS, 0.1% sodium azide.
Recommended Storage:	Long term: -70°C; Short term: +4°C
Uses:	IHC - Paraffin (10 - 16 µg/ml) (Optimal dilution to be determined by the researcher)
Size:	50 µg
Concentration:	1 mg/ml

Immunohistochemistry Image:



Anti-GHRHR antibody LS-A836 IHC of human pituitary, anterior. Immunohistochemistry of formalin-fixed, paraffin-embedded tissue after heat-induced antigen retrieval.

Requested From:

Japan

Laboratory Reagent For In Vitro Research Use Only

Not for resale without prior written consent from LifeSpan BioSciences, Inc.

Created on 9/23/2014

© 2014 LifeSpan BioSciences