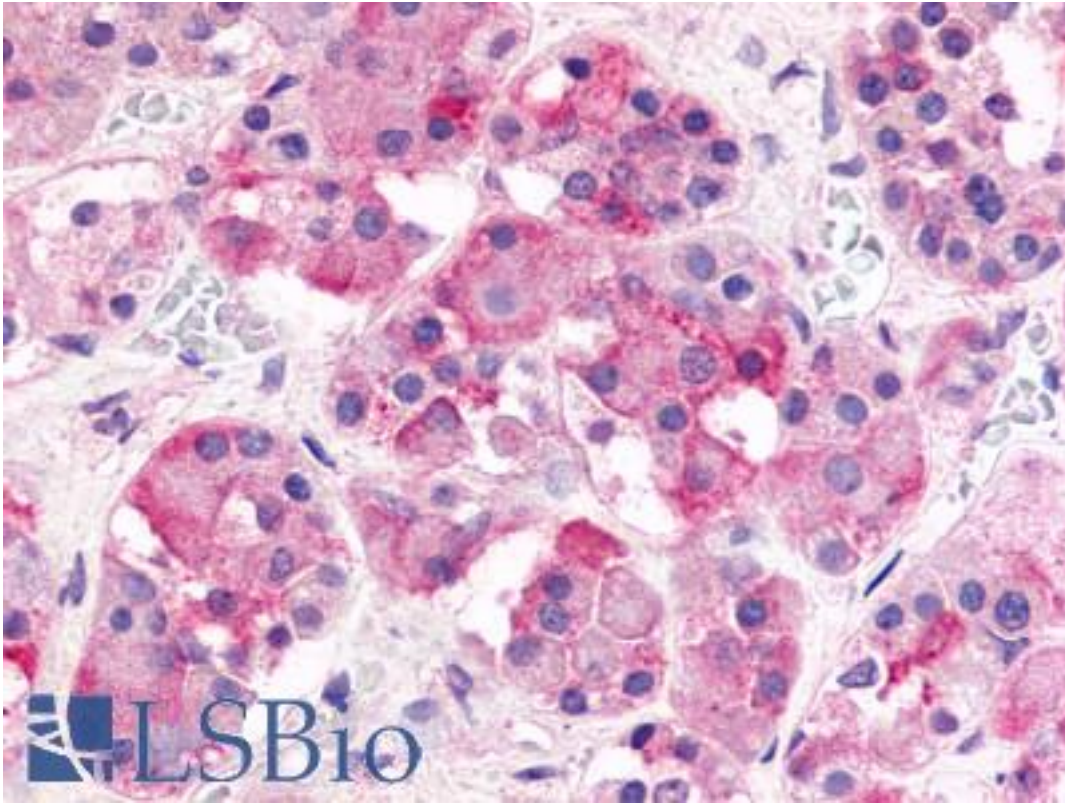


GHRHR Rabbit anti-Human Polyclonal (N-Terminus) Antibody - LS-A834 - LSBio

CatalogID:	LS-A834
Target:	growth hormone releasing hormone receptor (GHRHR)
Synonyms:	GHRHR Antibody, GHRFR Antibody, GRFR Antibody, IGHD1B Antibody, GRF receptor Antibody, GH-releasing hormone receptor Antibody, GHRH receptor Antibody, Ghrh-r Antibody
Family / Subfamily:	GPCR / Growth hormone releasing hormone
Host	GHRHR antibody was produced in Rabbit
Clonality:	Polyclonal
Immunogen Species:	GHRHR antibody was raised against Human
Antigen Type:	Synthetic peptide
Immunogen:	GHRHR antibody was raised against synthetic 18 amino acid peptide from N-terminal extracellular domain of human GHRHR. Percent identity with other species by BLAST analysis: Human, Gorilla (100%); Gibbon, Marmoset, Panda, Dog (94%); Zebu, Bovine (89%); Rabbit, Pig (83%).
Specificity:	Human GHRHR. BLAST analysis of the peptide immunogen showed no homology with other human proteins, except FLJ23588 (50%).
Epitope:	N-Terminus
Reactivity:	Human, Gorilla
Predicted Reactivity:	Gibbon, Monkey, Dog
Purification:	Immunoaffinity purified
Presentation:	PBS, 0.1% sodium azide.
Recommended Storage:	Long term: -70°C; Short term: +4°C
Uses:	IHC - Paraffin (3 µg/ml) (Optimal dilution to be determined by the researcher)
Size:	50 µg
Concentration:	1 mg/ml

Immunohistochemistry Image:



Anti-GHRHR antibody LS-A834 IHC of human pituitary, anterior. Immunohistochemistry of formalin-fixed, paraffin-embedded tissue after heat-induced antigen retrieval.

Requested From:

Japan

Laboratory Reagent For In Vitro Research Use Only

Not for resale without prior written consent from LifeSpan BioSciences, Inc.

Created on 9/23/2014

© 2014 LifeSpan BioSciences