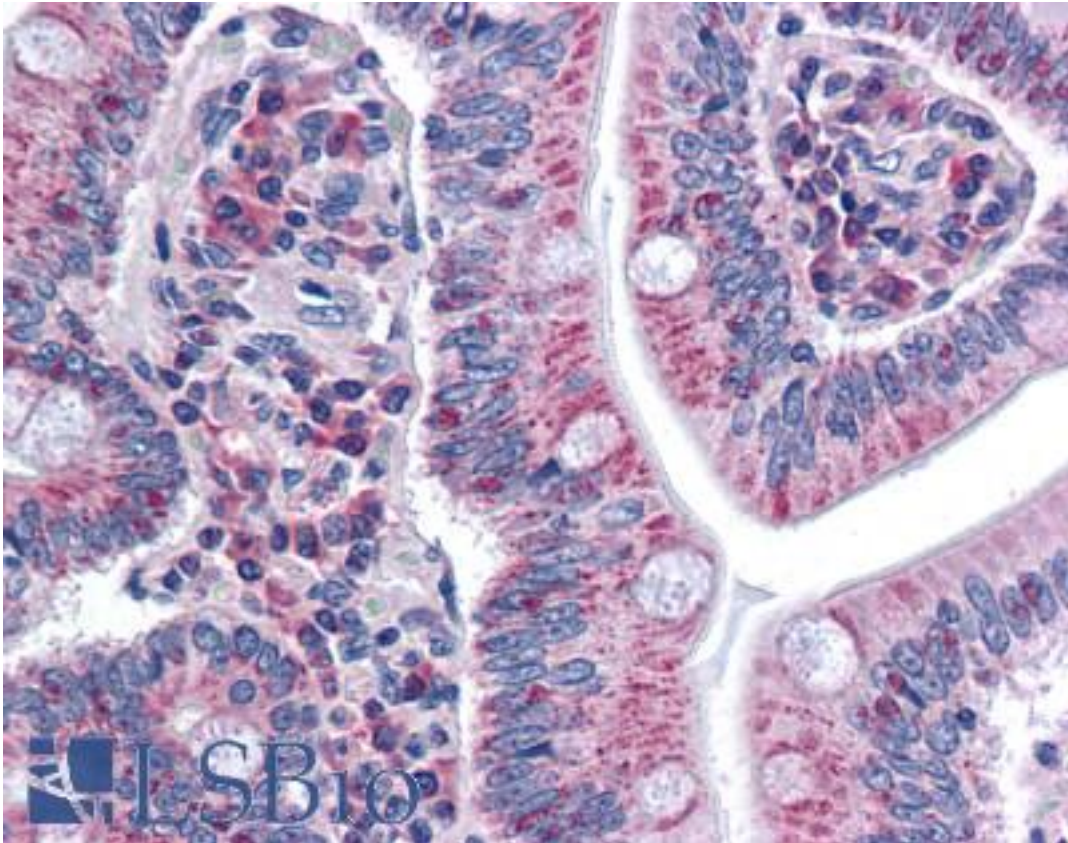


SURF4 Rabbit anti-Human Polyclonal (N-Terminus) Antibody - LS-A8330 - LSBio

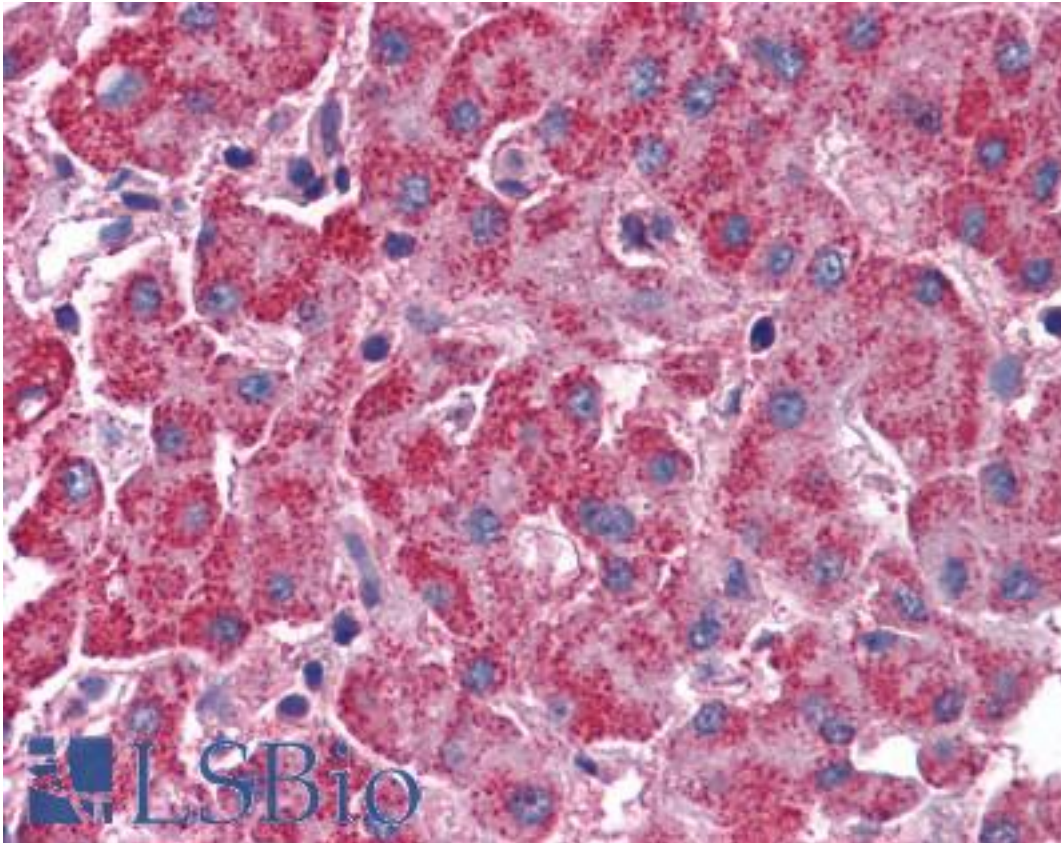
CatalogID:	LS-A8330
Target:	surfeit 4 (SURF4)
Synonyms:	SURF4 Antibody, ERV29 Antibody, Surfeit 4 Antibody, Surfeit locus protein 4 Antibody, SURF-4 Antibody
Host	SURF4 antibody was produced in Rabbit
Clonality:	Polyclonal
Immunogen Species:	SURF4 antibody was raised against Human
Antigen Type:	Synthetic peptide
Immunogen:	SURF4 antibody was raised against synthetic 15 amino acid peptide from N-terminus of human SURF4. Percent identity with other species by BLAST analysis: Human, Gorilla, Orangutan, Gibbon, Monkey, Mouse, Rat, Bovine (100%); Opossum (93%); Turkey, Chicken, Xenopus (87%); Salmon, Stickleback (80%).
Specificity:	Human SURF4. BLAST analysis of the peptide immunogen showed no homology with other human proteins.
Epitope:	N-Terminus
Reactivity:	Human, Gorilla, Orangutan, Gibbon, Monkey, Mouse, Rat, Bovine
Purification:	Immunoaffinity purified
Presentation:	PBS, 0.1% sodium azide.
Recommended Storage:	Long term: -70°C; Short term: +4°C
Uses:	IHC - Paraffin (5 µg/ml) (Optimal dilution to be determined by the researcher)
Size:	50 µg
Concentration:	1 mg/ml

Immunohistochemistry Image:



Anti-SURF4 antibody LS-A8330 IHC of human intestine. Immunohistochemistry of formalin-fixed, paraffin-embedded tissue after heat-induced antigen retrieval.

Immunohistochemistry Image:



Anti-SURF4 antibody LS-A8330 IHC of human liver. Immunohistochemistry of formalin-fixed, paraffin-embedded tissue after heat-induced antigen retrieval.

Requested From:

Japan

Laboratory Reagent For In Vitro Research Use Only

Not for resale without prior written consent from LifeSpan BioSciences, Inc.

Created on 9/23/2014

© 2014 LifeSpan BioSciences