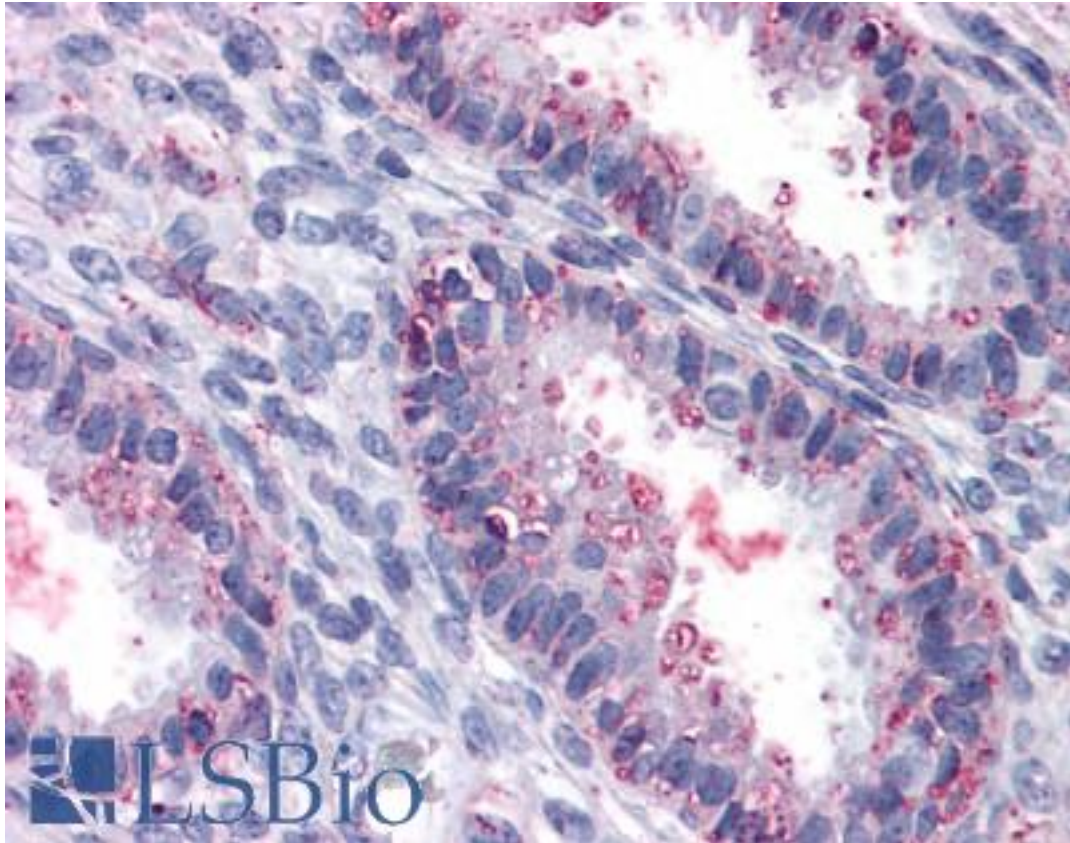


ENTPD2 Rabbit anti-Human Polyclonal (Internal) Antibody - LS-A8327 - LSBio

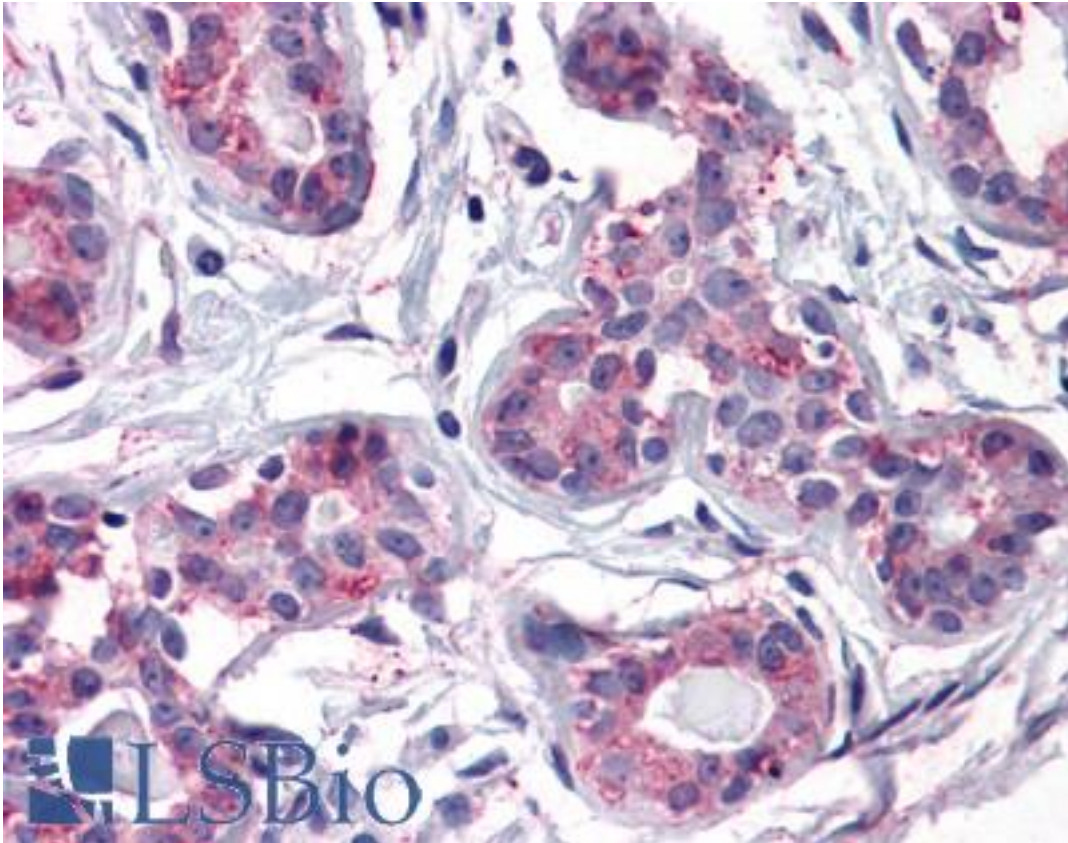
CatalogID:	LS-A8327
Target:	ectonucleoside triphosphate diphosphohydrolase 2 (ENTPD2)
Synonyms:	ENTPD2 Antibody, CD39 antigen-like 1 Antibody, Ecto-ATPDase 2 Antibody, NTPDase 2 Antibody, NTPDase-2 Antibody, CD39L1 Antibody, Ecto-ATP diphosphohydrolase 2 Antibody, Ecto-ATPase 2 Antibody
Host	ENTPD2 antibody was produced in Rabbit
Clonality:	Polyclonal
Immunogen Species:	ENTPD2 antibody was raised against Human
Antigen Type:	Synthetic peptide
Immunogen:	ENTPD2 antibody was raised against synthetic 14 amino acid peptide from internal region of human ENTPD2. Percent identity with other species by BLAST analysis: Human, Chimpanzee, Gibbon, Monkey (100%); Gorilla, Bovine, Horse (93%); Galago, Elephant, Guinea pig (86%).
Specificity:	Human ENTPD2. BLAST analysis of the peptide immunogen showed no homology with other human proteins.
Epitope:	Internal
Reactivity:	Human, Chimpanzee, Gibbon, Monkey
Predicted Reactivity:	Gorilla, Bovine, Horse
Purification:	Immunoaffinity purified
Presentation:	PBS, 0.1% sodium azide.
Recommended Storage:	Long term: -70°C; Short term: +4°C
Uses:	IHC - Paraffin (15 - 20 µg/ml) (Optimal dilution to be determined by the researcher)
Size:	50 µg
Concentration:	0.6 mg/ml

Immunohistochemistry Image:



Anti-ENTPD2 antibody LS-A8327 IHC of human uterus. Immunohistochemistry of formalin-fixed, paraffin-embedded tissue after heat-induced antigen retrieval.

Immunohistochemistry Image:



Anti-ENTPD2 antibody LS-A8327 IHC of human breast. Immunohistochemistry of formalin-fixed, paraffin-embedded tissue after heat-induced antigen retrieval.

Requested From:

Japan

Laboratory Reagent For In Vitro Research Use Only

Not for resale without prior written consent from LifeSpan BioSciences, Inc.

Created on 9/23/2014

© 2014 LifeSpan BioSciences