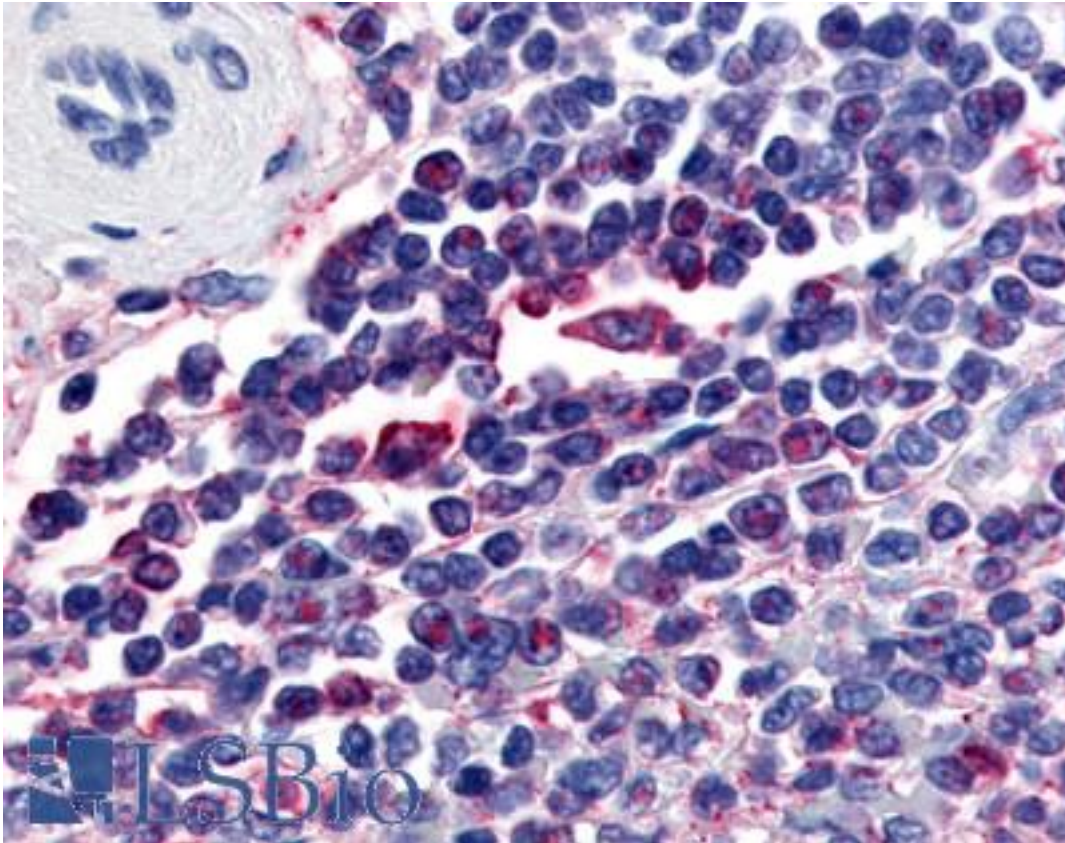


**ATRN / Attractin Rabbit anti-Human Polyclonal (Internal) Antibody - LS-A8316 - LSBio**

<b>CatalogID:</b>	LS-A8316
<b>Target:</b>	attractin (ATRN)
<b>Synonyms:</b>	ATRN Antibody, Attractin-2 Antibody, Attractin Antibody, DPPT-L Antibody, KIAA0548 Antibody, Mahogany protein Antibody, MGCA Antibody, Mahogany homolog Antibody
<b>Host</b>	ATRN antibody was produced in Rabbit
<b>Clonality:</b>	Polyclonal
<b>Immunogen Species:</b>	ATRN / Attractin antibody was raised against Human
<b>Antigen Type:</b>	Synthetic peptide
<b>Immunogen:</b>	ATRN / Attractin antibody was raised against synthetic 16 amino acid peptide from internal region of human ATRN / Attractin. Percent identity with other species by BLAST analysis: Human, Gorilla (100%); Gibbon (94%); Monkey, Bovine, Pig (88%); Marmoset, Rat, Bat, Hamster (81%).
<b>Specificity:</b>	Human ATRN / Attractin. BLAST analysis of the peptide immunogen showed no homology with other human proteins, except KCTD19 (50%).
<b>Epitope:</b>	Internal
<b>Reactivity:</b>	Human, Gorilla
<b>Predicted Reactivity:</b>	Gibbon
<b>Purification:</b>	Immunoaffinity purified
<b>Presentation:</b>	PBS, 0.1% sodium azide.
<b>Recommended Storage:</b>	Long term: -70°C; Short term: +4°C
<b>Usage Summary:</b>	Immunohistochemistry: LS-A8316 was validated for use in immunohistochemistry on a panel of 21 formalin-fixed, paraffin-embedded (FFPE) human tissues after heat induced antigen retrieval in pH 6.0 citrate buffer. After incubation with the primary antibody, slides were incubated with biotinylated secondary antibody, followed by alkaline phosphatase-streptavidin and chromogen. The stained slides were evaluated by a pathologist to confirm staining specificity. The optimal working concentration for LS-A8316 was determined to be 20 ug/ml.
<b>Uses:</b>	IHC - Paraffin (20 µg/ml) (Optimal dilution to be determined by the researcher)
<b>Size:</b>	50 µg
<b>Concentration:</b>	1 mg/ml

**Immunohistochemistry Image:**



Anti-ATRN / Attractin antibody LS-A8316 IHC of human spleen. Immunohistochemistry of formalin-fixed, paraffin-embedded tissue after heat-induced antigen retrieval.

**Requested From:**

Japan

Laboratory Reagent For In Vitro Research Use Only

Not for resale without prior written consent from LifeSpan BioSciences, Inc.

Created on 9/23/2014

© 2014 LifeSpan BioSciences