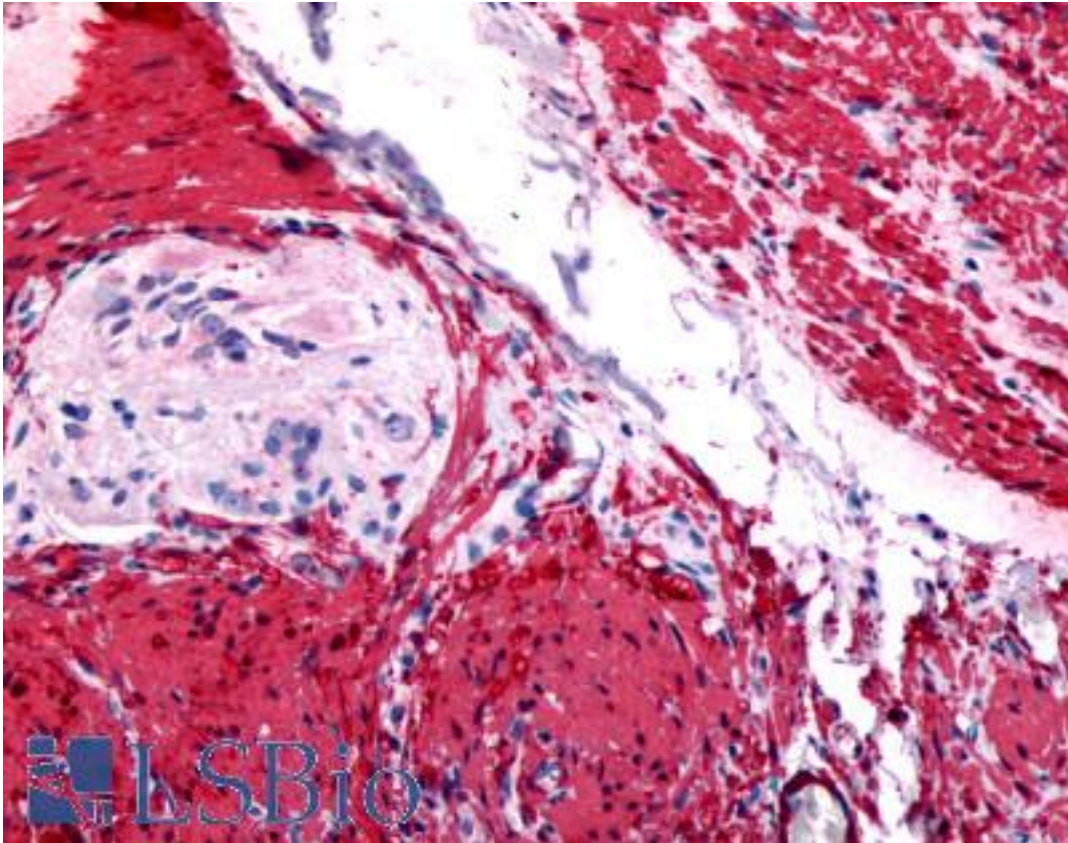


GRPR Rabbit anti-Human Polyclonal (Cytoplasmic Domain) Antibody - LS-A831 - LSBio

CatalogID:	LS-A831
Target:	gastrin-releasing peptide receptor (GRPR)
Synonyms:	GRPR Antibody, GRP-R Antibody, Bombesin BB2 receptor Antibody, GRP receptor Antibody, Grp/bombesin receptor Antibody
Family / Subfamily:	GPCR / Bombesin
Host	GRPR antibody was produced in Rabbit
Clonality:	Polyclonal
Immunogen Species:	GRPR antibody was raised against Human
Antigen Type:	Synthetic peptide
Immunogen:	GRPR antibody was raised against synthetic 17 amino acid peptide from 3rd cytoplasmic domain of human GRPR. Percent identity with other species by BLAST analysis: Human, Gorilla, Gibbon, Monkey, Marmoset, Mouse, Rat, Hamster, Elephant, Bovine, Dog, Bat, Pig (100%); Panda, Rabbit, Opossum (94%); Horse (88%); Turkey, Chicken, Lizard (82%).
Specificity:	Human GRPR. BLAST analysis of the peptide immunogen showed no homology with other human proteins, except ADAM28 (41%).
Epitope:	Cytoplasmic Domain
Reactivity:	Human, Gorilla, Gibbon, Monkey, Mouse, Rat, Bat, Bovine, Dog, Hamster, Pig
Predicted Reactivity:	Rabbit
Purification:	Immunoaffinity purified
Presentation:	PBS, 0.1% sodium azide.
Recommended Storage:	Long term: -70°C; Short term: +4°C
Uses:	IHC - Paraffin (5 µg/ml), ICC (Optimal dilution to be determined by the researcher)
Size:	50 µg
Concentration:	0.7 mg/ml

Immunohistochemistry Image:



Anti-GRPR antibody LS-A831 IHC of human colon. Immunohistochemistry of formalin-fixed, paraffin-embedded tissue after heat-induced antigen retrieval.

Requested From:

Japan

Laboratory Reagent For In Vitro Research Use Only

Not for resale without prior written consent from LifeSpan BioSciences, Inc.

Created on 9/23/2014

© 2014 LifeSpan BioSciences