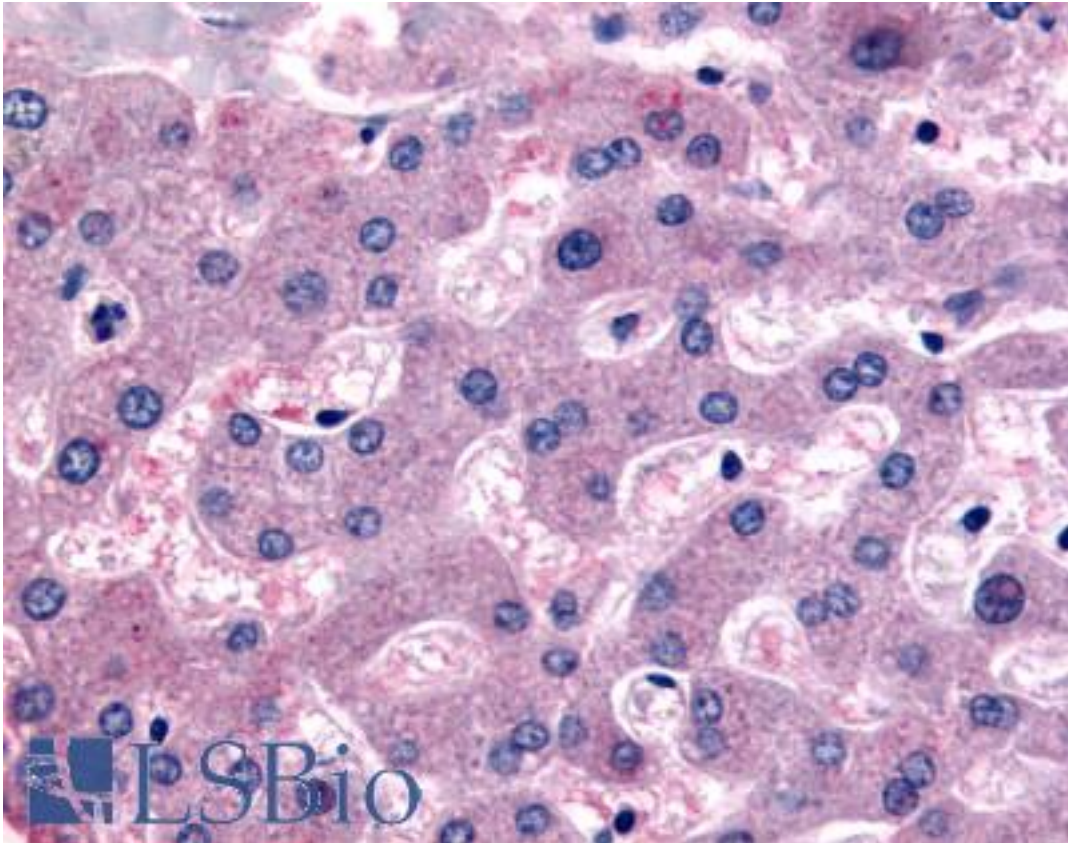


**DPP9 Rabbit anti-Human Polyclonal (Internal) Antibody - LS-A8308 - LSBio**

|                              |   |
|------------------------------|---|
| <b>CatalogID:</b>            | LS-A8308  |
| <b>Target:</b>               | dipeptidyl-peptidase 9 (DPP9)   |
| <b>Synonyms:</b>             | DPP9 Antibody, Dipeptidyl-peptidase 9 Antibody, DPRP-2 Antibody, Dipeptidyl peptidase IX Antibody, DP9 Antibody, DPP IX Antibody, DPLP9 Antibody, Dipeptidyl peptidase 9 Antibody, Dipeptidylpeptidase 9 Antibody, DPRP2 Antibody                                     |
| <b>Family / Subfamily:</b>   | Protease / Serine S9B   |
| <b>Host</b>                  | DPP9 antibody was produced in Rabbit  |
| <b>Clonality:</b>            | Polyclonal  |
| <b>Immunogen Species:</b>    | DPP9 antibody was raised against Human  |
| <b>Antigen Type:</b>         | Synthetic peptide   |
| <b>Immunogen:</b>            | DPP9 antibody was raised against synthetic 14 amino acid peptide from internal region of human DPP9. Percent identity with other species by BLAST analysis: Human, Gorilla, Monkey, Mouse, Hamster (100%); Marmoset, Elephant, Bovine, Bat (93%); Panda, Horse (86%). |
| <b>Specificity:</b>          | Human DPP9. BLAST analysis of the peptide immunogen showed no homology with other human proteins.   |
| <b>Epitope:</b>              | Internal  |
| <b>Reactivity:</b>           | Human, Gorilla, Mouse, Hamster  |
| <b>Predicted Reactivity:</b> | Monkey, Bat, Bovine   |
| <b>Purification:</b>         | Immunoaffinity purified   |
| <b>Presentation:</b>         | PBS, 0.1% sodium azide.   |
| <b>Recommended Storage:</b>  | Long term: -70°C; Short term: +4°C  |
| <b>Uses:</b>                 | IHC - Paraffin (10 µg/ml) (Optimal dilution to be determined by the researcher)   |
| <b>Size:</b>                 | 50 µg   |
| <b>Concentration:</b>        | 1 mg/ml   |

**Immunohistochemistry Image:**



Anti-DPP9 antibody LS-A8308 IHC of human liver. Immunohistochemistry of formalin-fixed, paraffin-embedded tissue after heat-induced antigen retrieval.

**Requested From:**

Japan

Laboratory Reagent For In Vitro Research Use Only

Not for resale without prior written consent from LifeSpan BioSciences, Inc.

Created on 9/23/2014

© 2014 LifeSpan BioSciences