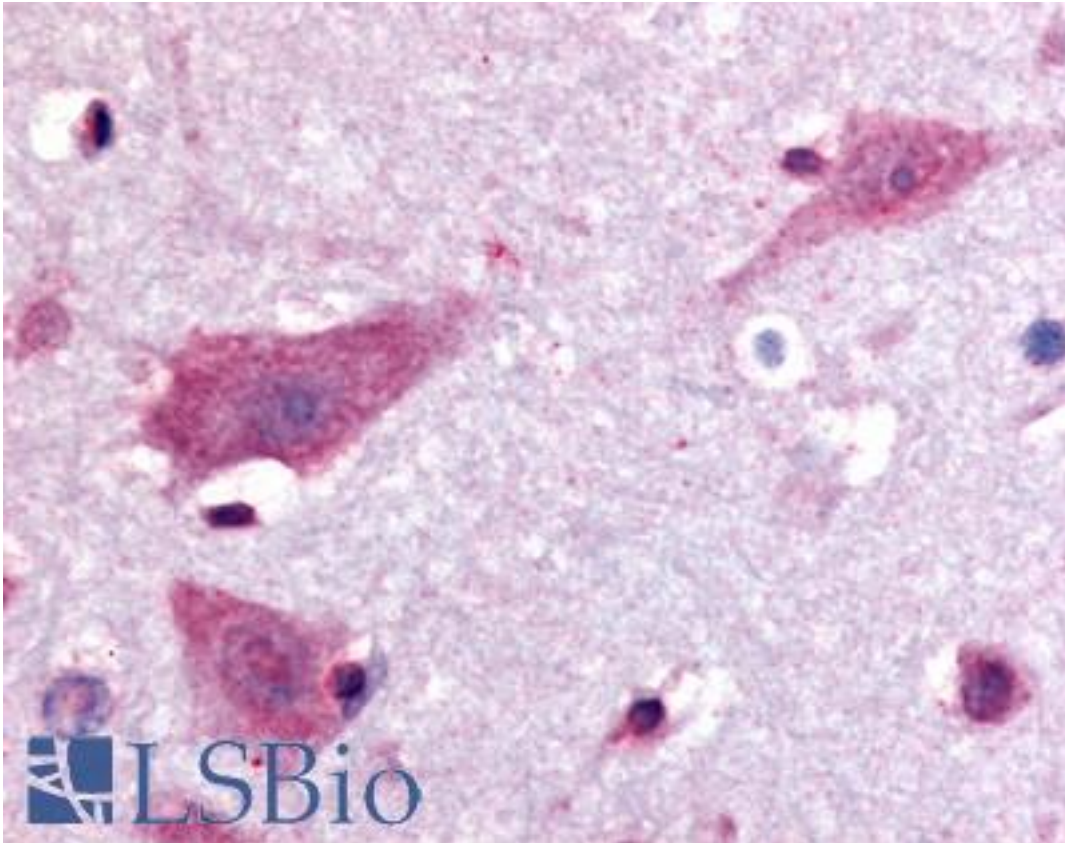


Dipeptidylpeptidase 10 / DPP10 Rabbit anti-Human Polyclonal (Extracellular Domain) Antibody - LS-A8304 - LSBio	
CatalogID:	LS-A8304
Target:	dipeptidyl-peptidase 10 (non-functional) (DPP10)
Synonyms:	DPP10 Antibody, Dipeptidyl peptidase X Antibody, Dipeptidyl-peptidase 10 Antibody, Dipeptidylpeptidase 10 Antibody, DPL2 Antibody, DPRP-3 Antibody, DPRP3 Antibody, Dipeptidyl peptidase 10 Antibody, DPPY Antibody, KIAA1492 Antibody, DPP X Antibody
Family / Subfamily:	Protease / Serine S9B
Host	DPP10 antibody was produced in Rabbit
Clonality:	Polyclonal
Immunogen Species:	Dipeptidylpeptidase 10 / DPP10 antibody was raised against Human
Antigen Type:	Synthetic peptide
Immunogen:	Dipeptidylpeptidase 10 / DPP10 antibody was raised against synthetic 15 amino acid peptide from extracellular domain of human DPP10. Percent identity with other species by BLAST analysis: Human, Gorilla, Monkey, Marmoset, Bovine, Panda, Horse, Rabbit, Pig (100%); Gibbon, Dog (93%); Bat, Elephant (87%).
Specificity:	Human DPP10. BLAST analysis of the peptide immunogen showed no homology with other human proteins.
Epitope:	Extracellular Domain
Reactivity:	Human, Gorilla, Monkey, Bovine, Horse, Pig, Rabbit
Predicted Reactivity:	Gibbon, Dog
Purification:	Immunoaffinity purified
Presentation:	PBS, 0.1% sodium azide.
Recommended Storage:	Long term: -70°C; Short term: +4°C
Usage Summary:	Immunohistochemistry: LS-A8304 was validated for use in immunohistochemistry on a panel of 21 formalin-fixed, paraffin-embedded (FFPE) human tissues after heat induced antigen retrieval in pH 6.0 citrate buffer. After incubation with the primary antibody, slides were incubated with biotinylated secondary antibody, followed by alkaline phosphatase-streptavidin and chromogen. The stained slides were evaluated by a pathologist to confirm staining specificity. The optimal working concentration for LS-A8304 was determined to be 20 ug/ml.
Uses:	IHC - Paraffin (20 µg/ml) (Optimal dilution to be determined by the researcher)
Size:	50 µg
Concentration:	1 mg/ml

Immunohistochemistry Image:



Anti-DPP10 antibody LS-A8304 IHC of human brain, neurons. Immunohistochemistry of formalin-fixed, paraffin-embedded tissue after heat-induced antigen retrieval.

Requested From:

Japan

Laboratory Reagent For In Vitro Research Use Only

Not for resale without prior written consent from LifeSpan BioSciences, Inc.

Created on 9/23/2014

© 2014 LifeSpan BioSciences