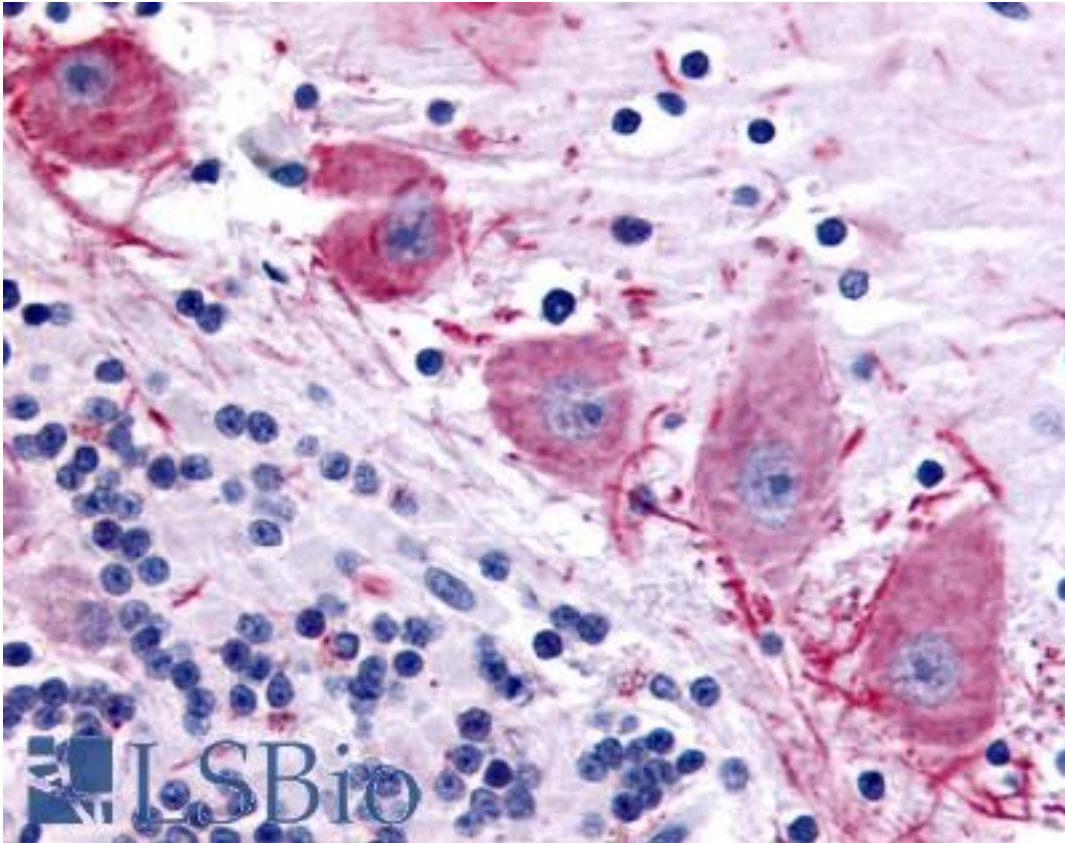


Dipeptidylpeptidase 10 / DPP10 Rabbit anti-Human Polyclonal (Extracellular Domain) Antibody - LS-A8302 - LSBio	
<b>CatalogID:</b>	LS-A8302
<b>Target:</b>	dipeptidyl-peptidase 10 (non-functional) (DPP10)
<b>Synonyms:</b>	DPP10 Antibody, Dipeptidyl peptidase X Antibody, Dipeptidyl-peptidase 10 Antibody, Dipeptidylpeptidase 10 Antibody, DPL2 Antibody, DPRP-3 Antibody, DPRP3 Antibody, Dipeptidyl peptidase 10 Antibody, DPPY Antibody, KIAA1492 Antibody, DPP X Antibody
<b>Family / Subfamily:</b>	Protease / Serine S9B
<b>Host</b>	DPP10 antibody was produced in Rabbit
<b>Clonality:</b>	Polyclonal
<b>Immunogen Species:</b>	Dipeptidylpeptidase 10 / DPP10 antibody was raised against Human
<b>Antigen Type:</b>	Synthetic peptide
<b>Immunogen:</b>	Dipeptidylpeptidase 10 / DPP10 antibody was raised against synthetic 14 amino acid peptide from extracellular domain of human DPP10. Percent identity with other species by BLAST analysis: Human, Gorilla, Gibbon, Monkey, Marmoset, Elephant, Panda, Bovine, Dog, Bat, Horse, Rabbit, Pig (100%); Mouse, Rat, Hamster (93%); Opossum, Chicken (86%).
<b>Specificity:</b>	Human DPP10. BLAST analysis of the peptide immunogen showed no homology with other human proteins.
<b>Epitope:</b>	Extracellular Domain
<b>Reactivity:</b>	Human, Gorilla, Gibbon, Monkey, Bat, Bovine, Dog, Horse, Pig, Rabbit
<b>Predicted Reactivity:</b>	Mouse, Rat, Hamster
<b>Purification:</b>	Immunoaffinity purified
<b>Presentation:</b>	PBS, 0.1% sodium azide.
<b>Recommended Storage:</b>	Long term: -70°C; Short term: +4°C
<b>Uses:</b>	IHC - Paraffin (10 µg/ml) (Optimal dilution to be determined by the researcher)
<b>Size:</b>	50 µg
<b>Concentration:</b>	1 mg/ml

**Immunohistochemistry Image:**



Anti-DPP10 antibody LS-A8302 IHC of human brain, cerebellum Purkinje neurons. Immunohistochemistry of formalin-fixed, paraffin-embedded tissue after heat-induced antigen retrieval.

**Requested From:**

Japan

Laboratory Reagent For In Vitro Research Use Only

Not for resale without prior written consent from LifeSpan BioSciences, Inc.

Created on 9/23/2014

© 2014 LifeSpan BioSciences