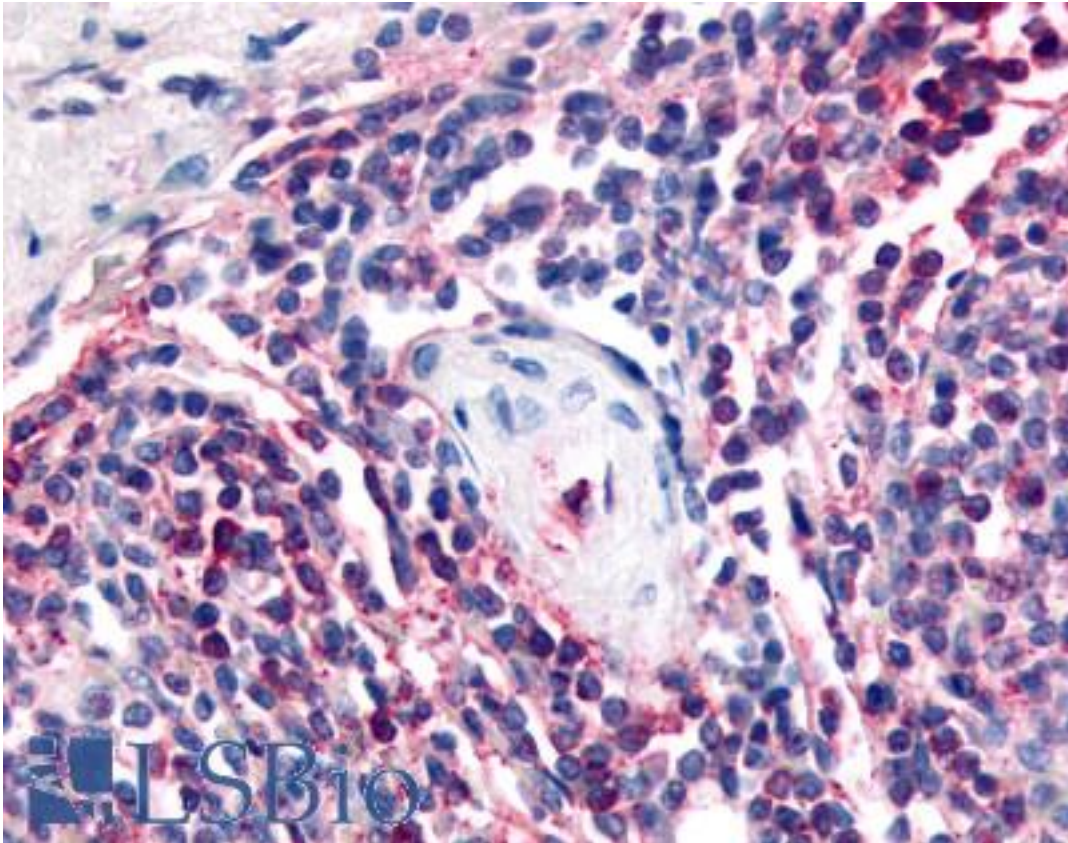


ATRN / Attractin Rabbit anti-Human Polyclonal (Internal) Antibody - LS-A8293 - LSBio	
CatalogID:	LS-A8293
Target:	attractin (ATRN)
Synonyms:	ATRN Antibody, Attractin-2 Antibody, Attractin Antibody, DPPT-L Antibody, KIAA0548 Antibody, Mahogany protein Antibody, MGCA Antibody, Mahogany homolog Antibody
Host	ATRN antibody was produced in Rabbit
Clonality:	Polyclonal
Immunogen Species:	ATRN / Attractin antibody was raised against Human
Antigen Type:	Synthetic peptide
Immunogen:	ATRN / Attractin antibody was raised against synthetic 17 amino acid peptide from internal region of human ATRN / Attractin. Percent identity with other species by BLAST analysis: Human, Gorilla, Gibbon, Monkey, Marmoset, Mouse, Rat, Hamster, Elephant, Panda, Dog, Bat, Bovine, Horse, Rabbit, Pig, Zebrafish (100%); Opossum, Turkey, Chicken, Platypus, Xenopus (94%); Stickleback (88%).
Specificity:	Human ATRN / Attractin. BLAST analysis of the peptide immunogen showed no homology with other human proteins.
Epitope:	Internal
Reactivity:	Human, Gorilla, Gibbon, Monkey, Mouse, Rat, Bat, Bovine, Dog, Hamster, Horse, Pig, Rabbit, Zebrafish
Predicted Reactivity:	Chicken, Xenopus
Purification:	Immunoaffinity purified
Presentation:	PBS, 0.1% sodium azide.
Recommended Storage:	Long term: -70°C; Short term: +4°C
Uses:	IHC - Paraffin (10 µg/ml) (Optimal dilution to be determined by the researcher)
Size:	50 µg
Concentration:	1 mg/ml

Immunohistochemistry Image:



Anti-ATRN / Attractin antibody LS-A8293 IHC of human spleen. Immunohistochemistry of formalin-fixed, paraffin-embedded tissue after heat-induced antigen retrieval.

Requested From:

Japan

Laboratory Reagent For In Vitro Research Use Only

Not for resale without prior written consent from LifeSpan BioSciences, Inc.

Created on 9/23/2014

© 2014 LifeSpan BioSciences