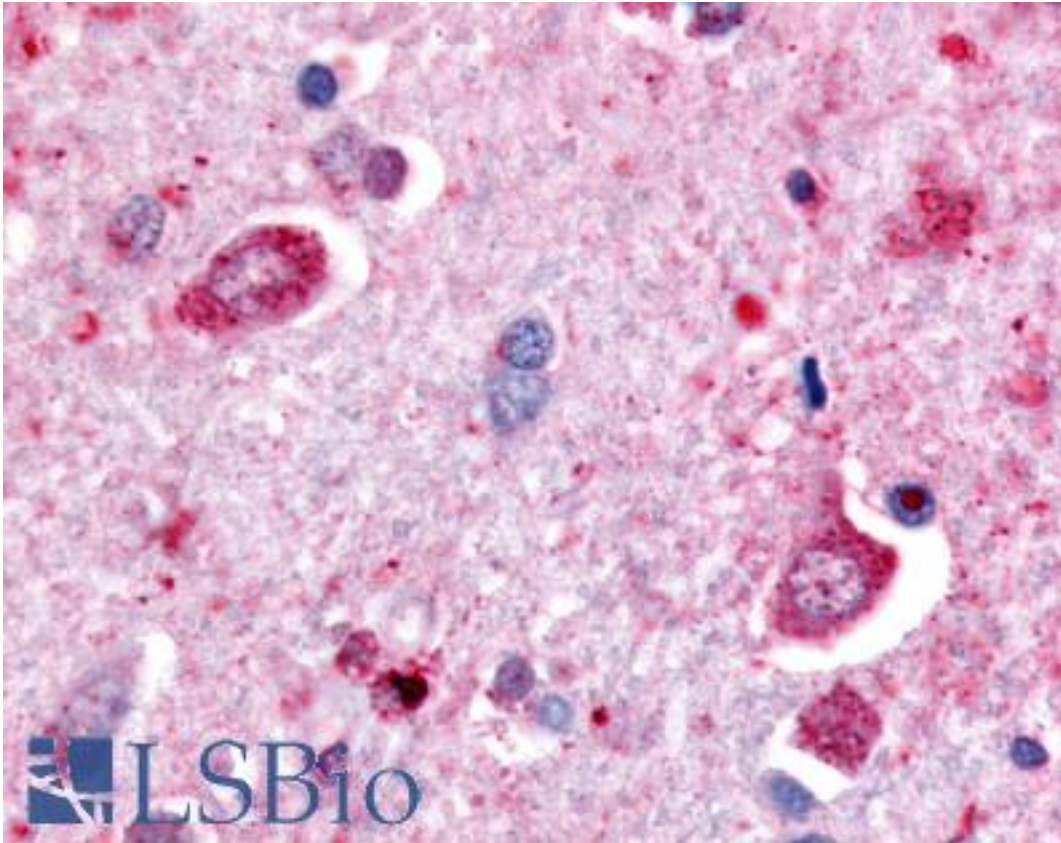


DPP6 / Dipeptidylpeptidase 6 Rabbit anti-Human Polyclonal (Extracellular Domain) Antibody - LS-A8279 - LSBio	
CatalogID:	LS-A8279
Target:	dipeptidyl-peptidase 6 (DPP6)
Synonyms:	DPP6 Antibody, Dipeptidylpeptidase VI Antibody, Dipeptidyl peptidase 6 Antibody, Dipeptidyl peptidase VI Antibody, Dipeptidyl-peptidase 6 Antibody, Dipeptidylpeptidase 6 Antibody, DPP VI Antibody, DPPX Antibody, VF2 Antibody
Family / Subfamily:	Protease / Serine S9B
Host	DPP6 antibody was produced in Rabbit
Clonality:	Polyclonal
Immunogen Species:	DPP6 / Dipeptidylpeptidase 6 antibody was raised against Human
Antigen Type:	Synthetic peptide
Immunogen:	DPP6 / Dipeptidylpeptidase 6 antibody was raised against synthetic 18 amino acid peptide from extracellular domain of human DPP6. Percent identity with other species by BLAST analysis: Human, Chimpanzee, Gorilla, Gibbon, Monkey, Marmoset, Mouse, Rat, Elephant, Panda, Bovine, Horse, Rabbit, Xenopus (100%); Pig, Opossum, Platypus, Lizard (94%); Turkey, Chicken, Zebrafish (89%); Stickleback, Pufferfish (83%).
Specificity:	Human DPP6. BLAST analysis of the peptide immunogen showed no homology with other human proteins.
Epitope:	Extracellular Domain
Reactivity:	Human, Chimpanzee, Gorilla, Gibbon, Monkey, Mouse, Rat, Bovine, Horse, Rabbit, Xenopus
Predicted Reactivity:	Pig
Purification:	Immunoaffinity purified
Presentation:	PBS, 0.1% sodium azide.
Recommended Storage:	Long term: -70°C; Short term: +4°C
Uses:	IHC - Paraffin (20 µg/ml) (Optimal dilution to be determined by the researcher)
Size:	50 µg
Concentration:	0.4 mg/ml

Immunohistochemistry Image:



Anti-DPP6 antibody LS-A8279 IHC of human brain, neurons. Immunohistochemistry of formalin-fixed, paraffin-embedded tissue after heat-induced antigen retrieval.

Requested From:

Japan

Laboratory Reagent For In Vitro Research Use Only

Not for resale without prior written consent from LifeSpan BioSciences, Inc.

Created on 9/23/2014

© 2014 LifeSpan BioSciences