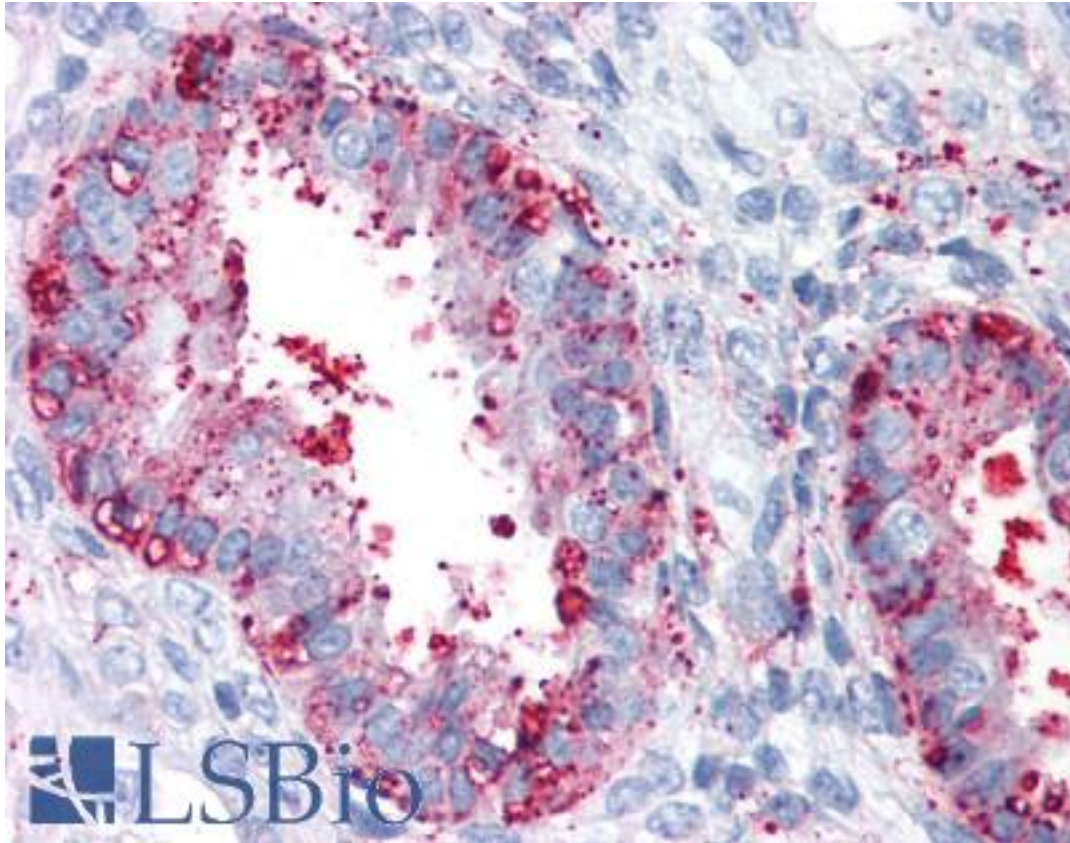


ENTPD2 Rabbit anti-Human Polyclonal (Internal) Antibody - LS-A8275 - LSBio

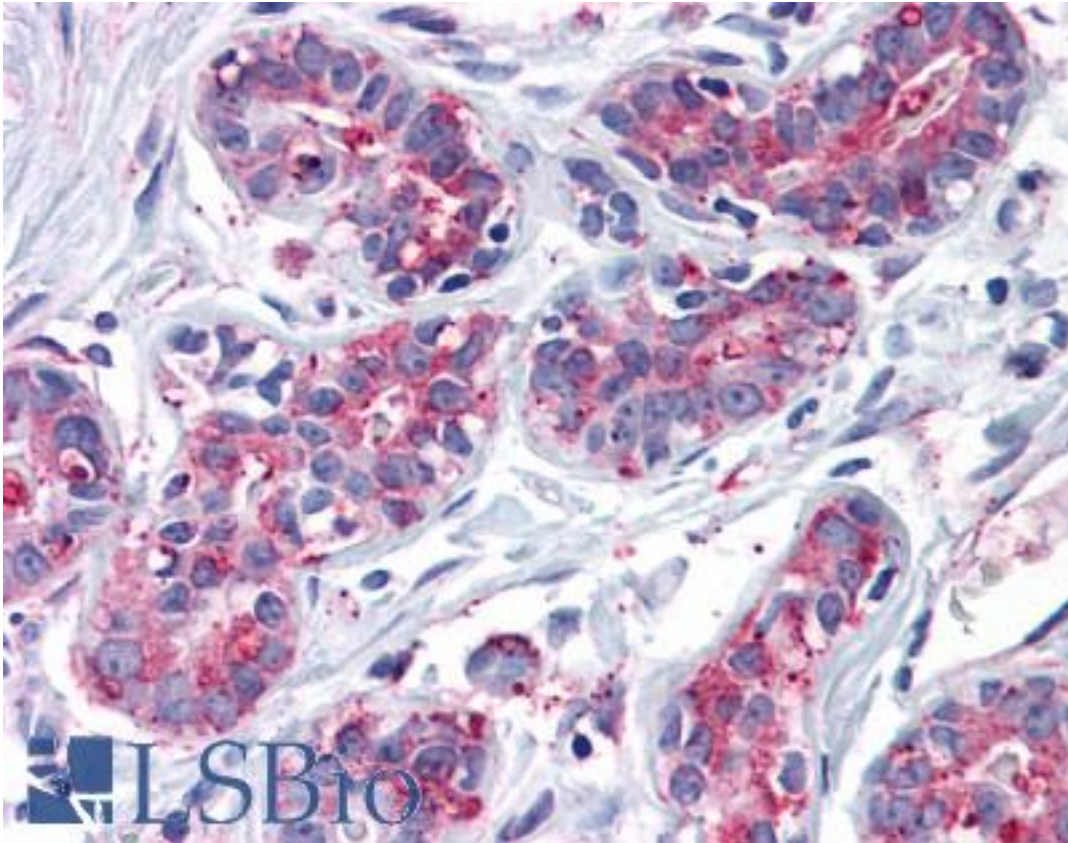
<b>CatalogID:</b>	LS-A8275
<b>Target:</b>	ectonucleoside triphosphate diphosphohydrolase 2 (ENTPD2)
<b>Synonyms:</b>	ENTPD2 Antibody, CD39 antigen-like 1 Antibody, Ecto-ATPDase 2 Antibody, NTPDase 2 Antibody, NTPDase-2 Antibody, CD39L1 Antibody, Ecto-ATP diphosphohydrolase 2 Antibody, Ecto-ATPase 2 Antibody
<b>Host</b>	ENTPD2 antibody was produced in Rabbit
<b>Clonality:</b>	Polyclonal
<b>Immunogen Species:</b>	ENTPD2 antibody was raised against Human
<b>Antigen Type:</b>	Synthetic peptide
<b>Immunogen:</b>	ENTPD2 antibody was raised against synthetic 17 amino acid peptide from internal region of human ENTPD2. Percent identity with other species by BLAST analysis: Human, Gorilla (100%); Gibbon, Monkey, Panda, Dog, Horse (94%); Marmoset, Mouse, Rat, Hamster, Elephant, Bovine (88%); Opossum, Xenopus (82%).
<b>Specificity:</b>	Human ENTPD2. BLAST analysis of the peptide immunogen showed no homology with other human proteins, except ENTPD1 (65%).
<b>Epitope:</b>	Internal
<b>Reactivity:</b>	Human, Gorilla
<b>Predicted Reactivity:</b>	Gibbon, Monkey, Dog, Horse
<b>Purification:</b>	Immunoaffinity purified
<b>Presentation:</b>	PBS, 0.1% sodium azide.
<b>Recommended Storage:</b>	Long term: -70°C; Short term: +4°C
<b>Uses:</b>	IHC - Paraffin (15 - 20 µg/ml) (Optimal dilution to be determined by the researcher)
<b>Size:</b>	50 µg
<b>Concentration:</b>	1 mg/ml

**Immunohistochemistry Image:**



Anti-ENTPD2 antibody LS-A8275 IHC of human uterus. Immunohistochemistry of formalin-fixed, paraffin-embedded tissue after heat-induced antigen retrieval.

**Immunohistochemistry Image:**



Anti-ENTPD2 antibody LS-A8275 IHC of human breast. Immunohistochemistry of formalin-fixed, paraffin-embedded tissue after heat-induced antigen retrieval.

**Requested From:**

Japan

Laboratory Reagent For In Vitro Research Use Only

Not for resale without prior written consent from LifeSpan BioSciences, Inc.

Created on 9/23/2014

© 2014 LifeSpan BioSciences