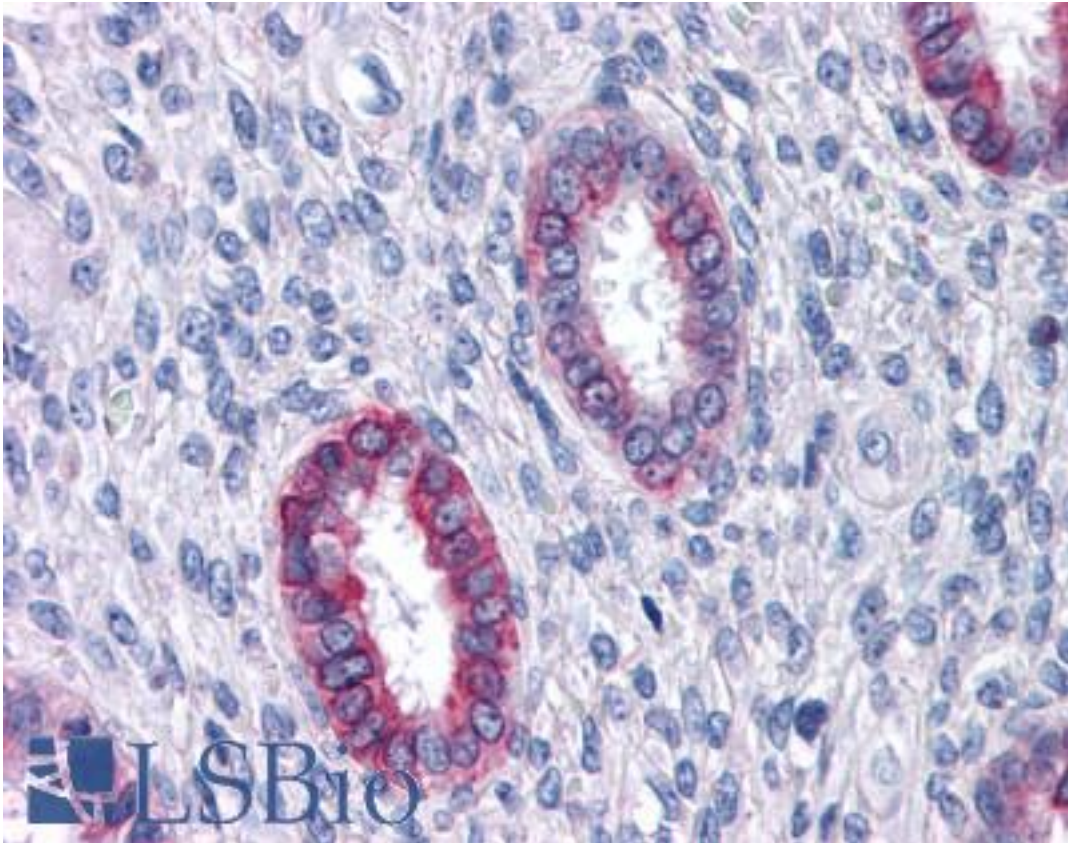


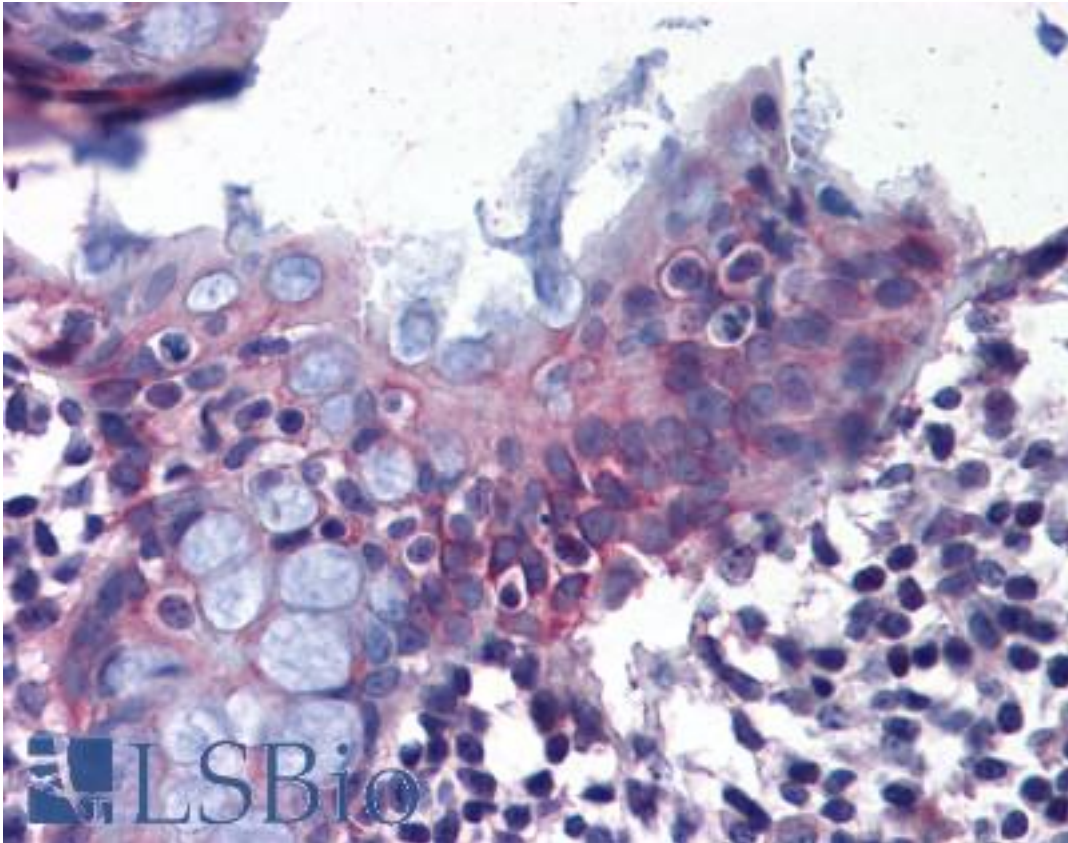
Renal Dipeptidase / DPEP1 Rabbit anti-Human Polyclonal (Internal) Antibody - LS-A8268 - LSBio	
CatalogID:	LS-A8268
Target:	dipeptidase 1 (renal) (DPEP1)
Synonyms:	DPEP1 Antibody, Dipeptidase 1 (renal) Antibody, Dehydropeptidase-I Antibody, Dipeptidase 1 Antibody, HRDP Antibody, Microsomal dipeptidase Antibody, Renal dipeptidase Antibody, RDP Antibody
Family / Subfamily:	Exopeptidase / Metallopeptidase M19
Host	DPEP1 antibody was produced in Rabbit
Clonality:	Polyclonal
Immunogen Species:	Renal Dipeptidase / DPEP1 antibody was raised against Human
Antigen Type:	Synthetic peptide
Immunogen:	Renal Dipeptidase / DPEP1 antibody was raised against synthetic 14 amino acid peptide from internal region of human DPEP1. Percent identity with other species by BLAST analysis: Human (100%); Gorilla, Gibbon, Monkey (93%); Panda, Rabbit, Horse (86%).
Specificity:	Human DPEP1. BLAST analysis of the peptide immunogen showed no homology with other human proteins.
Epitope:	Internal
Reactivity:	Human
Predicted Reactivity:	Gorilla, Gibbon, Monkey
Purification:	Immunoaffinity purified
Presentation:	PBS, 0.1% sodium azide.
Recommended Storage:	Long term: -70°C; Short term: +4°C
Uses:	IHC - Paraffin (15 µg/ml) (Optimal dilution to be determined by the researcher)
Size:	50 µg
Concentration:	1 mg/ml

Immunohistochemistry Image:



Anti-DPEP1 antibody LS-A8268 IHC of human uterus. Immunohistochemistry of formalin-fixed, paraffin-embedded tissue after heat-induced antigen retrieval.

Immunohistochemistry Image:



Anti-DPEP1 antibody LS-A8268 IHC of human colon. Immunohistochemistry of formalin-fixed, paraffin-embedded tissue after heat-induced antigen retrieval.

Requested From:

Japan

Laboratory Reagent For In Vitro Research Use Only

Not for resale without prior written consent from LifeSpan BioSciences, Inc.

Created on 9/23/2014

© 2014 LifeSpan BioSciences