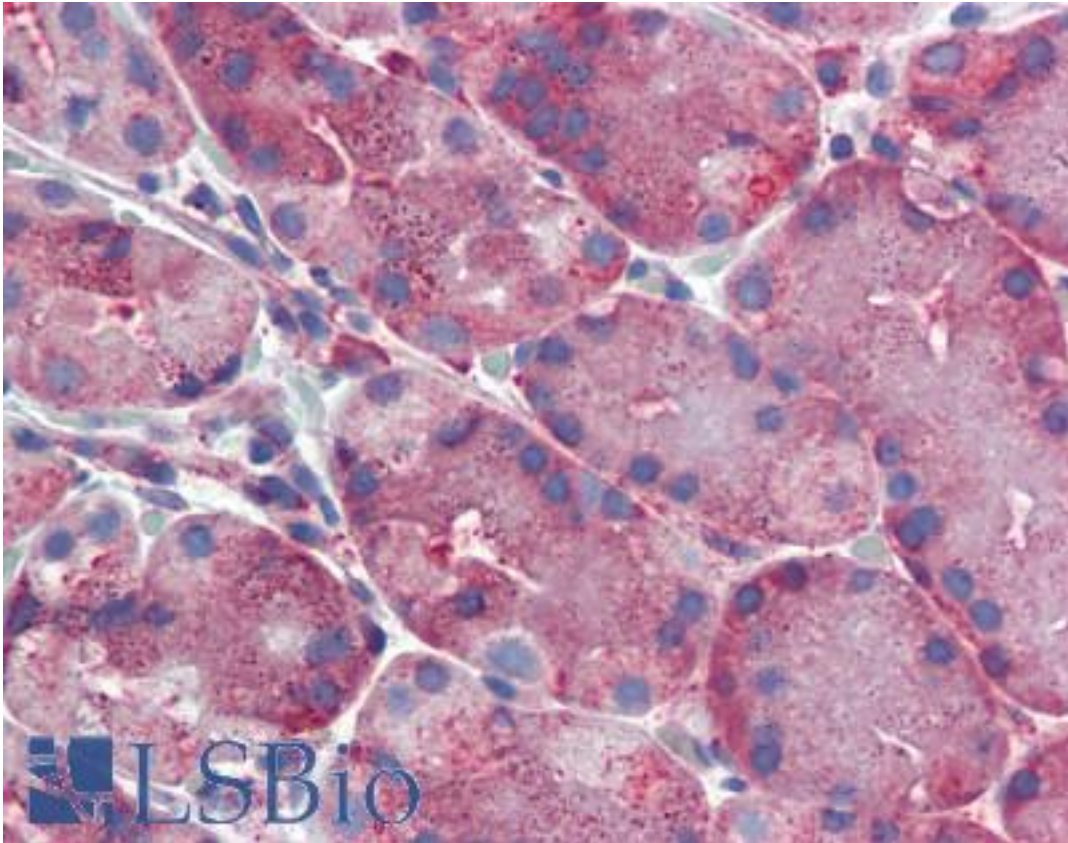


ERP44 Rabbit anti-Human Polyclonal (C-Terminus) Antibody - LS-A8261 - LSBio

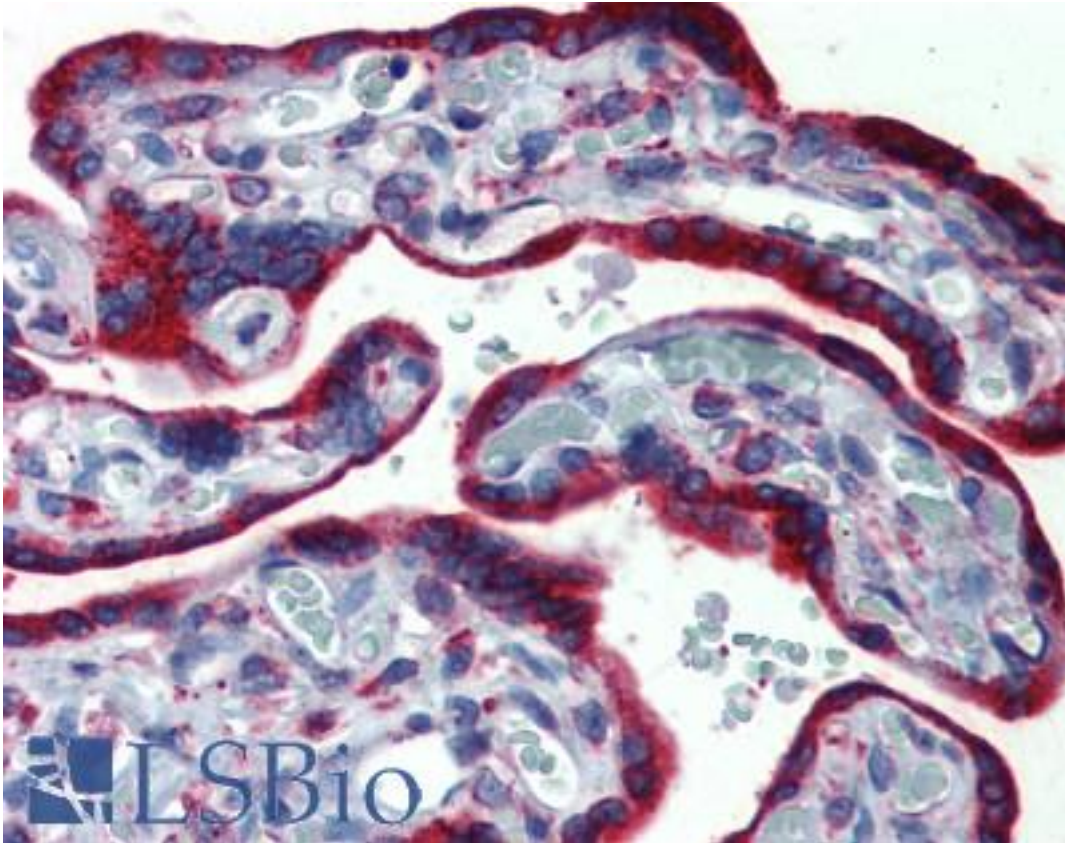
CatalogID:	LS-A8261
Target:	endoplasmic reticulum protein 44 (ERP44)
Synonyms:	ERP44 Antibody, ER protein 44 Antibody, PDIA10 Antibody, TXNDC4 Antibody, KIAA0573 Antibody
Host	ERP44 antibody was produced in Rabbit
Clonality:	Polyclonal
Immunogen Species:	ERP44 antibody was raised against Human
Antigen Type:	Synthetic peptide
Immunogen:	ERP44 antibody was raised against synthetic 18 amino acid peptide from C-terminus of human ERP44 / TXNDC4. Percent identity with other species by BLAST analysis: Human, Gorilla, Gibbon, Monkey, Marmoset, Mouse, Rat, Dog, Bat, Bovine, Hamster, Elephant, Panda, Horse, Rabbit, Pig, Opossum, Platypus (100%); Zebrafish (89%); Turkey, Chicken (83%).
Specificity:	Human ERP44 / TXNDC4. BLAST analysis of the peptide immunogen showed no homology with other human proteins.
Epitope:	C-Terminus
Reactivity:	Human, Gorilla, Gibbon, Monkey, Mouse, Rat, Bat, Bovine, Dog, Hamster, Horse, Pig, Rabbit
Purification:	Immunoaffinity purified
Presentation:	PBS, 0.1% sodium azide.
Recommended Storage:	Long term: -70°C; Short term: +4°C
Uses:	IHC - Paraffin (10 - 12.5 µg/ml) (Optimal dilution to be determined by the researcher)
Size:	50 µg
Concentration:	0.8 mg/ml

Immunohistochemistry Image:



Anti-ERP44 / TXNDC4 antibody LS-A8261 IHC of human, stomach. Immunohistochemistry of formalin-fixed, paraffin-embedded tissue after heat-induced antigen retrieval.

Immunohistochemistry Image:



Anti-ERP44 / TXNDC4 antibody LS-A8261 IHC of human, placenta. Immunohistochemistry of formalin-fixed, paraffin-embedded tissue after heat-induced antigen retrieval.

Requested From:

Japan

Laboratory Reagent For In Vitro Research Use Only

Not for resale without prior written consent from LifeSpan BioSciences, Inc.

Created on 9/23/2014

© 2014 LifeSpan BioSciences