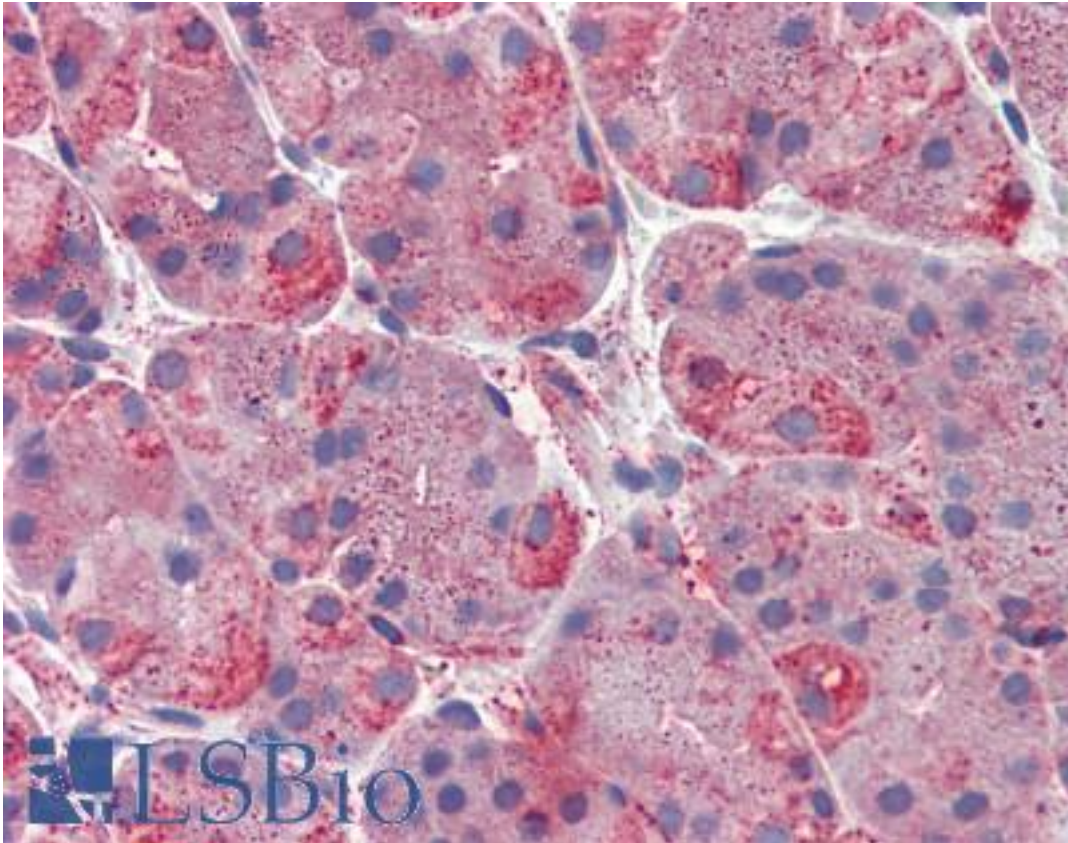


**ERP44 Rabbit anti-Human Polyclonal (C-Terminus) Antibody - LS-A8259 - LSBio**

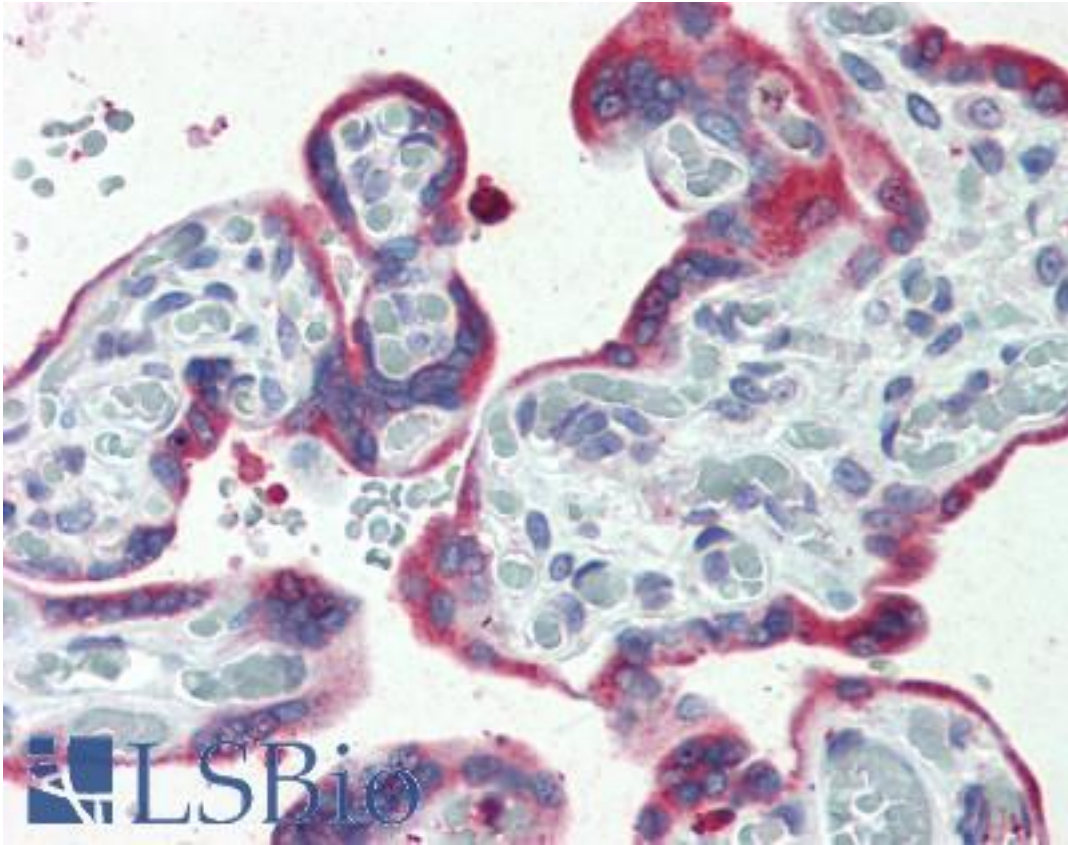
<b>CatalogID:</b>	LS-A8259
<b>Target:</b>	endoplasmic reticulum protein 44 (ERP44)
<b>Synonyms:</b>	ERP44 Antibody, ER protein 44 Antibody, PDIA10 Antibody, TXNDC4 Antibody, KIAA0573 Antibody
<b>Host</b>	ERP44 antibody was produced in Rabbit
<b>Clonality:</b>	Polyclonal
<b>Immunogen Species:</b>	ERP44 antibody was raised against Human
<b>Antigen Type:</b>	Synthetic peptide
<b>Immunogen:</b>	ERP44 antibody was raised against synthetic 20 amino acid peptide from C-terminus of human ERP44 / TXNDC4. Percent identity with other species by BLAST analysis: Human, Gorilla, Gibbon, Marmoset (100%); Monkey, Mouse, Rat, Hamster (95%); Bovine, Rabbit, Horse (90%); Bat, Dog, Panda, Pig (85%); Opossum, Turkey, Chicken, Lizard, Sea anemone (80%).
<b>Specificity:</b>	Human ERP44 / TXNDC4. BLAST analysis of the peptide immunogen showed no homology with other human proteins.
<b>Epitope:</b>	C-Terminus
<b>Reactivity:</b>	Human, Gorilla, Gibbon
<b>Predicted Reactivity:</b>	Monkey, Mouse, Rat, Bovine, Hamster, Horse, Rabbit
<b>Purification:</b>	Immunoaffinity purified
<b>Presentation:</b>	PBS, 0.1% sodium azide.
<b>Recommended Storage:</b>	Long term: -70°C; Short term: +4°C
<b>Uses:</b>	IHC - Paraffin (15 - 20 µg/ml) (Optimal dilution to be determined by the researcher)
<b>Size:</b>	50 µg
<b>Concentration:</b>	1 mg/ml

**Immunohistochemistry Image:**



Anti-ERP44 / TXNDC4 antibody LS-A8259 IHC of human, stomach. Immunohistochemistry of formalin-fixed, paraffin-embedded tissue after heat-induced antigen retrieval.

**Immunohistochemistry Image:**



Anti-ERP44 / TXNDC4 antibody LS-A8259 IHC of human, placenta. Immunohistochemistry of formalin-fixed, paraffin-embedded tissue after heat-induced antigen retrieval.

**Requested From:**

Japan

Laboratory Reagent For In Vitro Research Use Only

Not for resale without prior written consent from LifeSpan BioSciences, Inc.

Created on 9/23/2014

© 2014 LifeSpan BioSciences