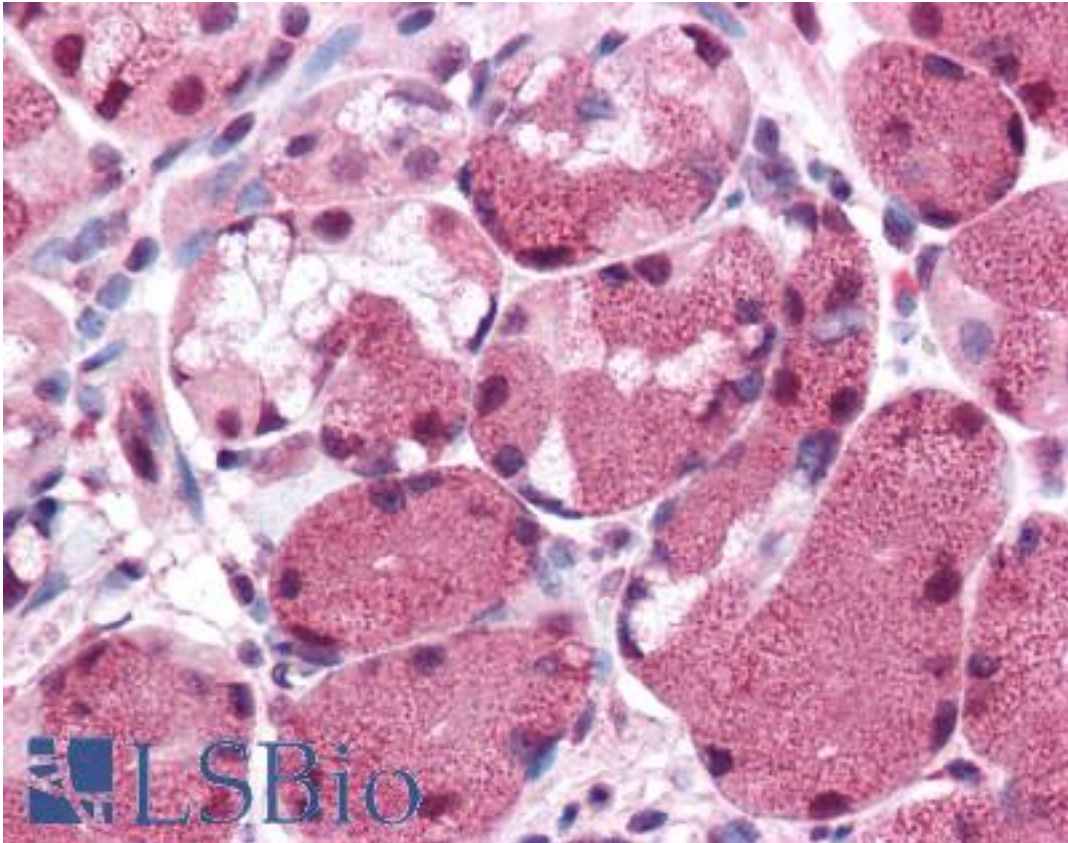


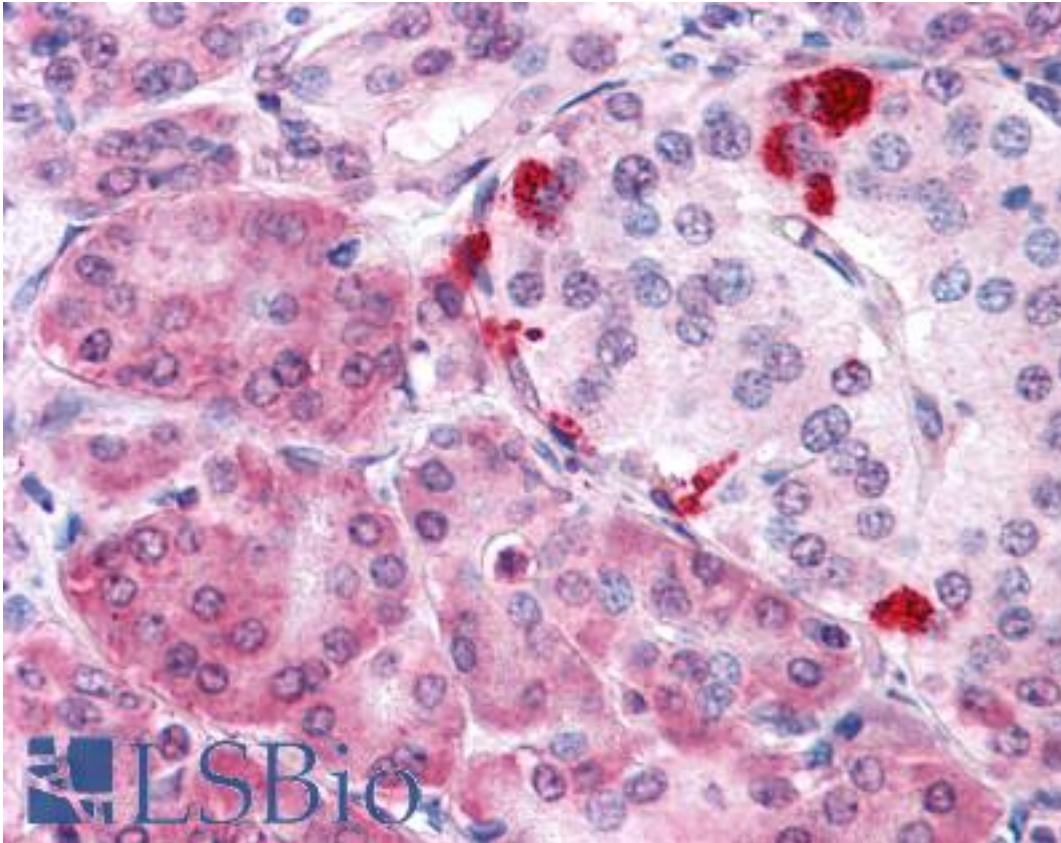
KIAA0152 / MLEC Rabbit anti-Human Polyclonal (Internal) Antibody - LS-A8206 - LSBio	
CatalogID:	LS-A8206
Target:	malectin (MLEC)
Synonyms:	MLEC Antibody, KIAA0152 Antibody, Malectin Antibody
Host	MLEC antibody was produced in Rabbit
Clonality:	Polyclonal
Immunogen Species:	KIAA0152 / MLEC antibody was raised against Human
Antigen Type:	Synthetic peptide
Immunogen:	KIAA0152 / MLEC antibody was raised against synthetic 14 amino acid peptide from internal region of human MLEC. Percent identity with other species by BLAST analysis: Human, Gorilla, Gibbon, Monkey, Marmoset, Mouse, Rat, Bovine, Dog, Bat, Elephant, Panda, Horse, Rabbit, Pig, Chicken, Xenopus (100%).
Specificity:	Human MLEC. BLAST analysis of the peptide immunogen showed no homology with other human proteins.
Epitope:	Internal
Reactivity:	Human, Gorilla, Gibbon, Monkey, Mouse, Rat, Bat, Bovine, Dog, Horse, Pig, Rabbit, Chicken, Xenopus
Purification:	Immunoaffinity purified
Presentation:	PBS, 0.1% sodium azide.
Recommended Storage:	Long term: -70°C; Short term: +4°C
Uses:	IHC - Paraffin (5 - 7.5 µg/ml) (Optimal dilution to be determined by the researcher)
Size:	50 µg
Concentration:	1 mg/ml

Immunohistochemistry Image:



Anti-MLEC antibody LS-A8206 IHC of human stomach. Immunohistochemistry of formalin-fixed, paraffin-embedded tissue after heat-induced antigen retrieval.

Immunohistochemistry Image:



Anti-MLEC antibody LS-A8206 IHC of human pancreas. Immunohistochemistry of formalin-fixed, paraffin-embedded tissue after heat-induced antigen retrieval.

Requested From:

Japan

Laboratory Reagent For In Vitro Research Use Only

Not for resale without prior written consent from LifeSpan BioSciences, Inc.

Created on 9/23/2014

© 2014 LifeSpan BioSciences