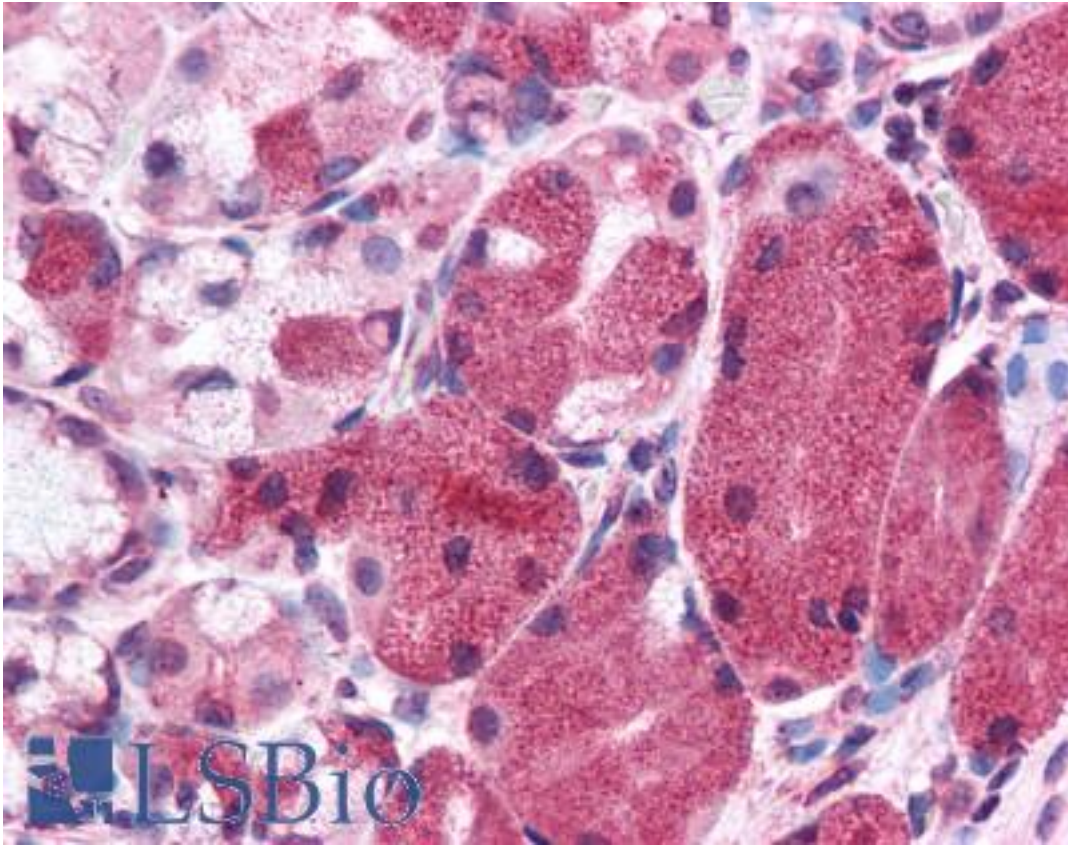


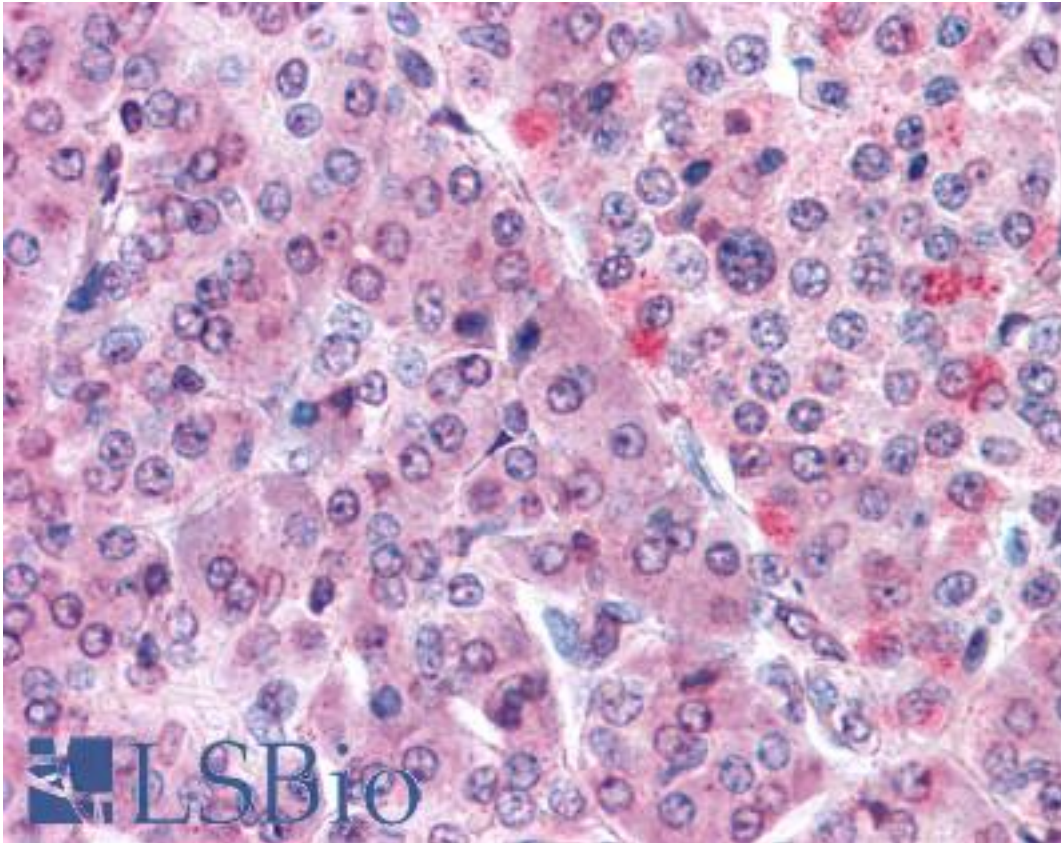
KIAA0152 / MLEC Rabbit anti-Human Polyclonal (Internal) Antibody - LS-A8202 - LSBio	
<b>CatalogID:</b>	LS-A8202
<b>Target:</b>	malectin (MLEC)
<b>Synonyms:</b>	MLEC Antibody, KIAA0152 Antibody, Malectin Antibody
<b>Host</b>	MLEC antibody was produced in Rabbit
<b>Clonality:</b>	Polyclonal
<b>Immunogen Species:</b>	KIAA0152 / MLEC antibody was raised against Human
<b>Antigen Type:</b>	Synthetic peptide
<b>Immunogen:</b>	KIAA0152 / MLEC antibody was raised against synthetic 18 amino acid peptide from internal region of human MLEC. Percent identity with other species by BLAST analysis: Human, Gorilla, Gibbon, Monkey, Marmoset, Bovine, Dog, Bat, Hamster, Elephant, Panda, Horse, Rabbit, Pig, Platypus (100%); Mouse, Rat, Turkey, Chicken (94%); Xenopus, Pufferfish, Zebrafish (89%); Stickleback (83%).
<b>Specificity:</b>	Human MLEC. BLAST analysis of the peptide immunogen showed no homology with other human proteins.
<b>Epitope:</b>	Internal
<b>Reactivity:</b>	Human, Gorilla, Gibbon, Monkey, Bat, Bovine, Dog, Hamster, Horse, Pig, Rabbit
<b>Predicted Reactivity:</b>	Mouse, Rat, Chicken
<b>Purification:</b>	Immunoaffinity purified
<b>Presentation:</b>	PBS, 0.1% sodium azide.
<b>Recommended Storage:</b>	Short term 4°C, long term aliquot and store at -20°C, avoid freeze thaw cycles.
<b>Uses:</b>	IHC - Paraffin (5 - 7.5 µg/ml) (Optimal dilution to be determined by the researcher)
<b>Size:</b>	50 µg
<b>Concentration:</b>	1 mg/ml

**Immunohistochemistry Image:**



Anti-MLEC antibody LS-A8202 IHC of human stomach. Immunohistochemistry of formalin-fixed, paraffin-embedded tissue after heat-induced antigen retrieval.

**Immunohistochemistry Image:**



Anti-MLEC antibody LS-A8202 IHC of human pancreas. Immunohistochemistry of formalin-fixed, paraffin-embedded tissue after heat-induced antigen retrieval.

**Requested From:**

Japan

Laboratory Reagent For In Vitro Research Use Only

Not for resale without prior written consent from LifeSpan BioSciences, Inc.

Created on 9/23/2014

© 2014 LifeSpan BioSciences