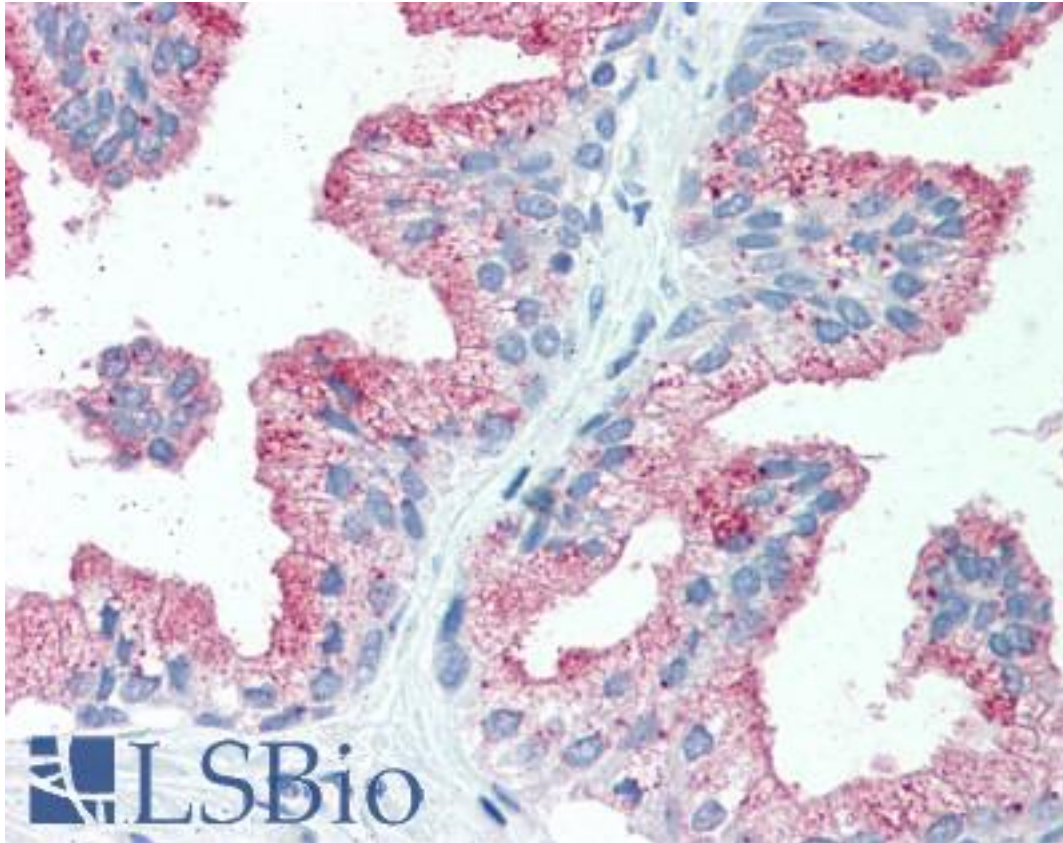


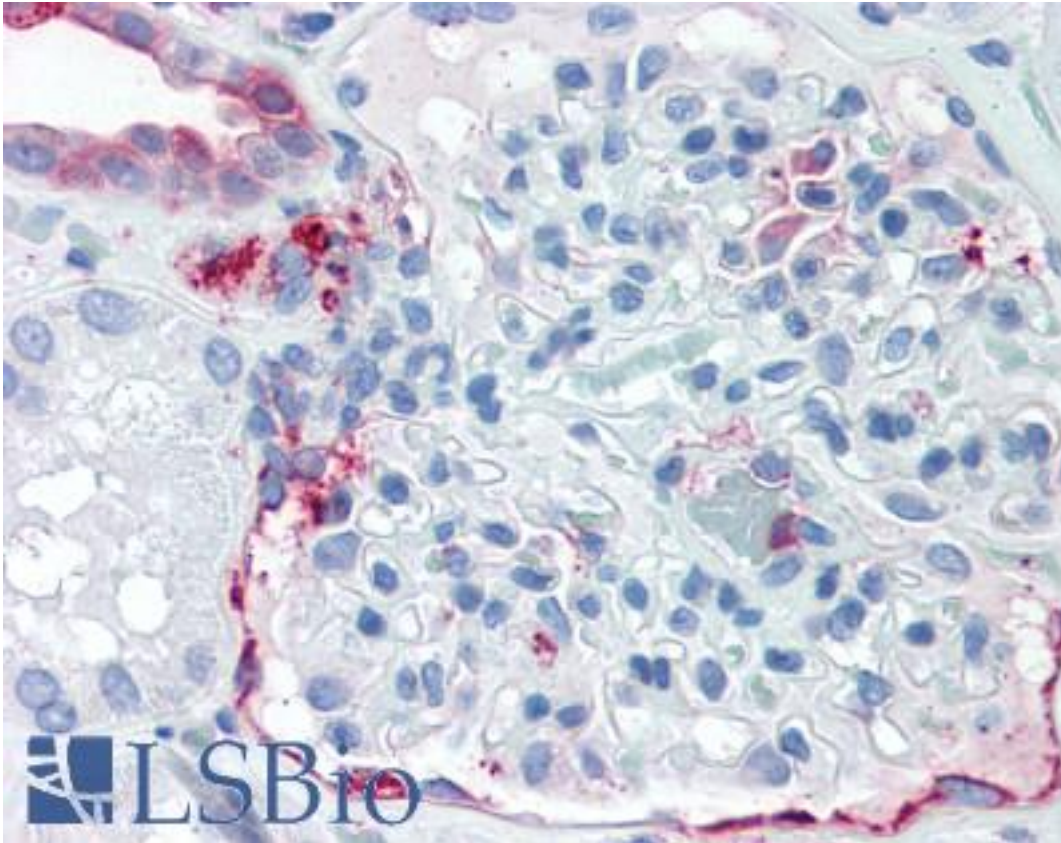
SLC39A14 / ZIP14 Rabbit anti-Human Polyclonal (Internal) Antibody - LS-A8199 - LSBio	
CatalogID:	LS-A8199
Target:	Solute Carrier Family 39 (zinc transporter), Member 14 (SLC39A14)
Synonyms:	SLC39A14 Antibody, KIAA0062 Antibody, LZT-Hs4 Antibody, NET34 Antibody, Zrt-, Irt-like protein 14 Antibody, Zinc transporter ZIP14 Antibody, ZIP-14 Antibody, ZIP14 Antibody, Zrt- and Irt-like protein 14 Antibody, Cig19 Antibody
Family / Subfamily:	Transporter / Zinc-iron transporter
Host	SLC39A14 antibody was produced in Rabbit
Clonality:	Polyclonal
Immunogen Species:	SLC39A14 / ZIP14 antibody was raised against Human
Antigen Type:	Synthetic peptide
Immunogen:	SLC39A14 / ZIP14 antibody was raised against synthetic 15 amino acid peptide from internal region of human SLC39A14. Percent identity with other species by BLAST analysis: Human, Chimpanzee, Gorilla, Panda, Dog, Bat, Horse, Pig (100%); Orangutan, Gibbon, Monkey, Galago, Marmoset, Mouse, Hamster, Bovine (93%); Elephant (87%); Rat, Rabbit, Guinea pig (80%).
Specificity:	Human SLC39A14. BLAST analysis of the peptide immunogen showed no homology with other human proteins.
Epitope:	Internal
Reactivity:	Human, Chimpanzee, Gorilla, Bat, Dog, Horse, Pig
Predicted Reactivity:	Orangutan, Gibbon, Monkey, Mouse, Bovine, Hamster
Purification:	Immunoaffinity purified
Presentation:	PBS, 0.1% sodium azide.
Recommended Storage:	Long term: -70°C; Short term: +4°C
Uses:	IHC - Paraffin (5 - 7.5 µg/ml) (Optimal dilution to be determined by the researcher)
Size:	50 µg

Immunohistochemistry Image:



Anti-SLC39A14 antibody LS-A8199 IHC of human prostate. Immunohistochemistry of formalin-fixed, paraffin-embedded tissue after heat-induced antigen retrieval.

Immunohistochemistry Image:



Anti-SLC39A14 antibody LS-A8199 IHC of human kidney. Immunohistochemistry of formalin-fixed, paraffin-embedded tissue after heat-induced antigen retrieval.

Requested From:

Japan

Laboratory Reagent For In Vitro Research Use Only

Not for resale without prior written consent from LifeSpan BioSciences, Inc.

Created on 9/23/2014

© 2014 LifeSpan BioSciences