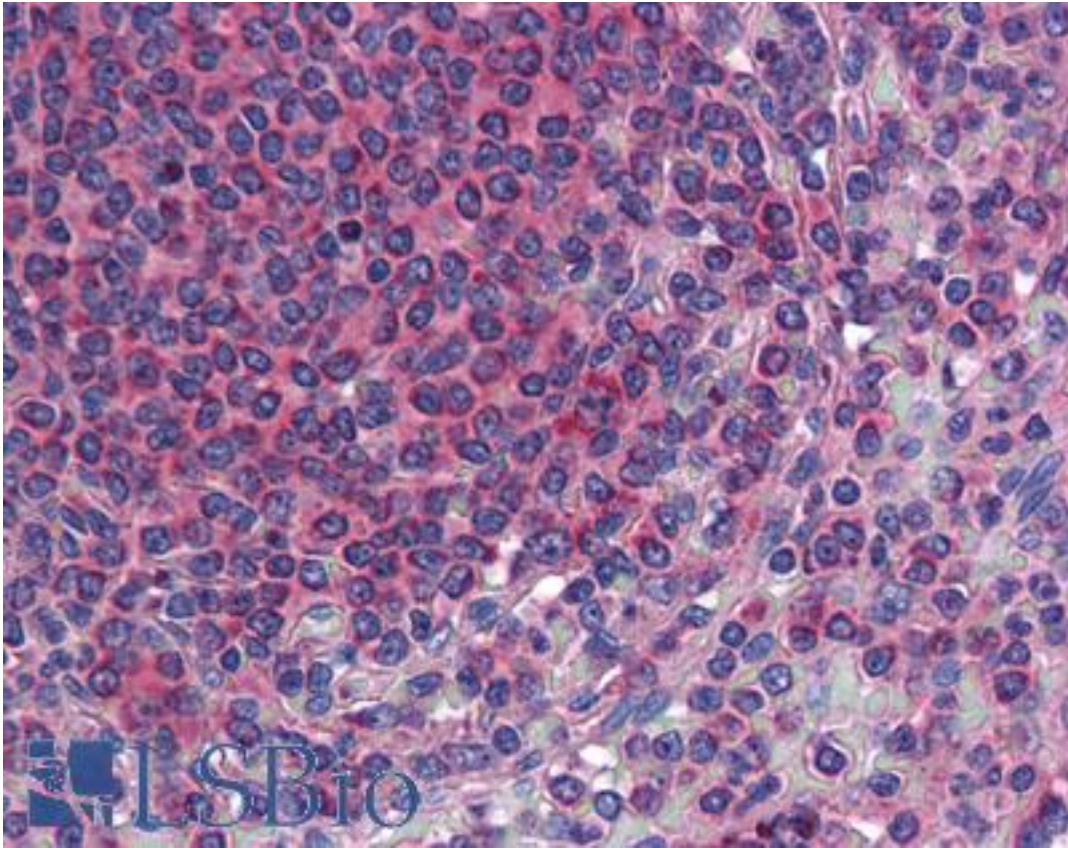


TM9SF3 Rabbit anti-Human Polyclonal (Internal) Antibody - LS-A8168 - LSBio

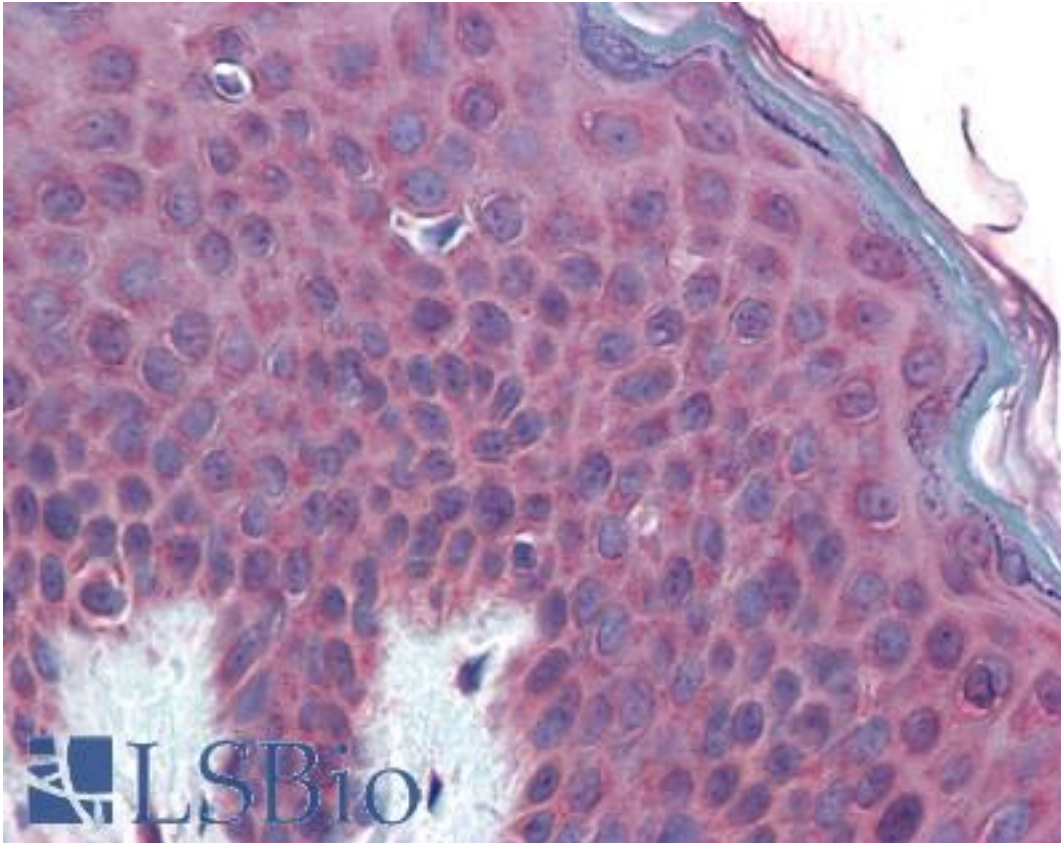
CatalogID:	LS-A8168
Target:	Transmembrane 9 Superfamily Member 3 (TM9SF3)
Synonyms:	TM9SF3 Antibody, EP70-P-iso Antibody, RP11-34E5.1 Antibody, SMBP Antibody, SM-11044 binding protein Antibody, SM-11044-binding protein Antibody
Host	TM9SF3 antibody was produced in Rabbit
Clonality:	Polyclonal
Immunogen Species:	TM9SF3 antibody was raised against Human
Antigen Type:	Synthetic peptide
Immunogen:	TM9SF3 antibody was raised against synthetic 17 amino acid peptide from internal region of human TM9SF3. Percent identity with other species by BLAST analysis: Human, Gorilla, Gibbon, Monkey, Marmoset, Mouse, Rat, Bovine, Dog, Bat, Hamster, Elephant, Panda, Horse, Rabbit, Pig, Turkey, Chicken, Platypus, Xenopus, Pufferfish, Zebrafish (100%); Salmon, Stickleback (94%); Opossum, Seq squirt (82%).
Specificity:	Human TM9SF3. BLAST analysis of the peptide immunogen showed no homology with other human proteins.
Epitope:	Internal
Reactivity:	Human, Gorilla, Gibbon, Monkey, Mouse, Rat, Bat, Bovine, Dog, Hamster, Horse, Pig, Rabbit, Chicken, Xenopus, Zebrafish
Purification:	Immunoaffinity purified
Presentation:	PBS, 0.1% sodium azide.
Recommended Storage:	Long term: -70°C; Short term: +4°C
Uses:	IHC - Paraffin (5 - 7.5 µg/ml) (Optimal dilution to be determined by the researcher)
Size:	50 µg
Concentration:	1 mg/ml

Immunohistochemistry Image:



Anti-TM9SF3 antibody LS-A8168 IHC of human spleen. Immunohistochemistry of formalin-fixed, paraffin-embedded tissue after heat-induced antigen retrieval.

Immunohistochemistry Image:



Anti-TM9SF3 antibody LS-A8168 IHC of human skin. Immunohistochemistry of formalin-fixed, paraffin-embedded tissue after heat-induced antigen retrieval.

Requested From:

Japan

Laboratory Reagent For In Vitro Research Use Only

Not for resale without prior written consent from LifeSpan BioSciences, Inc.

Created on 9/23/2014

© 2014 LifeSpan BioSciences