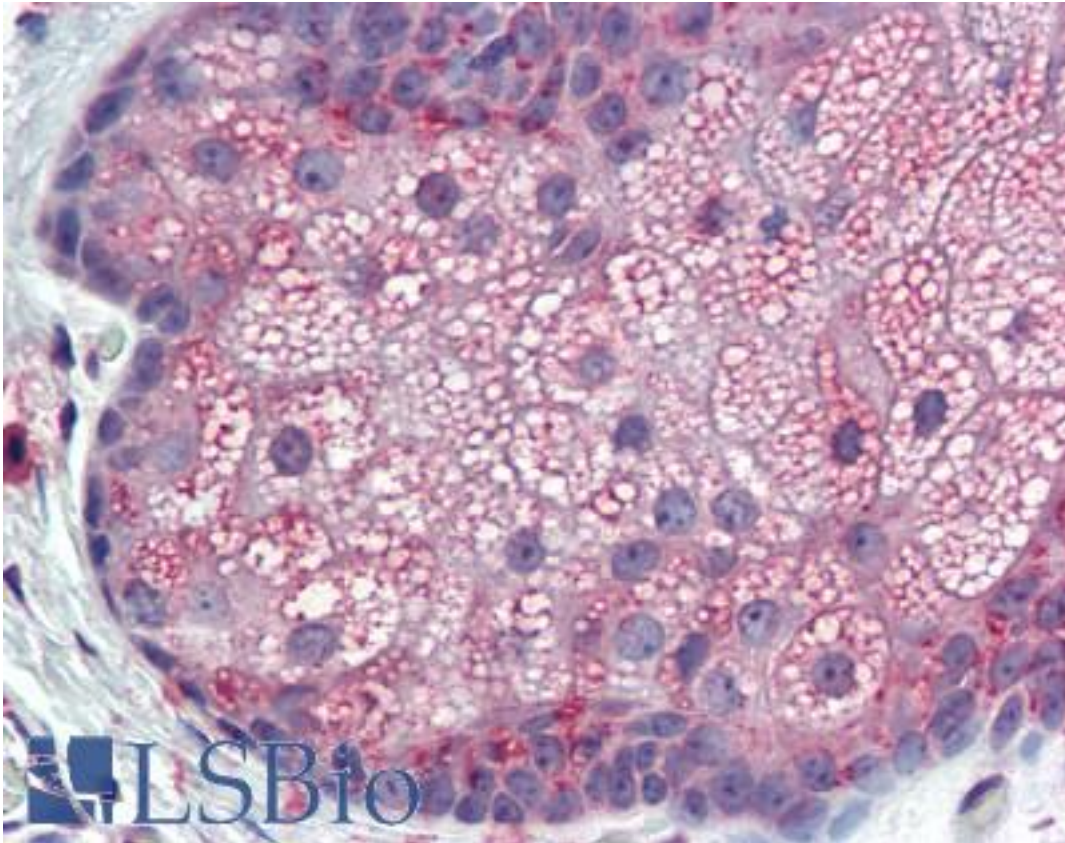


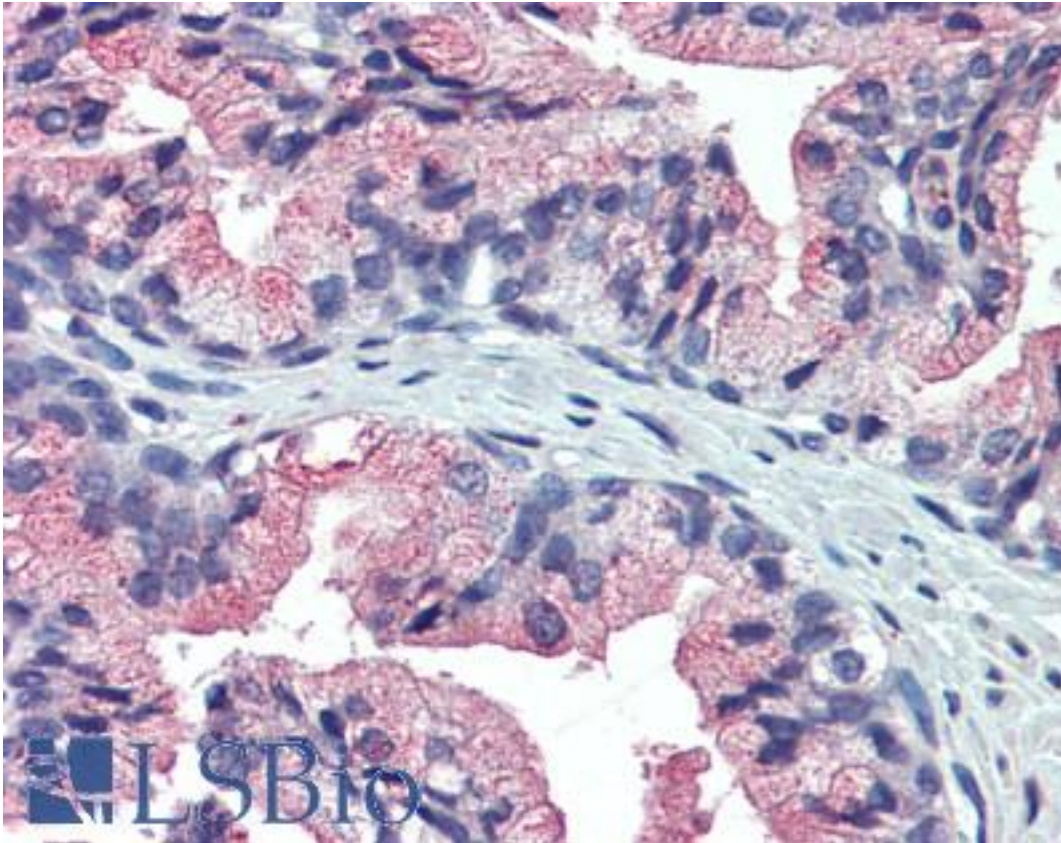
TM9SF3 Rabbit anti-Human Polyclonal (Internal) Antibody - LS-A8165 - LSBio	
<b>CatalogID:</b>	LS-A8165
<b>Target:</b>	Transmembrane 9 Superfamily Member 3 (TM9SF3)
<b>Synonyms:</b>	TM9SF3 Antibody, EP70-P-iso Antibody, RP11-34E5.1 Antibody, SMBP Antibody, SM-11044 binding protein Antibody, SM-11044-binding protein Antibody
<b>Host</b>	TM9SF3 antibody was produced in Rabbit
<b>Clonality:</b>	Polyclonal
<b>Immunogen Species:</b>	TM9SF3 antibody was raised against Human
<b>Antigen Type:</b>	Synthetic peptide
<b>Immunogen:</b>	TM9SF3 antibody was raised against synthetic 15 amino acid peptide from internal region of human TM9SF3. Percent identity with other species by BLAST analysis: Human, Chimpanzee, Gorilla, Orangutan, Gibbon, Monkey, Galago, Marmoset, Mouse, Rat, Elephant, Panda, Bovine, Dog, Horse, Rabbit, Pig, Opossum, Guinea pig, Turkey, Zebra finch, Chicken, Platypus, Xenopus (100%); Lizard, Stickleback, Medaka (93%); Bat, Salmon, Zebrafish, Eye worm, Tick (87%); Pufferfish, Drosophila, Water flea, Nematode (80%).
<b>Specificity:</b>	Human TM9SF3. BLAST analysis of the peptide immunogen showed no homology with other human proteins.
<b>Epitope:</b>	Internal
<b>Reactivity:</b>	Human, Chimpanzee, Gorilla, Orangutan, Gibbon, Monkey, Mouse, Rat, Bovine, Dog, Guinea pig, Horse, Pig, Rabbit, Chicken, Xenopus
<b>Purification:</b>	Immunoaffinity purified
<b>Presentation:</b>	PBS, 0.1% sodium azide.
<b>Recommended Storage:</b>	Long term: -70°C; Short term: +4°C
<b>Uses:</b>	IHC - Paraffin (10 µg/ml) (Optimal dilution to be determined by the researcher)
<b>Size:</b>	50 µg
<b>Concentration:</b>	1 mg/ml

**Immunohistochemistry Image:**



Anti-TM9SF3 antibody IHC of skin, sebaceous gland, human. Immunohistochemistry of formalin-fixed, paraffin-embedded tissue after heat-induced antigen retrieval. Antibody LS-A8165 dilution 10 ug/ml.

**Immunohistochemistry Image:**



Anti-TM9SF3 antibody IHC of prostate, human. Immunohistochemistry of formalin-fixed, paraffin-embedded tissue after heat-induced antigen retrieval. Antibody LS-A8165 dilution 10 ug/ml.

**Requested From:**

Japan

Laboratory Reagent For In Vitro Research Use Only

Not for resale without prior written consent from LifeSpan BioSciences, Inc.

Created on 9/23/2014

© 2014 LifeSpan BioSciences