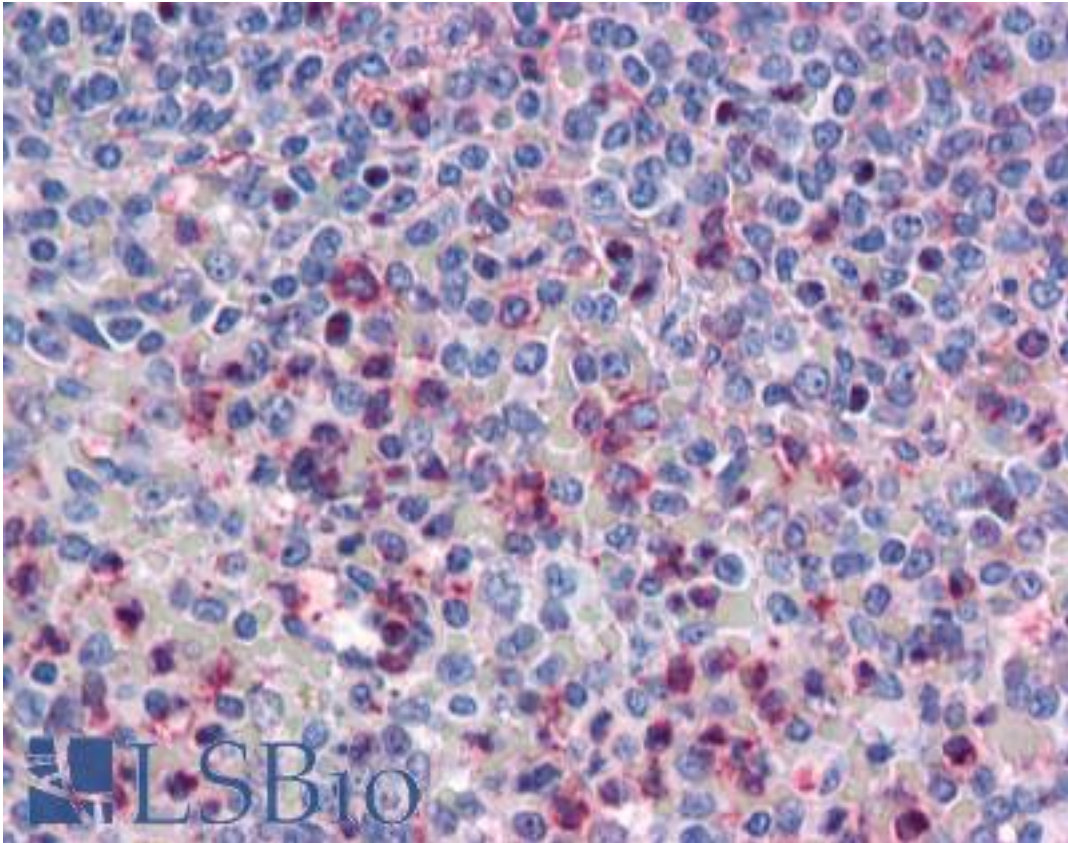


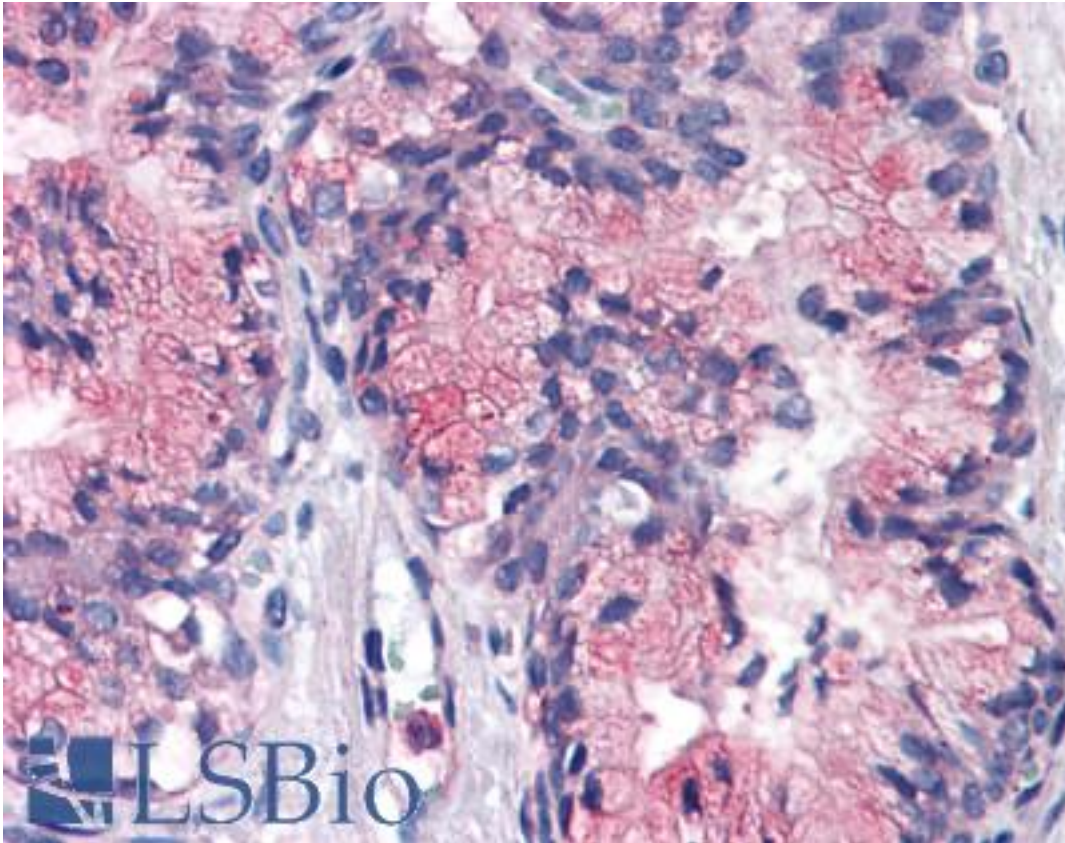
ATP1B3 Rabbit anti-Human Polyclonal (Internal) Antibody - LS-A8143 - LSBio	
<b>CatalogID:</b>	LS-A8143
<b>Target:</b>	ATPase, Na <sup>+</sup> /K <sup>+</sup> transporting, beta 3 polypeptide (ATP1B3)
<b>Synonyms:</b>	ATP1B3 Antibody, ATPB-3 Antibody, CD298 Antibody, CD298 antigen Antibody
<b>Family / Subfamily:</b>	Transporter / ATPase - P type, beta subunit
<b>Host</b>	ATP1B3 antibody was produced in Rabbit
<b>Clonality:</b>	Polyclonal
<b>Immunogen Species:</b>	ATP1B3 antibody was raised against Human
<b>Antigen Type:</b>	Synthetic peptide
<b>Immunogen:</b>	ATP1B3 antibody was raised against synthetic 18 amino acid peptide from internal region of human ATP1B3. Percent identity with other species by BLAST analysis: Human, Chimpanzee, Orangutan, Gibbon, Monkey, Marmoset, Mouse, Rat, Hamster, Panda, Dog, Bovine, Horse, Rabbit (100%); Elephant, Bat, Pig, Guinea pig (94%); Galago, Platypus (83%).
<b>Specificity:</b>	Human ATP1B3. BLAST analysis of the peptide immunogen showed no homology with other human proteins.
<b>Epitope:</b>	Internal
<b>Reactivity:</b>	Human, Chimpanzee, Orangutan, Gibbon, Monkey, Mouse, Rat, Bovine, Dog, Hamster, Horse, Rabbit
<b>Predicted Reactivity:</b>	Bat, Guinea pig, Pig
<b>Purification:</b>	Immunoaffinity purified
<b>Presentation:</b>	PBS, 0.1% sodium azide.
<b>Recommended Storage:</b>	Long term: -70°C; Short term: +4°C
<b>Uses:</b>	IHC - Paraffin (10 - 15 µg/ml) (Optimal dilution to be determined by the researcher)
<b>Size:</b>	50 µg
<b>Concentration:</b>	1 mg/ml

**Immunohistochemistry Image:**



Anti-ATP1B3 antibody LS-A8143 IHC of human spleen. Immunohistochemistry of formalin-fixed, paraffin-embedded tissue after heat-induced antigen retrieval.

**Immunohistochemistry Image:**



Anti-ATP1B3 antibody LS-A8143 IHC of human prostate. Immunohistochemistry of formalin-fixed, paraffin-embedded tissue after heat-induced antigen retrieval.

**Requested From:**

Japan

Laboratory Reagent For In Vitro Research Use Only

Not for resale without prior written consent from LifeSpan BioSciences, Inc.

Created on 9/23/2014

© 2014 LifeSpan BioSciences