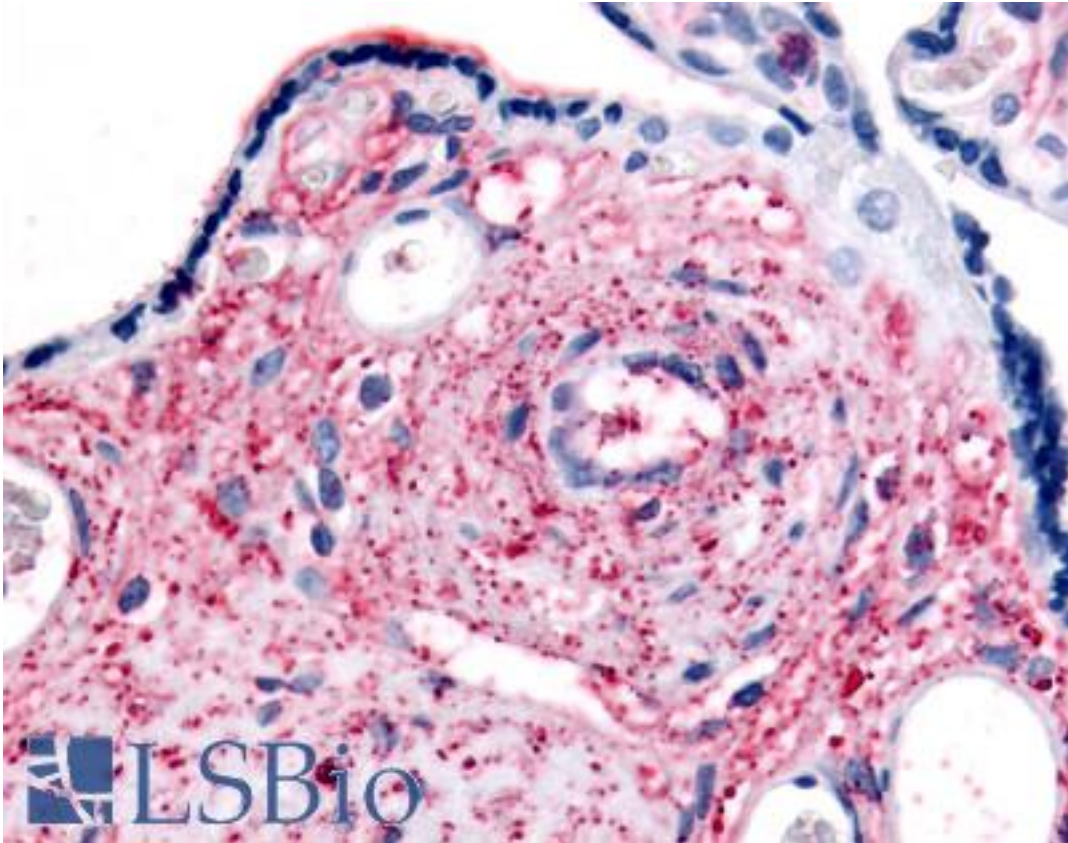


KCNMB3 Rabbit anti-Human Polyclonal (C-Terminus) Antibody - LS-A8112 - LSBio	
CatalogID:	LS-A8112
Target:	potassium large conductance calcium-activated channel, subfamily M beta member 3 (KCNMB3)
Synonyms:	KCNMB3 Antibody, BK channel subunit beta-3 Antibody, BK beta 3 Antibody, BKBETA3 Antibody, HKCNMB3 Antibody, Maxi K beta 3 Antibody, Maxi K channel subunit beta-3 Antibody, K(VCA)beta-3 Antibody, KCNMBL Antibody, Slo-beta-3 Antibody, SLOBETA3 Antibody, HBETA3 Antibody
Family / Subfamily:	Ion Channel / Potassium channel - calcium-activated
Host	KCNMB3 antibody was produced in Rabbit
Clonality:	Polyclonal
Immunogen Species:	KCNMB3 antibody was raised against Human
Antigen Type:	Synthetic peptide
Immunogen:	KCNMB3 antibody was raised against synthetic 15 amino acid peptide from C-terminus of human KCNMB3. Percent identity with other species by BLAST analysis: Human, Gorilla (100%); Gibbon, Monkey (87%); Marmoset (80%).
Specificity:	Human KCNMB3. BLAST analysis of the peptide immunogen showed no homology with other human proteins.
Epitope:	C-Terminus
Reactivity:	Human, Gorilla
Purification:	Immunoaffinity purified
Presentation:	PBS, 0.1% sodium azide.
Recommended Storage:	Long term: -70°C; Short term: +4°C
Uses:	IHC - Paraffin (10 µg/ml) (Optimal dilution to be determined by the researcher)
Size:	50 µg
Concentration:	1 mg/ml

Immunohistochemistry Image:



Anti-KCNMB3 antibody LS-A8112 IHC of human placenta. Immunohistochemistry of formalin-fixed, paraffin-embedded tissue after heat-induced antigen retrieval.

Requested From:

Japan

Laboratory Reagent For In Vitro Research Use Only

Not for resale without prior written consent from LifeSpan BioSciences, Inc.

Created on 9/23/2014

© 2014 LifeSpan BioSciences