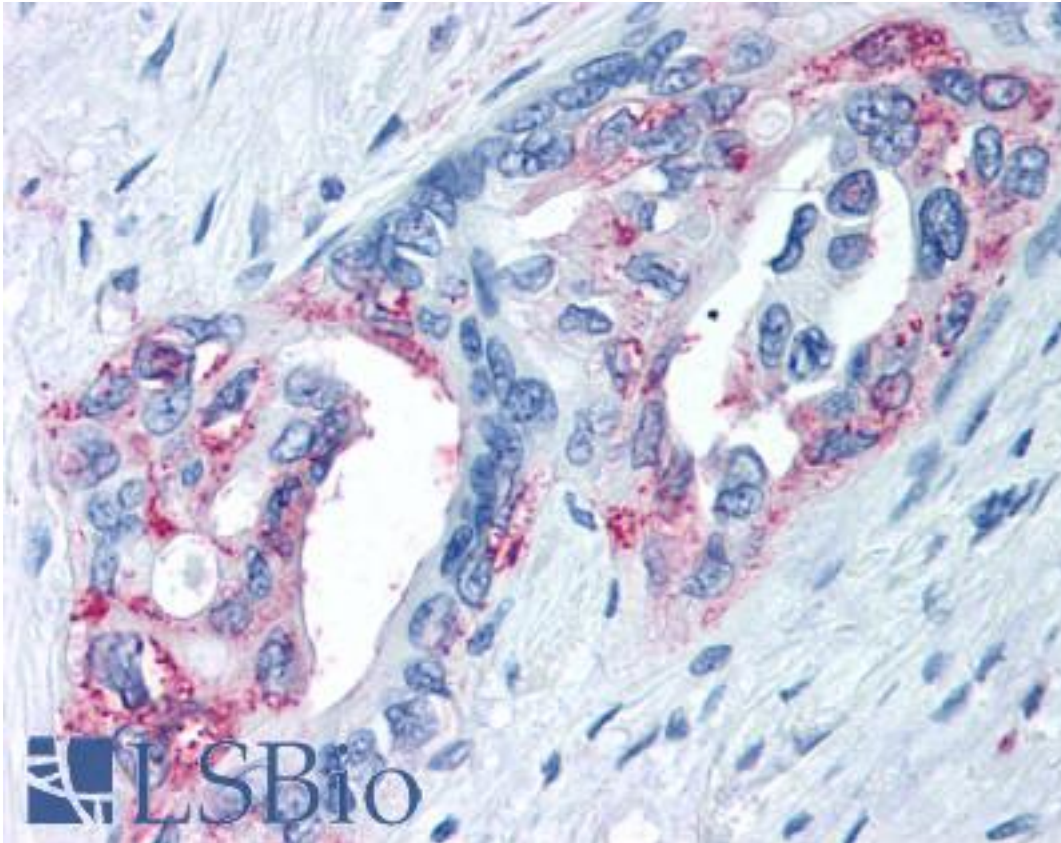


TRPM8 Rabbit anti-Human Polyclonal (Internal) Antibody - LS-A8099 - LSBio	
<b>CatalogID:</b>	LS-A8099
<b>Target:</b>	transient receptor potential cation channel, subfamily M, member 8 (TRPM8)
<b>Synonyms:</b>	TRPM8 Antibody, CMR1 Antibody, Cold-menthol receptor type 1 Antibody, LTrpC-6 Antibody, TRPP8 Antibody, Trp-p8 Antibody, LTRPC6 Antibody
<b>Family / Subfamily:</b>	Ion Channel / Calcium channel - TRP
<b>Host</b>	TRPM8 antibody was produced in Rabbit
<b>Clonality:</b>	Polyclonal
<b>Immunogen Species:</b>	TRPM8 antibody was raised against Human
<b>Antigen Type:</b>	Synthetic peptide
<b>Immunogen:</b>	TRPM8 antibody was raised against synthetic 15 amino acid peptide from internal region of human TRPM8. Percent identity with other species by BLAST analysis: Human, Gorilla, Gibbon, Baboon, Monkey, Marmoset, Mouse, Rat, Guinea pig (100%); Galago, Panda, Bovine, Bat, Dog, Rabbit, Pig, Platypus, Lizard (93%); Elephant, Horse, Opossum, Turkey, Chicken, Xenopus (87%); Armadillo (80%).
<b>Specificity:</b>	Human TRPM8. BLAST analysis of the peptide immunogen showed no homology with other human proteins.
<b>Epitope:</b>	Internal
<b>Reactivity:</b>	Human, Gorilla, Gibbon, Monkey, Mouse, Rat, Guinea pig
<b>Predicted Reactivity:</b>	Bat, Bovine, Dog, Pig, Rabbit
<b>Purification:</b>	Immunoaffinity purified
<b>Presentation:</b>	PBS, 0.1% sodium azide.
<b>Recommended Storage:</b>	Long term: -70°C; Short term: +4°C
<b>Uses:</b>	IHC - Paraffin (10 µg/ml) (Optimal dilution to be determined by the researcher)
<b>Size:</b>	50 µg
<b>Concentration:</b>	0.75 mg/ml

**Immunohistochemistry Image:**



Anti-TRPM8 antibody LS-A8099 IHC of human prostate carcinoma. Immunohistochemistry of formalin-fixed, paraffin-embedded tissue after heat-induced antigen retrieval.

**Requested From:**

Japan

Laboratory Reagent For In Vitro Research Use Only

Not for resale without prior written consent from LifeSpan BioSciences, Inc.

Created on 9/23/2014

© 2014 LifeSpan BioSciences