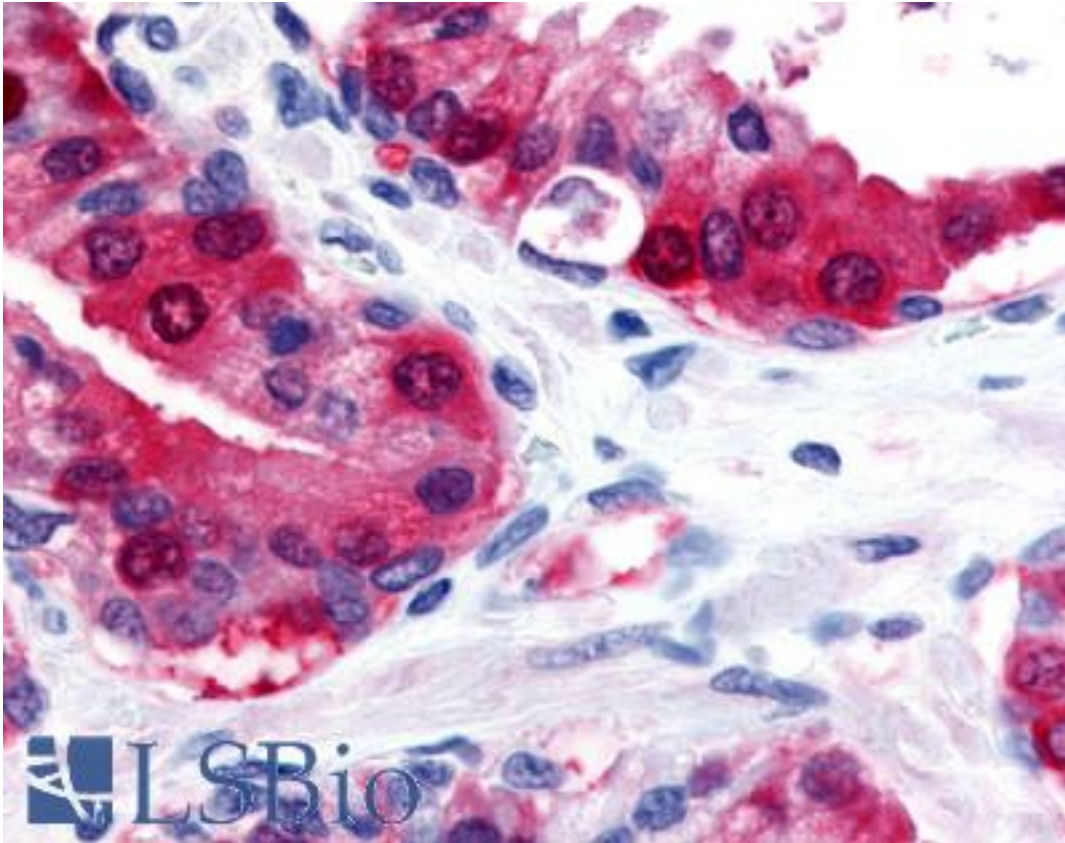


TRPM8 Rabbit anti-Human Polyclonal (Internal) Antibody - LS-A8090 - LSBio	
CatalogID:	LS-A8090
Target:	transient receptor potential cation channel, subfamily M, member 8 (TRPM8)
Synonyms:	TRPM8 Antibody, CMR1 Antibody, Cold-menthol receptor type 1 Antibody, LTrpC-6 Antibody, TRPP8 Antibody, Trp-p8 Antibody, LTRPC6 Antibody
Family / Subfamily:	Ion Channel / Calcium channel - TRP
Host	TRPM8 antibody was produced in Rabbit
Clonality:	Polyclonal
Immunogen Species:	TRPM8 antibody was raised against Human
Antigen Type:	Synthetic peptide
Immunogen:	TRPM8 antibody was raised against synthetic 15 amino acid peptide from internal region of human TRPM8. Percent identity with other species by BLAST analysis: Human, Gorilla, Gibbon, Baboon, Monkey, Mouse, Rat, Hamster, Elephant, Panda, Bat, Dog, Rabbit, Horse, Guinea pig, Turkey, Chicken, Armadillo, Platypus (100%); Galago, Marmoset, Bovine, Pig, Opossum, Xenopus (93%); Lizard (87%).
Specificity:	Human TRPM8. BLAST analysis of the peptide immunogen showed no homology with other human proteins, except TRPM2 (60%).
Epitope:	Internal
Reactivity:	Human, Gorilla, Gibbon, Mouse, Rat, Bat, Dog, Guinea pig, Hamster, Horse, Rabbit, Chicken
Predicted Reactivity:	Monkey, Bovine, Pig, Xenopus
Purification:	Immunoaffinity purified
Presentation:	PBS, 0.1% sodium azide.
Recommended Storage:	Long term: -70°C; Short term: +4°C
Uses:	IHC - Paraffin (2.4 µg/ml) (Optimal dilution to be determined by the researcher)
Size:	50 µg
Concentration:	1 mg/ml

Immunohistochemistry Image:



Anti-TRPM8 antibody LS-A8090 IHC of human prostate. Immunohistochemistry of formalin-fixed, paraffin-embedded tissue after heat-induced antigen retrieval.

Requested From:

Japan

Laboratory Reagent For In Vitro Research Use Only

Not for resale without prior written consent from LifeSpan BioSciences, Inc.

Created on 9/23/2014

© 2014 LifeSpan BioSciences