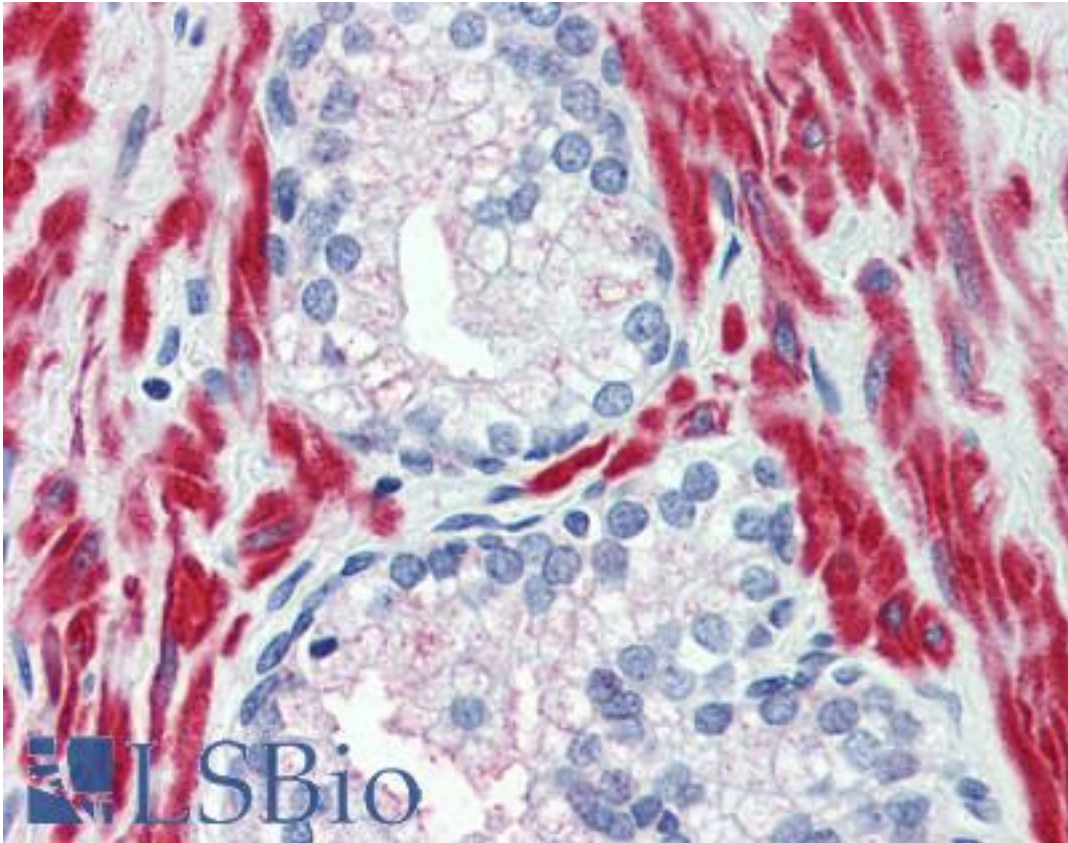


TRPM8 Rabbit anti-Human Polyclonal (N-Terminus) Antibody - LS-A8088 - LSBio

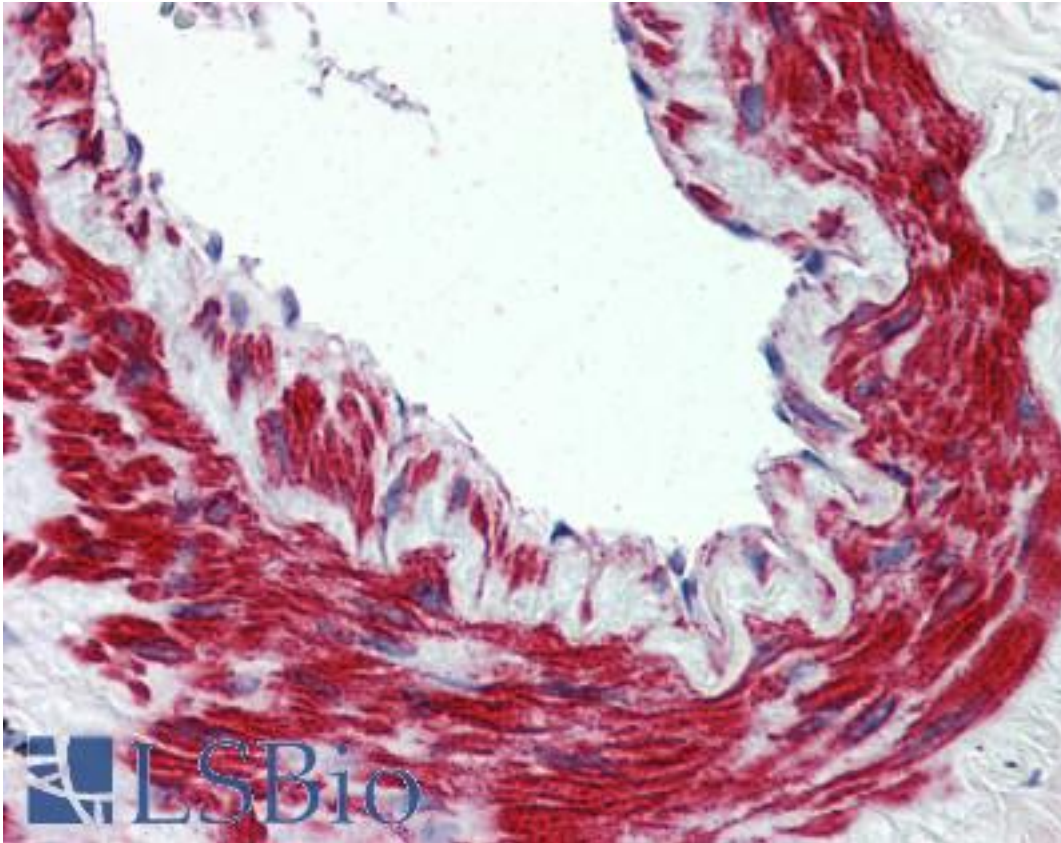
CatalogID:	LS-A8088
Target:	transient receptor potential cation channel, subfamily M, member 8 (TRPM8)
Synonyms:	TRPM8 Antibody, CMR1 Antibody, Cold-menthol receptor type 1 Antibody, LTrpC-6 Antibody, TRPP8 Antibody, Trp-p8 Antibody, LTRPC6 Antibody
Family / Subfamily:	Ion Channel / Calcium channel - TRP
Host	TRPM8 antibody was produced in Rabbit
Clonality:	Polyclonal
Immunogen Species:	TRPM8 antibody was raised against Human
Antigen Type:	Synthetic peptide
Immunogen:	TRPM8 antibody was raised against synthetic 17 amino acid peptide from N-terminal cytoplasmic domain of human TRPM8. Percent identity with other species by BLAST analysis: Human, Gorilla, Gibbon, Baboon, Monkey, Marmoset, Bat, Dog, Hamster, Elephant, Panda, Rabbit, Opossum, Guinea pig, Platypus (100%); Galago, Mouse, Rat, Horse, Pig, Armadillo (94%); Bovine, Lizard (88%); Xenopus (82%).
Specificity:	Human TRPM8. BLAST analysis of the peptide immunogen showed no homology with other human proteins.
Epitope:	N-Terminus
Reactivity:	Human, Gorilla, Gibbon, Monkey, Bat, Dog, Guinea pig, Hamster, Rabbit
Predicted Reactivity:	Mouse, Rat, Horse, Pig
Purification:	Immunoaffinity purified
Presentation:	PBS, 0.1% sodium azide.
Recommended Storage:	Long term: -70°C; Short term: +4°C
Usage Summary:	Immunohistochemistry with formalin-fixed paraffin-embedded tissues requires pretreatment with Proteinase K.
Uses:	IHC - Paraffin (5 µg/ml) (Optimal dilution to be determined by the researcher)
Size:	50 µg
Concentration:	1 mg/ml

Immunohistochemistry Image:



Anti-TRPM8 antibody LS-A8088 IHC of human prostate. Immunohistochemistry of formalin-fixed, paraffin-embedded tissue after heat-induced antigen retrieval.

Immunohistochemistry Image:



Anti-TRPM8 antibody LS-A8088 IHC of human lung, vessel. Immunohistochemistry of formalin-fixed, paraffin-embedded tissue after heat-induced antigen retrieval.

Requested From:

Japan

Laboratory Reagent For In Vitro Research Use Only

Not for resale without prior written consent from LifeSpan BioSciences, Inc.

Created on 9/23/2014

© 2014 LifeSpan BioSciences