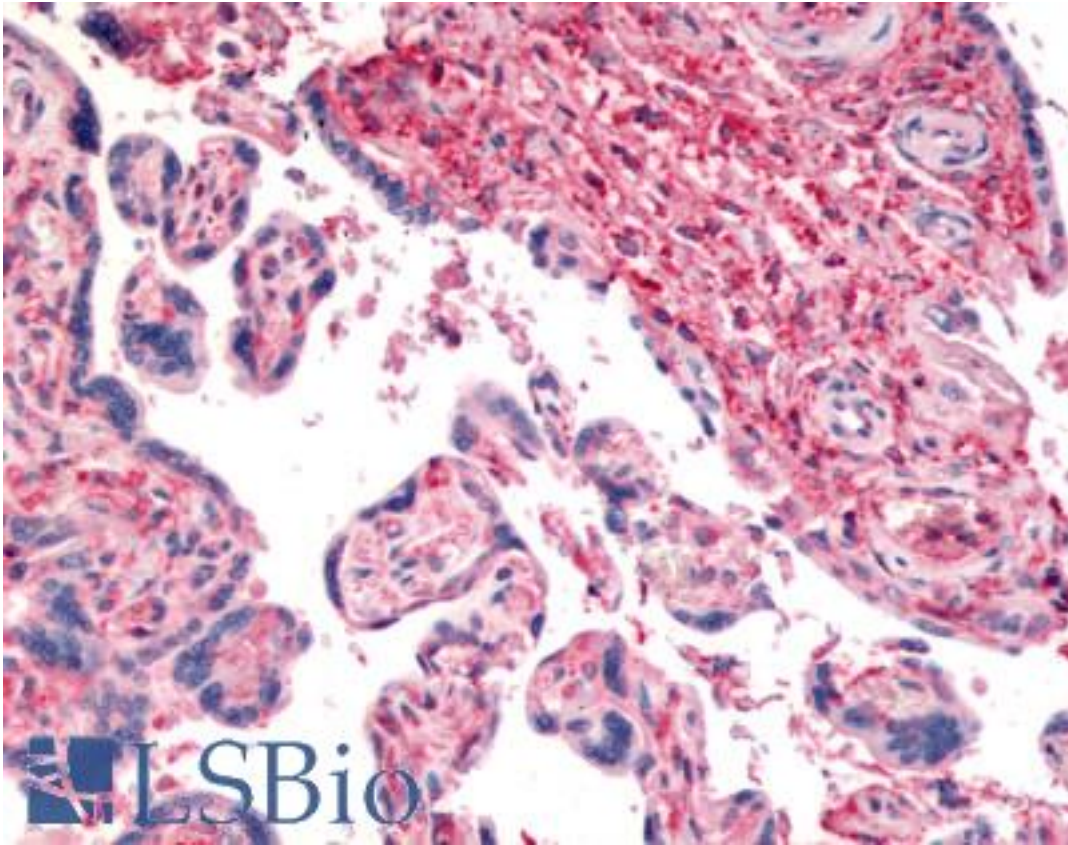


DPP4 / CD26 Rabbit anti-Human Polyclonal (Internal) Antibody - LS-A8060 - LSBio

CatalogID:	LS-A8060
Target:	dipeptidyl-peptidase 4 (DPP4)
Synonyms:	DPP4 Antibody, ADCP-2 Antibody, ADABP Antibody, Dipeptidyl peptidase IV Antibody, Dipeptidyl-peptidase 4 Antibody, DPPIV Antibody, ADCP2 Antibody, T-cell activation antigen CD26 Antibody, CD26 Antibody, CD26 antigen Antibody, Dipeptidyl peptidase 4 Antibody, Dipeptidylpeptidase 4 Antibody, DPP IV Antibody, TP103 Antibody
Family / Subfamily:	Protease / Serine S9B
Host	DPP4 antibody was produced in Rabbit
Clonality:	Polyclonal
Immunogen Species:	DPP4 / CD26 antibody was raised against Human
Antigen Type:	Synthetic peptide
Immunogen:	DPP4 / CD26 antibody was raised against synthetic 16 amino acid peptide from internal region of human CD26. Percent identity with other species by BLAST analysis: Human, Orangutan, Gibbon, Monkey, Marmoset (100%); Gorilla, Sheep, Elephant, Bovine, Horse, Pig (94%); Rabbit (88%); Bat, Dog, Cat (81%).
Specificity:	Human CD26. BLAST analysis of the peptide immunogen showed no homology with other human proteins, except FAP (56%).
Epitope:	Internal
Reactivity:	Human, Orangutan, Gibbon, Monkey
Predicted Reactivity:	Gorilla, Bovine, Horse, Pig, Sheep
Purification:	Immunoaffinity purified
Presentation:	PBS, 0.1% sodium azide.
Recommended Storage:	Long term: -70°C; Short term: +4°C
Uses:	IHC - Paraffin (1.25 µg/ml) (Optimal dilution to be determined by the researcher)
Size:	50 µg
Concentration:	1 mg/ml

Immunohistochemistry Image:



Anti-CD26 antibody LS-A8060 IHC of human placenta. Immunohistochemistry of formalin-fixed, paraffin-embedded tissue after heat-induced antigen retrieval.

Requested From:

Japan

Laboratory Reagent For In Vitro Research Use Only

Not for resale without prior written consent from LifeSpan BioSciences, Inc.

Created on 9/23/2014

© 2014 LifeSpan BioSciences