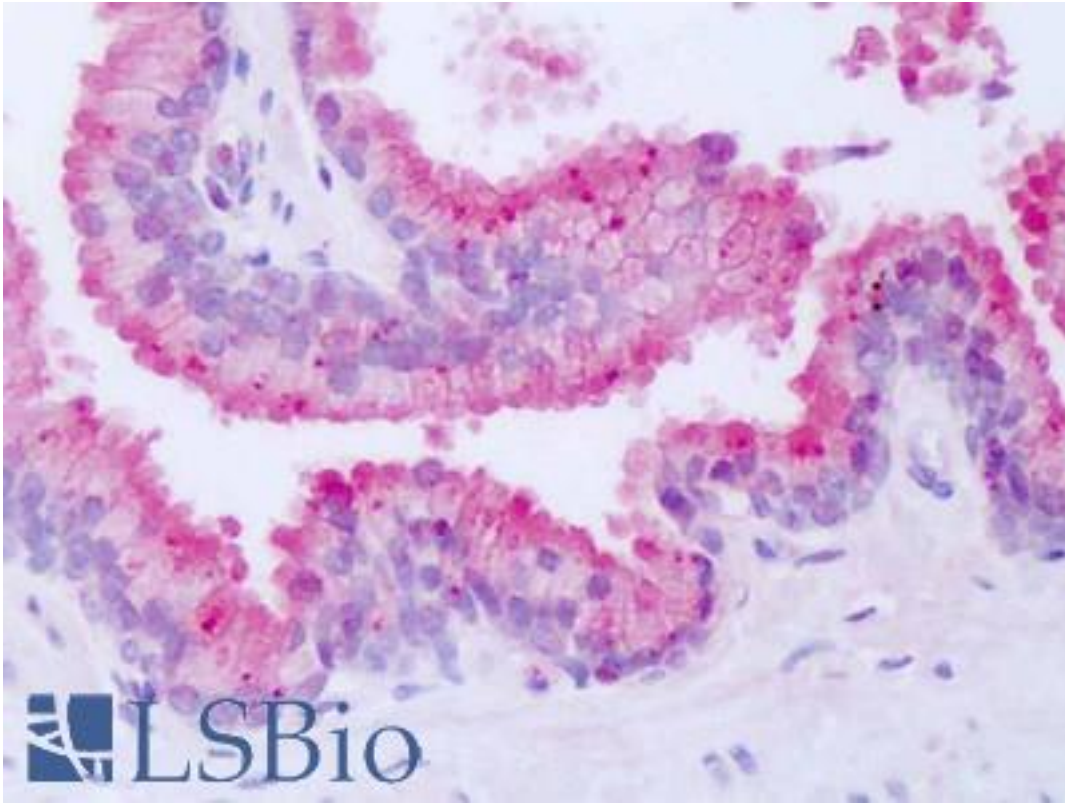


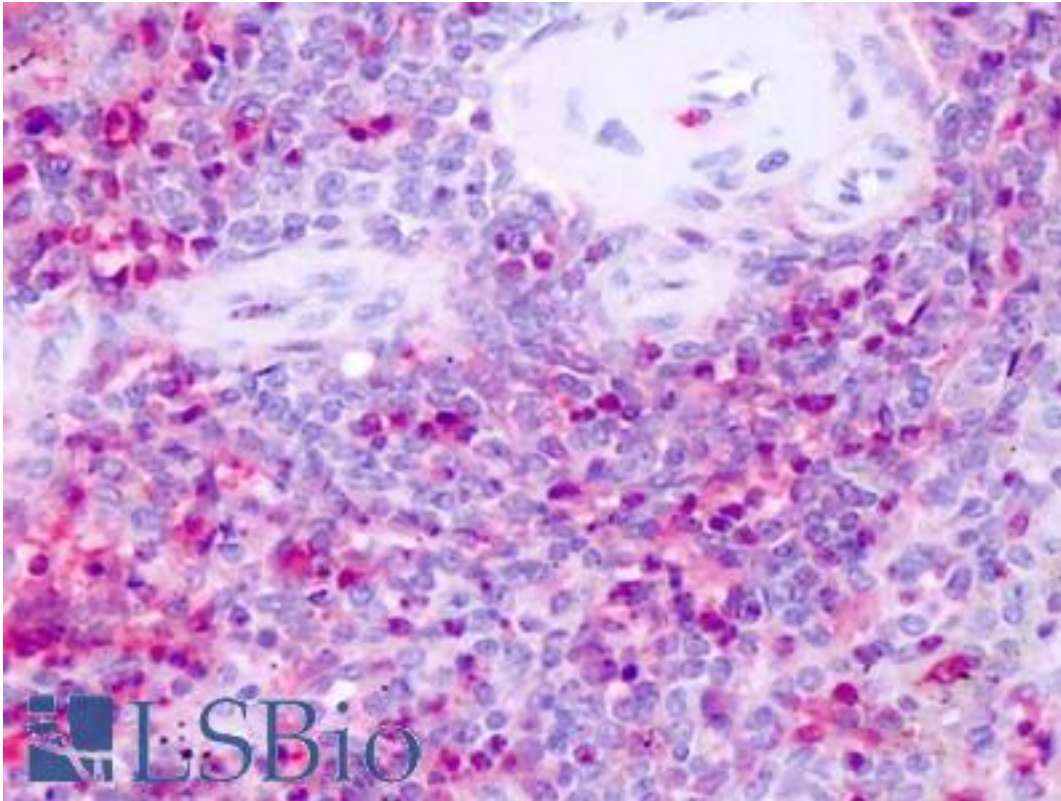
NR1D1 Rabbit anti-Human Polyclonal (Internal) Antibody - LS-A8044 - LSBio	
CatalogID:	LS-A8044
Target:	nuclear receptor subfamily 1, group D, member 1 (NR1D1)
Synonyms:	NR1D1 Antibody, EAR1 Antibody, Rev-erbA-alpha Antibody, Reverba Antibody, Reverbaalpha Antibody, Rev-erb alpha Antibody, Rev-erba Antibody, Rev-erbalphal Antibody, RevErbAlpha Antibody, THRA1 Antibody, Rev-ErbAlpha Antibody, Ear-1 Antibody, HRev Antibody, THRAL Antibody, V-erbA-related protein 1 Antibody
Family / Subfamily:	NHR / NR1 Thyroid hormone-like
Host	NR1D1 antibody was produced in Rabbit
Clonality:	Polyclonal
Immunogen Species:	NR1D1 antibody was raised against Human
Antigen Type:	Synthetic peptide
Immunogen:	NR1D1 antibody was raised against synthetic 17 amino acid peptide from internal region of human NR1D1. Percent identity with other species by BLAST analysis: Human, Gorilla, Gibbon, Marmoset, Mouse, Rat, Hamster, Elephant, Panda, Dog, Bovine, Horse, Rabbit, Pig (100%); Bat, Opossum, Lizard (94%).
Specificity:	Human NR1D1. BLAST analysis of the peptide immunogen showed no homology with other human proteins, except NR1D2 (59%).
Epitope:	Internal
Reactivity:	Human, Gorilla, Gibbon, Monkey, Mouse, Rat, Bovine, Dog, Hamster, Horse, Pig, Rabbit
Predicted Reactivity:	Bat
Purification:	Immunoaffinity purified
Presentation:	PBS, 0.1% sodium azide.
Recommended Storage:	Long term: -70°C; Short term: +4°C
Uses:	IHC - Paraffin (4 µg/ml) (Optimal dilution to be determined by the researcher)
Size:	50 µg
Concentration:	1 mg/ml

Immunohistochemistry Image:



Anti-NR1D1 antibody IHC of human prostate. Immunohistochemistry of formalin-fixed, paraffin-embedded tissue after heat-induced antigen retrieval. Antibody LS-A8044 dilution 4 ug/ml.

Immunohistochemistry Image:



Anti-NR1D1 antibody IHC of human spleen. Immunohistochemistry of formalin-fixed, paraffin-embedded tissue after heat-induced antigen retrieval. Antibody LS-A8044 dilution 4 ug/ml.

Requested From:

Japan

Laboratory Reagent For In Vitro Research Use Only

Not for resale without prior written consent from LifeSpan BioSciences, Inc.

Created on 9/23/2014

© 2014 LifeSpan BioSciences