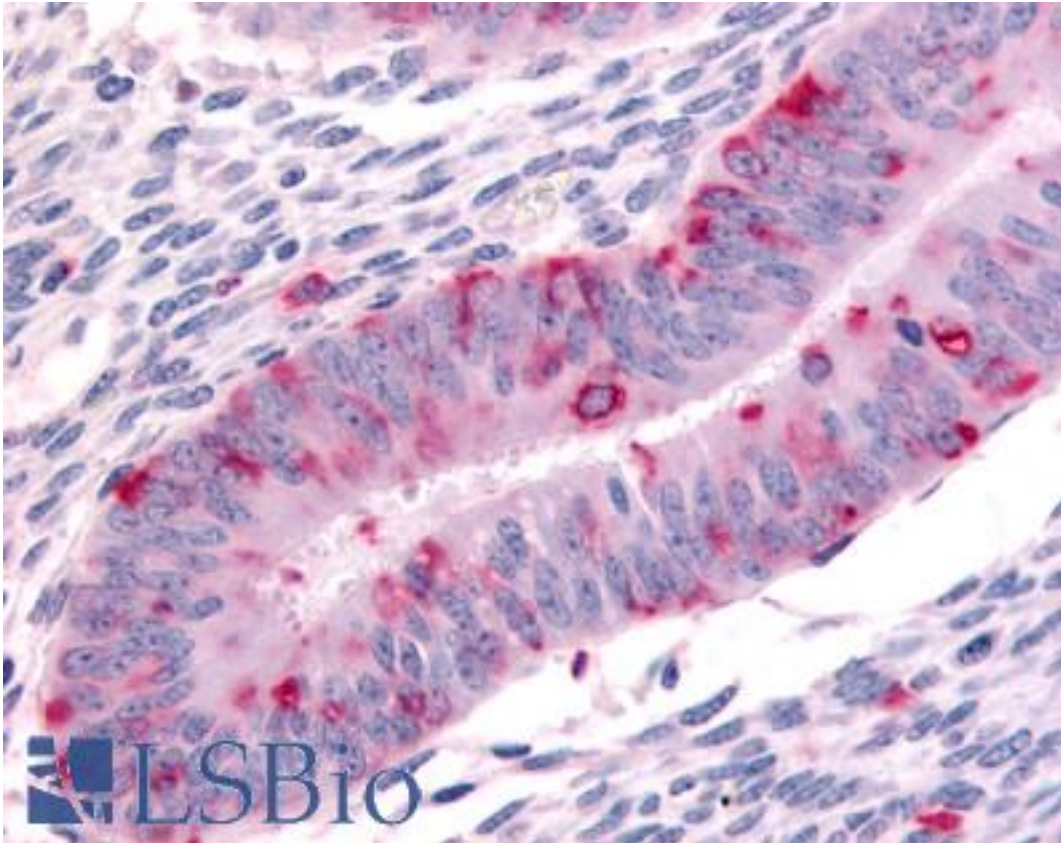


Dipeptidylpeptidase 8 / DPP8 Rabbit anti-Human Polyclonal (N-Terminus) Antibody - LS-A8035 - LSBio

<b>CatalogID:</b>	LS-A8035
<b>Target:</b>	dipeptidyl-peptidase 8 (DPP8)
<b>Synonyms:</b>	DPP8 Antibody, Dipeptidyl-peptidase 8 Antibody, DPRP1 Antibody, Dipeptidyl peptidase VIII Antibody, Dipeptidylpeptidase 8 Antibody, DPRP-1 Antibody, Dipeptidyl peptidase 8 Antibody, MSTP141 Antibody, Prolyl dipeptidase DPP8 Antibody, DP8 Antibody, DPP VIII Antibody
<b>Family / Subfamily:</b>	Protease / Serine S9B
<b>Host</b>	DPP8 antibody was produced in Rabbit
<b>Clonality:</b>	Polyclonal
<b>Immunogen Species:</b>	Dipeptidylpeptidase 8 / DPP8 antibody was raised against Human
<b>Immunogen:</b>	Dipeptidylpeptidase 8 / DPP8 antibody was raised against synthetic 16 amino acid peptide from N-terminus of human DPP8 (NP_569118.1). Percent identity with other species by BLAST analysis: Human, Gorilla, Gibbon, Monkey, Marmoset, Dog, Bovine, Bat, Panda, Horse, Rabbit, Pig (100%); Mouse, Rat, Elephant, Opossum (94%); Turkey, Chicken (81%).
<b>Specificity:</b>	Human DPP8. BLAST analysis of the peptide immunogen showed no homology with other human proteins, except DPP9 (56%).
<b>Epitope:</b>	N-Terminus
<b>Reactivity:</b>	Human, Gorilla, Gibbon, Monkey, Bat, Bovine, Dog, Horse, Pig, Rabbit
<b>Predicted Reactivity:</b>	Mouse, Rat
<b>Purification:</b>	Immunoaffinity purified
<b>Presentation:</b>	PBS, 0.1% sodium azide.
<b>Recommended Storage:</b>	Long term: -70°C; Short term: +4°C
<b>Usage Summary:</b>	Immunohistochemistry: LS-A8035 was validated for use in immunohistochemistry on a panel of 21 formalin-fixed, paraffin-embedded (FFPE) human tissues after heat induced antigen retrieval in pH 6.0 citrate buffer. After incubation with the primary antibody, slides were incubated with biotinylated secondary antibody, followed by alkaline phosphatase-streptavidin and chromogen. The stained slides were evaluated by a pathologist to confirm staining specificity. The optimal working concentration for LS-A8035 was determined to be 20 ug/ml.
<b>Uses:</b>	IHC - Paraffin (20 µg/ml) (Optimal dilution to be determined by the researcher)
<b>Size:</b>	50 µg
<b>Concentration:</b>	1 mg/ml

**Immunohistochemistry Image:**



Anti-DPP8 antibody LS-A8035 IHC of human uterus. Immunohistochemistry of formalin-fixed, paraffin-embedded tissue after heat-induced antigen retrieval.

**Requested From:**

Japan

Laboratory Reagent For In Vitro Research Use Only

Not for resale without prior written consent from LifeSpan BioSciences, Inc.

Created on 9/23/2014

© 2014 LifeSpan BioSciences