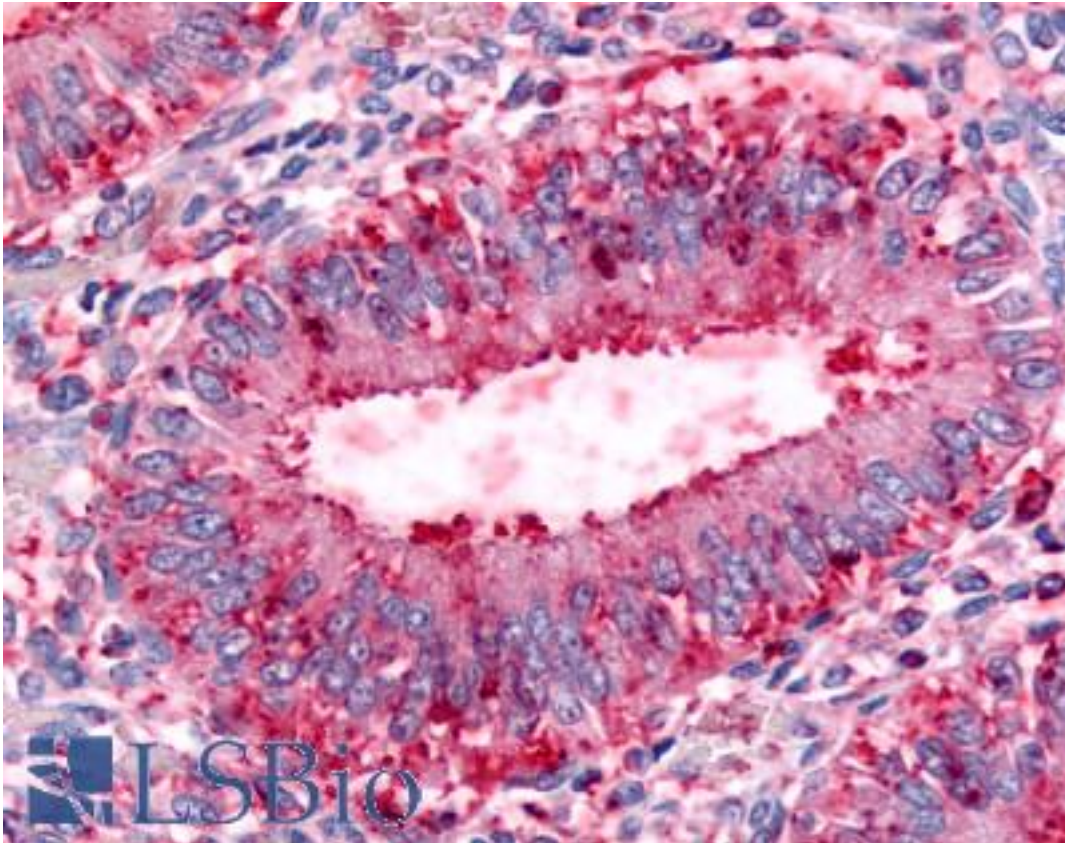


Dipeptidylpeptidase 8 / DPP8 Rabbit anti-Human Polyclonal (Internal) Antibody - LS-A8034 - LSBio	
CatalogID:	LS-A8034
Target:	dipeptidyl-peptidase 8 (DPP8)
Synonyms:	DPP8 Antibody, Dipeptidyl-peptidase 8 Antibody, DPRP1 Antibody, Dipeptidyl peptidase VIII Antibody, Dipeptidylpeptidase 8 Antibody, DPRP-1 Antibody, Dipeptidyl peptidase 8 Antibody, MSTP141 Antibody, Prolyl dipeptidase DPP8 Antibody, DP8 Antibody, DPP VIII Antibody
Family / Subfamily:	Protease / Serine S9B
Host	DPP8 antibody was produced in Rabbit
Clonality:	Polyclonal
Immunogen Species:	Dipeptidylpeptidase 8 / DPP8 antibody was raised against Human
Immunogen:	Dipeptidylpeptidase 8 / DPP8 antibody was raised against synthetic 14 amino acid peptide from internal region of human DPP8 (NP_569118.1). Percent identity with other species by BLAST analysis: Human, Gorilla, Monkey, Marmoset (100%); Mouse, Elephant, Panda, Dog, Bovine, Bat, Horse, Rabbit, Opossum (93%); Rat, Pig (86%).
Specificity:	Human DPP8. BLAST analysis of the peptide immunogen showed no homology with other human proteins.
Epitope:	Internal
Reactivity:	Human, Gorilla, Monkey
Predicted Reactivity:	Mouse, Bat, Bovine, Dog, Horse, Rabbit
Purification:	Immunoaffinity purified
Presentation:	PBS, 0.1% sodium azide.
Recommended Storage:	Long term: -70°C; Short term: +4°C
Uses:	IHC - Paraffin (5 µg/ml) (Optimal dilution to be determined by the researcher)
Size:	50 µg
Concentration:	1 mg/ml

Immunohistochemistry Image:



Anti-DPP8 antibody LS-A8034 IHC of human uterus, endometrial glands.
Immunohistochemistry of formalin-fixed, paraffin-embedded tissue after heat-induced antigen retrieval.

Requested From:

Japan

Laboratory Reagent For In Vitro Research Use Only

Not for resale without prior written consent from LifeSpan BioSciences, Inc.

Created on 9/23/2014

© 2014 LifeSpan BioSciences