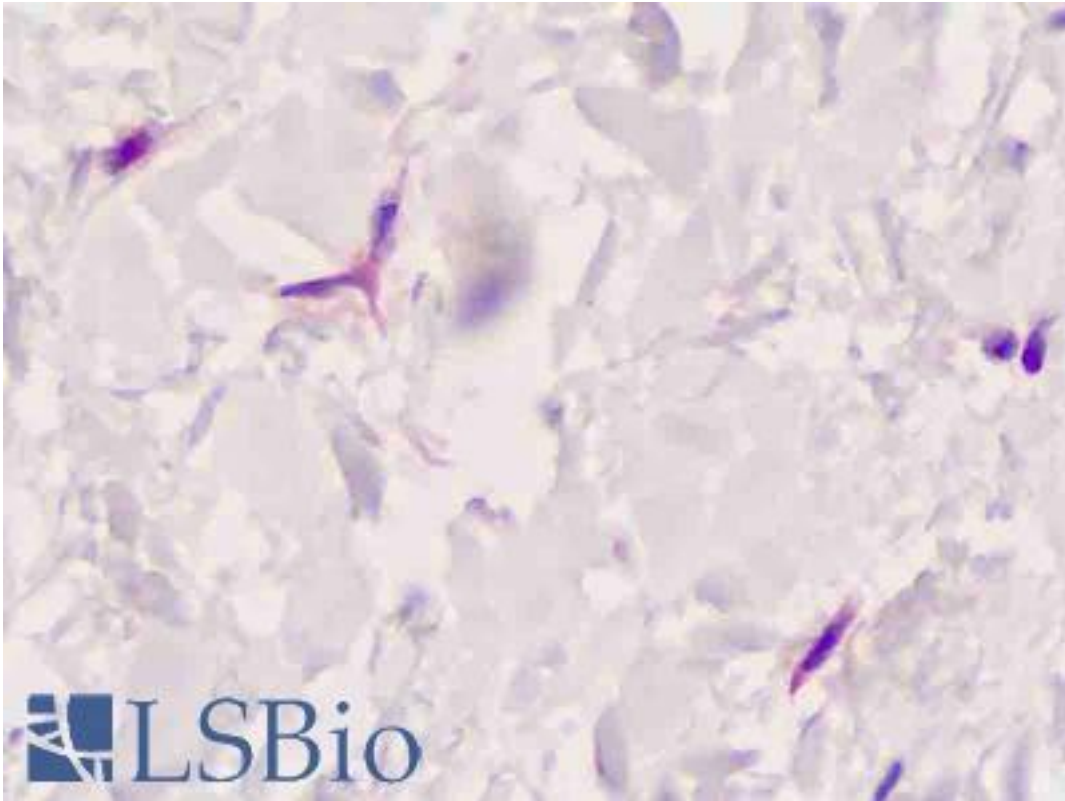


FAP Alpha Rabbit anti-Human Polyclonal (Extracellular Domain) Antibody - LS-A8027 - LSBio	
<b>CatalogID:</b>	LS-A8027
<b>Target:</b>	fibroblast activation protein, alpha (FAP)
<b>Synonyms:</b>	FAP Antibody, DPPIV Antibody, FAP alpha Antibody, Fibroblast activation protein Antibody, FAPA Antibody, Seprase Antibody
<b>Family / Subfamily:</b>	Protease / Serine S9
<b>Host</b>	FAP antibody was produced in Rabbit
<b>Clonality:</b>	Polyclonal
<b>Immunogen Species:</b>	FAP Alpha antibody was raised against Human
<b>Antigen Type:</b>	Synthetic peptide
<b>Immunogen:</b>	FAP Alpha antibody was raised against synthetic 17 amino acid peptide from extracellular domain of human FAP. Percent identity with other species by BLAST analysis: Human, Gorilla (100%); Gibbon, Monkey, Mouse, Rat, Bovine, Dog, Hamster, Elephant, Panda, Horse, Rabbit, Pig, Opossum (94%); Marmoset, Bat, Turkey, Chicken (88%).
<b>Specificity:</b>	Human FAP. BLAST analysis of the peptide immunogen showed no homology with other human proteins.
<b>Epitope:</b>	Extracellular Domain
<b>Reactivity:</b>	Human, Gorilla
<b>Predicted Reactivity:</b>	Gibbon, Monkey, Mouse, Rat, Bovine, Dog, Hamster, Horse, Pig, Rabbit
<b>Purification:</b>	Immunoaffinity purified
<b>Presentation:</b>	PBS, 0.1% sodium azide.
<b>Recommended Storage:</b>	Long term: -70°C; Short term: +4°C
<b>Usage Summary:</b>	Immunohistochemistry: LS-A8027 was validated for use in immunohistochemistry on a panel of 21 formalin-fixed, paraffin-embedded (FFPE) human tissues after heat induced antigen retrieval in pH 6.0 citrate buffer. After incubation with the primary antibody, slides were incubated with biotinylated secondary antibody, followed by alkaline phosphatase-streptavidin and chromogen. The stained slides were evaluated by a pathologist to confirm staining specificity. The optimal working concentration for LS-A8027 was determined to be 5 - 10 ug/ml.
<b>Uses:</b>	IHC - Paraffin (5 - 10 µg/ml) (Optimal dilution to be determined by the researcher)
<b>Size:</b>	50 µg
<b>Concentration:</b>	1 mg/ml

**Immunohistochemistry Image:**



Human Skin, Dermal Fibroblasts: Formalin-Fixed, Paraffin-Embedded (FFPE)

**Requested From:**

Japan

Laboratory Reagent For In Vitro Research Use Only

Not for resale without prior written consent from LifeSpan BioSciences, Inc.

Created on 9/23/2014

© 2014 LifeSpan BioSciences