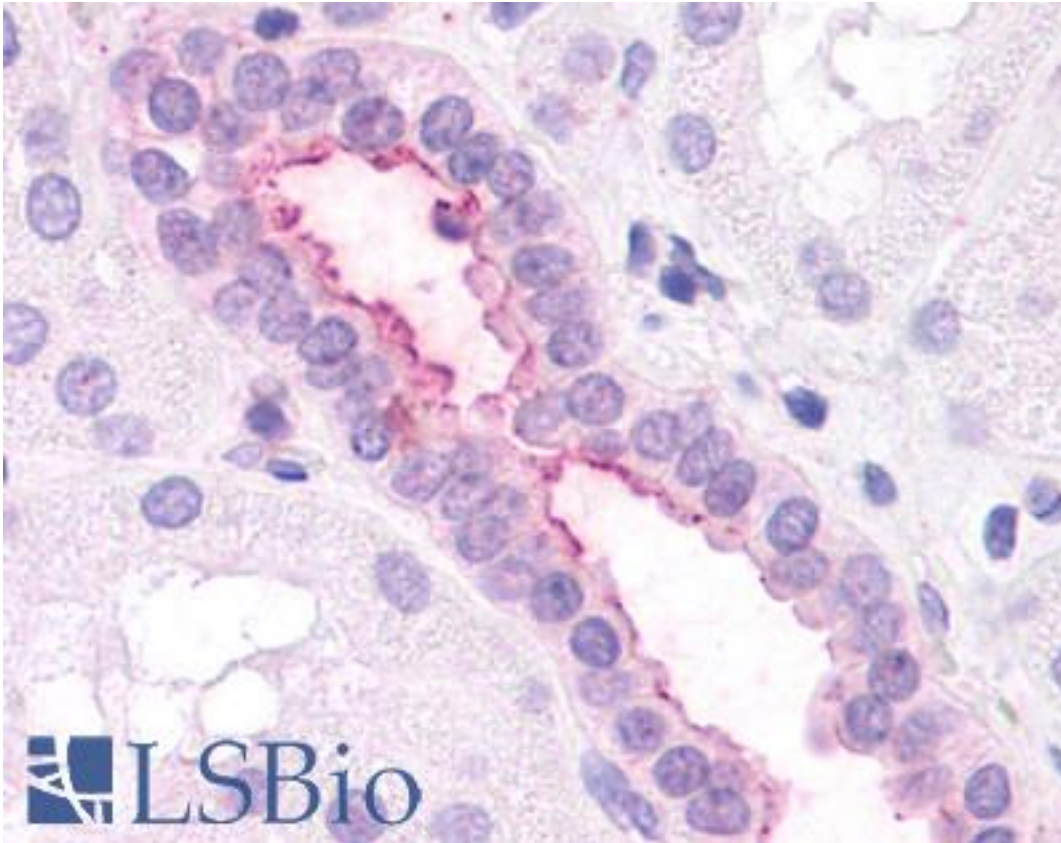


CXCR2 Rabbit anti-Human Polyclonal (N-Terminus) Antibody - LS-A802 - LSBio

CatalogID:	LS-A802
Target:	chemokine (C-X-C motif) receptor 2 (CXCR2)
Synonyms:	CXCR2 Antibody, CDw128b Antibody, CD182 antigen Antibody, CMKAR2 Antibody, CXCR-2 Antibody, CD182 Antibody, CXC-R2 Antibody, IL-8R B Antibody, IL-8 receptor b Antibody, IL-8 receptor type 2 Antibody, IL-8rb Antibody, IL8R2 Antibody, IL8RB Antibody, Interleukin-8 receptor type B Antibody, GRO/MGSA receptor Antibody, Interleukin 8 receptor beta Antibody, Interleukin 8 receptor, beta Antibody, Chemokine (CXC) receptor 2 Antibody, IL8RA Antibody, Interleukin 8 receptor B Antibody, Interleukin 8 receptor type 2 Antibody
Family / Subfamily:	GPCR / Chemokine
Host	CXCR2 antibody was produced in Rabbit
Clonality:	Polyclonal
Immunogen Species:	CXCR2 antibody was raised against Human
Antigen Type:	Synthetic peptide
Immunogen:	CXCR2 antibody was raised against synthetic 16 amino acid peptide from N-terminal extracellular domain of human CXCR2. Percent identity with other species by BLAST analysis: Human, Chimpanzee, Gorilla (100%); Monkey (88%).
Specificity:	Human CXCR2. BLAST analysis of the peptide immunogen showed no homology with other human proteins, except EYA3 (50%).
Epitope:	N-Terminus
Reactivity:	Human, Chimpanzee, Gorilla
Purification:	Immunoaffinity purified
Presentation:	PBS, 0.1% sodium azide.
Recommended Storage:	Long term: -70°C; Short term: +4°C
Uses:	IHC - Paraffin (7 µg/ml) (Optimal dilution to be determined by the researcher)
Size:	50 µg
Concentration:	1 mg/ml

Immunohistochemistry Image:



Anti-CXCR2 antibody LS-A802 IHC of human kidney. Immunohistochemistry of formalin-fixed, paraffin-embedded tissue after heat-induced antigen retrieval.

Requested From:

Japan

Laboratory Reagent For In Vitro Research Use Only

Not for resale without prior written consent from LifeSpan BioSciences, Inc.

Created on 9/23/2014

© 2014 LifeSpan BioSciences