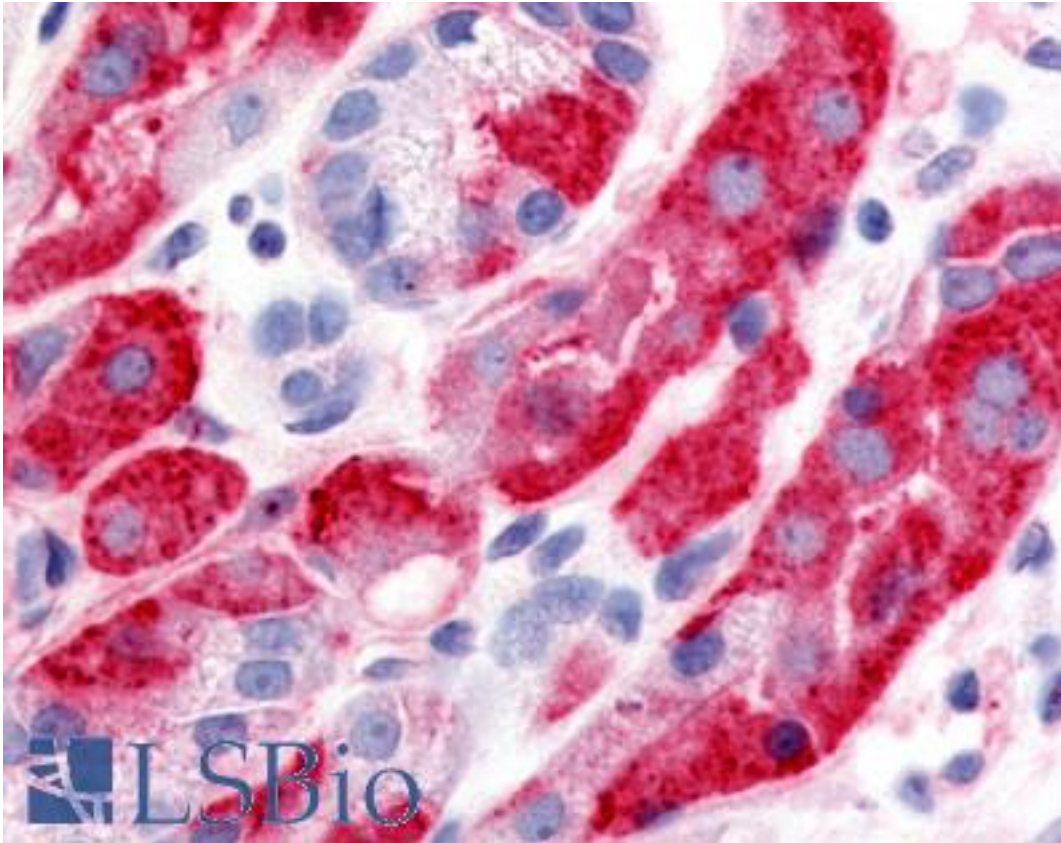


DPP2 / DPP7 Rabbit anti-Human Polyclonal (Extracellular Domain) Antibody - LS-A8018 - LSBio	
CatalogID:	LS-A8018
Target:	dipeptidyl-peptidase 7 (DPP7)
Synonyms:	DPP7 Antibody, Carboxytripeptidase Antibody, Dipeptidyl aminopeptidase II Antibody, Dipeptidyl peptidase 2 Antibody, DPPII Antibody, Dipeptidyl arylamidase II Antibody, Dipeptidyl-peptidase 7 Antibody, Dipeptidyl-peptidase II Antibody, Dipeptidylpeptidase 7 Antibody, Dipeptidyl peptidase 7 Antibody, Dipeptidyl peptidase II Antibody, DPP II Antibody, DPP2 Antibody, QPP Antibody
Family / Subfamily:	Protease / Serine S28
Host	DPP7 antibody was produced in Rabbit
Clonality:	Polyclonal
Immunogen Species:	DPP2 / DPP7 antibody was raised against Human
Antigen Type:	Synthetic peptide
Immunogen:	DPP2 / DPP7 antibody was raised against synthetic 18 amino acid peptide from extracellular domain of human DPP7 / DPP2. Percent identity with other species by BLAST analysis: Human, Orangutan, Gibbon (100%); Gorilla, Monkey (94%).
Specificity:	Human DPP7 / DPP2. BLAST analysis of the peptide immunogen showed no homology with other human proteins.
Epitope:	Extracellular Domain
Reactivity:	Human, Orangutan, Gibbon
Predicted Reactivity:	Gorilla, Monkey
Purification:	Immunoaffinity purified
Presentation:	PBS, 0.1% sodium azide.
Recommended Storage:	Long term: -70°C; Short term: +4°C
Usage Summary:	Immunohistochemistry: LS-A8018 was validated for use in immunohistochemistry on a panel of 21 formalin-fixed, paraffin-embedded (FFPE) human tissues after heat induced antigen retrieval in pH 6.0 citrate buffer. After incubation with the primary antibody, slides were incubated with biotinylated secondary antibody, followed by alkaline phosphatase-streptavidin and chromogen. The stained slides were evaluated by a pathologist to confirm staining specificity. The optimal working concentration for LS-A8018 was determined to be 10 ug/ml.
Uses:	IHC - Paraffin (10 µg/ml) (Optimal dilution to be determined by the researcher)
Size:	50 µg
Concentration:	1 mg/ml

Immunohistochemistry Image:



Anti-DPP7 / DPP2 antibody LS-A8018 IHC of human stomach. Immunohistochemistry of formalin-fixed, paraffin-embedded tissue after heat-induced antigen retrieval.

Requested From:

Japan

Laboratory Reagent For In Vitro Research Use Only

Not for resale without prior written consent from LifeSpan BioSciences, Inc.

Created on 9/23/2014

© 2014 LifeSpan BioSciences