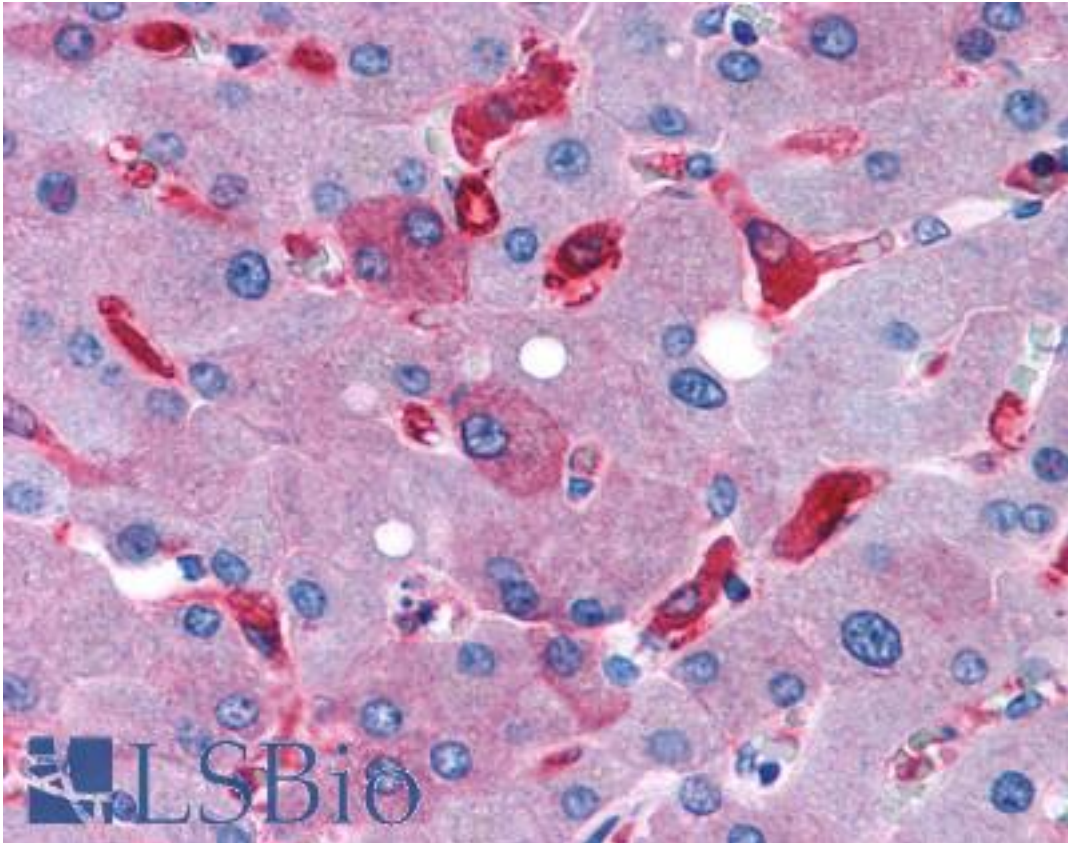


GPR128 Rabbit anti-Human Polyclonal (C-Terminus) Antibody - LS-A8008 - LSBio

CatalogID:	LS-A8008
Target:	G protein-coupled receptor 128 (GPR128)
Synonyms:	GPR128 Antibody, G protein-coupled receptor 128 Antibody
Family / Subfamily:	GPCR / Orphan-B
Host	GPR128 antibody was produced in Rabbit
Clonality:	Polyclonal
Immunogen Species:	GPR128 antibody was raised against Human
Antigen Type:	Synthetic peptide
Immunogen:	GPR128 antibody was raised against synthetic 20 amino acid peptide from C-terminus of human GPR128. Percent identity with other species by BLAST analysis: Human, Gorilla (100%); Gibbon, Marmoset (95%); Monkey (85%).
Specificity:	Human GPR128. BLAST analysis of the peptide immunogen showed no homology with other human proteins.
Epitope:	C-Terminus
Reactivity:	Human, Gorilla
Predicted Reactivity:	Gibbon, Monkey
Purification:	Immunoaffinity purified
Presentation:	PBS, 0.1% sodium azide.
Recommended Storage:	Long term: -70°C; Short term: +4°C
Uses:	IHC - Paraffin (6 µg/ml) (Optimal dilution to be determined by the researcher)
Size:	50 µg
Concentration:	1 mg/ml

Immunohistochemistry Image:



Anti-GPR128 antibody LS-A8008 IHC of human liver. Immunohistochemistry of formalin-fixed, paraffin-embedded tissue after heat-induced antigen retrieval.

Requested From:

Japan

Laboratory Reagent For In Vitro Research Use Only

Not for resale without prior written consent from LifeSpan BioSciences, Inc.

Created on 9/23/2014

© 2014 LifeSpan BioSciences